

A black and white artistic photograph featuring a dynamic water splash in the background. In the foreground, a dark, rectangular object, possibly a piece of equipment or a container, is partially submerged and covered in numerous water droplets. The lighting creates strong highlights on the water droplets and the splash, contrasting sharply with the dark background.

selux

P E E T A

Application Guide



Peeta - Lines of Light

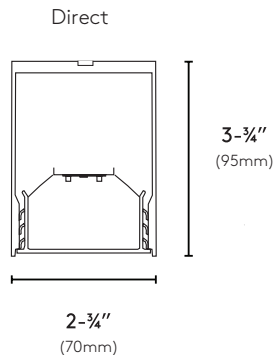
that endure the outside

Building on the Selux reputation for exceptional quality in linear fixtures, Peeta takes performance to the next level. This fully sealed luminaire achieves impressive IP65, IK10, and 3G ratings—raising the bar for durability and design. Engineered with a continuous tri-extruded

lens and mechanically sealed ends using discreet hardware, Peeta delivers strength, stability, and resilience for the most demanding applications.

Product Specifications

Series:	Peeta - Direct
Mounting:	Rigid Stem · Recessed · Wall · Surface · Vertical/Horizontal Surface · Catenary
Output:	330 - 1,534lm/ft · up to 115lm/W
CCT/CRI:	2700K · 3000K · 3500K · 4000K · 80+ or 90+ CRI
Shielding:	LED Optimized White Lens · LMO optics - 20° Wall Washer · 5° Wall Grazer · Narrow Beam · Batwing
Options:	Runs · Faux Wood Finish · Integral Cold Weather Emergency Battery Pack · Emergency Circuit Wiring · Joiners and unlit Corner Hubs · 3G Rating · BABAA Compliance



Why Peeta?

Interior or Exterior Luminaire

Tested for the Elements

Fully Sealed up to 12ft

Configurable

Emergency Lighting

Ease of Joiners

Declare Label

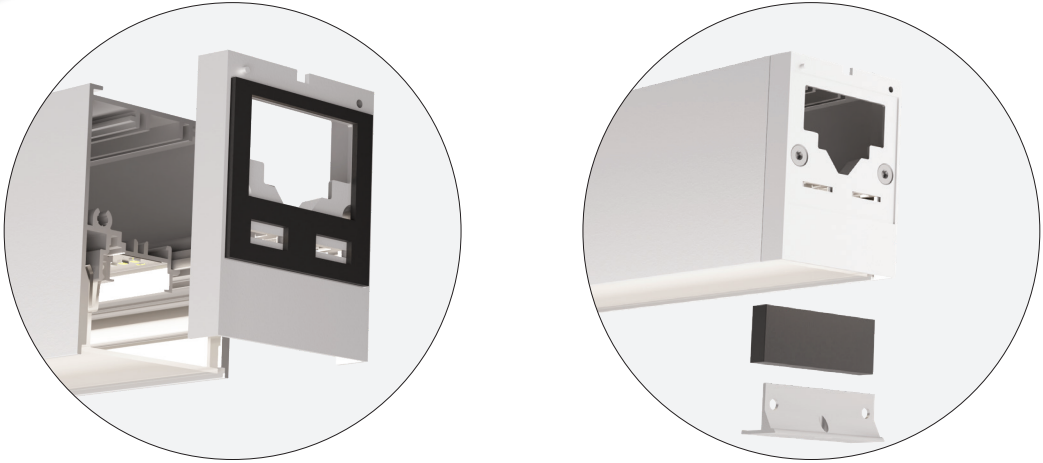
Variety of Finishes



**Peeta is a versatile light suitable for many
indoor and outdoor uses.**

It offers protected lighting for bathrooms, entrances,
canopies, and courtyards.

Construction



The aluminum endcap and connecting endcap incorporate a gasket, sealing block, and pressure plate to establish an enhanced watertight seal.

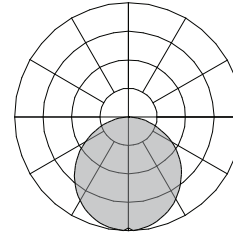
Up to 1,534lm/ft

Powerful, purposeful,
protected light

Up to 115lm/W

Efficient, comfortable
distributions for a
variety of applications

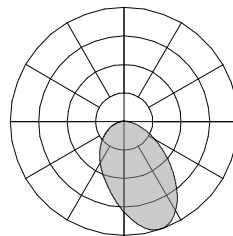
Distributions



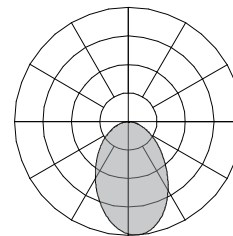
LW - LED Optimized White Lens
Application: general illumination

Light Modulation Optics (LMO)

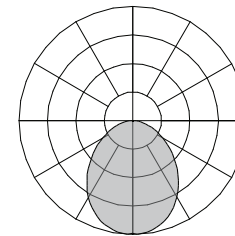
Our proprietary extruded LMO optics behind a tri-extruded lightly diffuse lens create an optical offering for any space



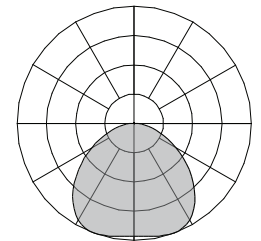
**A2 - LMO Asymmetric
20° Wall Washer**
Application: wall washing



**A5 - LMO Asymmetric
5° Wall Grazer**
Application: wall grazing



NB - LMO Symmetric
Application: general
illumination



BW - LMO Batwing
Application: general
illumination, wide spacing

Proprietary LED optical system allows for impressionable lighting design



A2 - LMO Asymmetric 20° Wall Washer (Wall Washing)

Illuminate building exteriors in radiant light, highlight structural components, or draw attention to unique characteristics through uniform brightness with our robust Wall Washer illumination technology, perfectly engineered for challenging outdoor conditions.



LW - LED Optimized White Lens (General Lighting)

This lens is ideal for general illumination, making it excellent for pathways, business environments, and architectural exteriors where linear lighting solutions are typically employed, particularly in challenging conditions.

Certifications and Listings

BA / BAA / BABAA Compliance

- designed with locally made components and materials, suited for government projects or when in need of a local product.



Declare - Selux proudly showcases product material transparency for the Peeta collection, which has earned Red List Approval. This certification demonstrates our thorough commitment to the development process.



3G - made to withstand vibrations typically found in transportation applications, Selux Peeta passed the stress test conducted in accordance with the ANSI C136.31-2010.



IP65 - Peeta is a dust and water tight luminaire, and is protected against waterjets in accordance with IEC 60598-1 (IEC 60529).

IP65

IK10 - The IEC 62262 specifies how to test luminaires for the protection against external mechanical impacts, and Peeta meets those requirements.

IK10

Facade Lighting

Used to create a welcome feel and to define precise architectural lines of commercial buildings, Peeta can be used on a facade without the worry of long-term performance.



Interior Spaces **exposed** to water and humidity

Peeta is fully sealed and IP65 rated, and uses tamper-resistant hardware. It's perfect for quality lighting for indoor or outdoor spaces that are exposed to moisture, water, humidity, and other stressors.







Catenary Spaces

There are a variety of times when a catenary installation is the best solution - high foot traffic areas, spaces needing minimal pole interruption, decorative/celebratory areas, courtyards, walkways - just to name a few.

Peeta, our first linear catenary fixture, joins the growing Selux catenary family, allowing you full choice and design control over your project. Whether installed individually or daisy-chained, Peeta delivers precisely the amount of warm, inviting light your space needs.

WHAT'S INCLUDED

Low-profile mounting keeps the fixture near the catenary cable, and adjustable turnbuckles allow for precise height adjustments.

Stainless Steel Structural Tension Cable provides strength and stiffness for static structures, with larger diameters as spans and loads increase.

Selux offers **mounting points for poles** or anchored brackets, with appropriate sizes calculated for each project. On-site PE must evaluate brackets to the structure.

Selux can provide **Professional Engineering stamped drawings** for a fee. This option should be identified early in the project, so that costs and extended lead times can be accounted for in the planning.

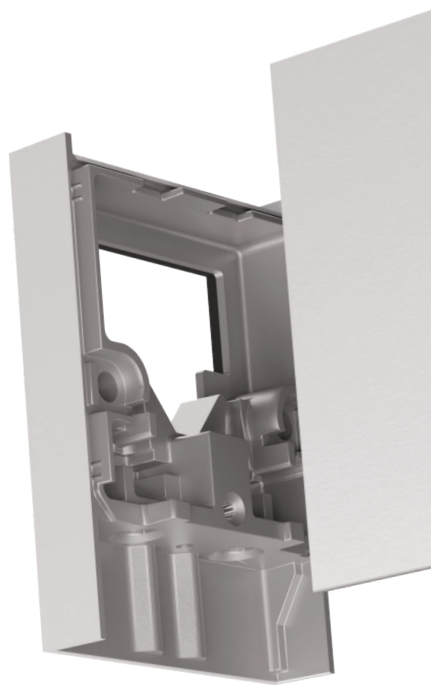
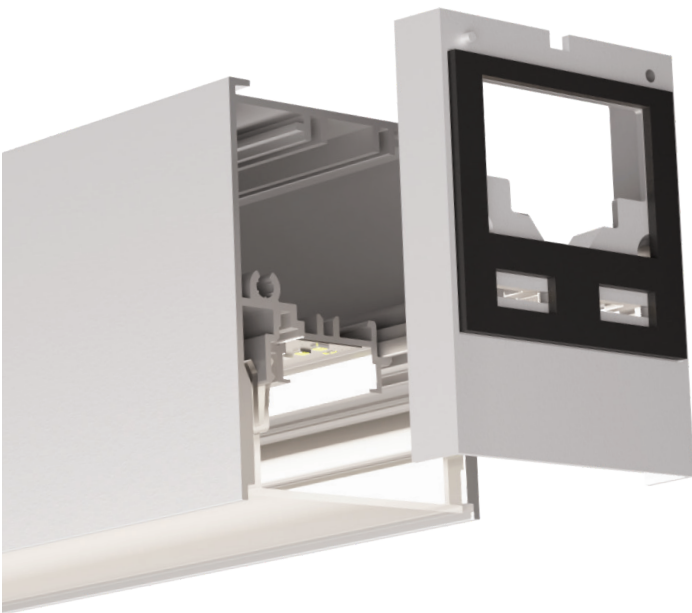
Transportation Projects

Travelers want to feel safe when on the move, and quality lighting is one way to help. Parking lots, train stations, subway terminals, and other areas where people gather or pass through while on their way, can often be treated as an afterthought when planning lighting. Bring these areas into focus and make them feel safe with Peeta - designed to withstand challenging areas.

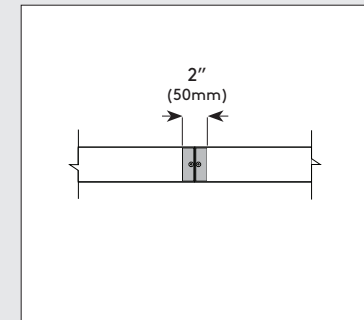


Easy to join and create patterns

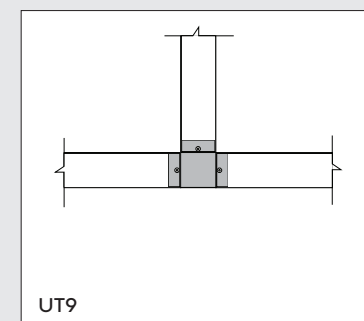
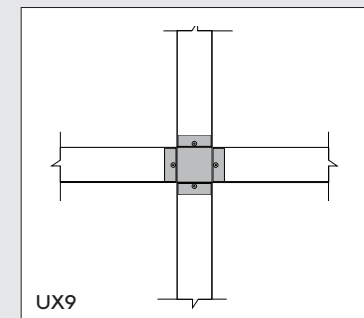
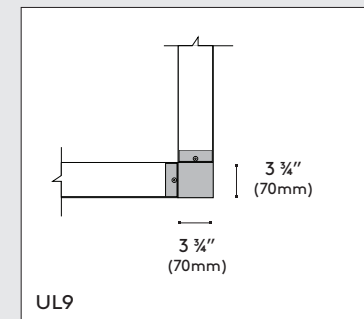
When your vision calls for extended runs or creative lighting patterns, Peeta delivers. Its precision-engineered joining system ensures easy installation, seamless alignment, and minimal interrupted illumination—while maintaining a fully sealed, high-performance design.

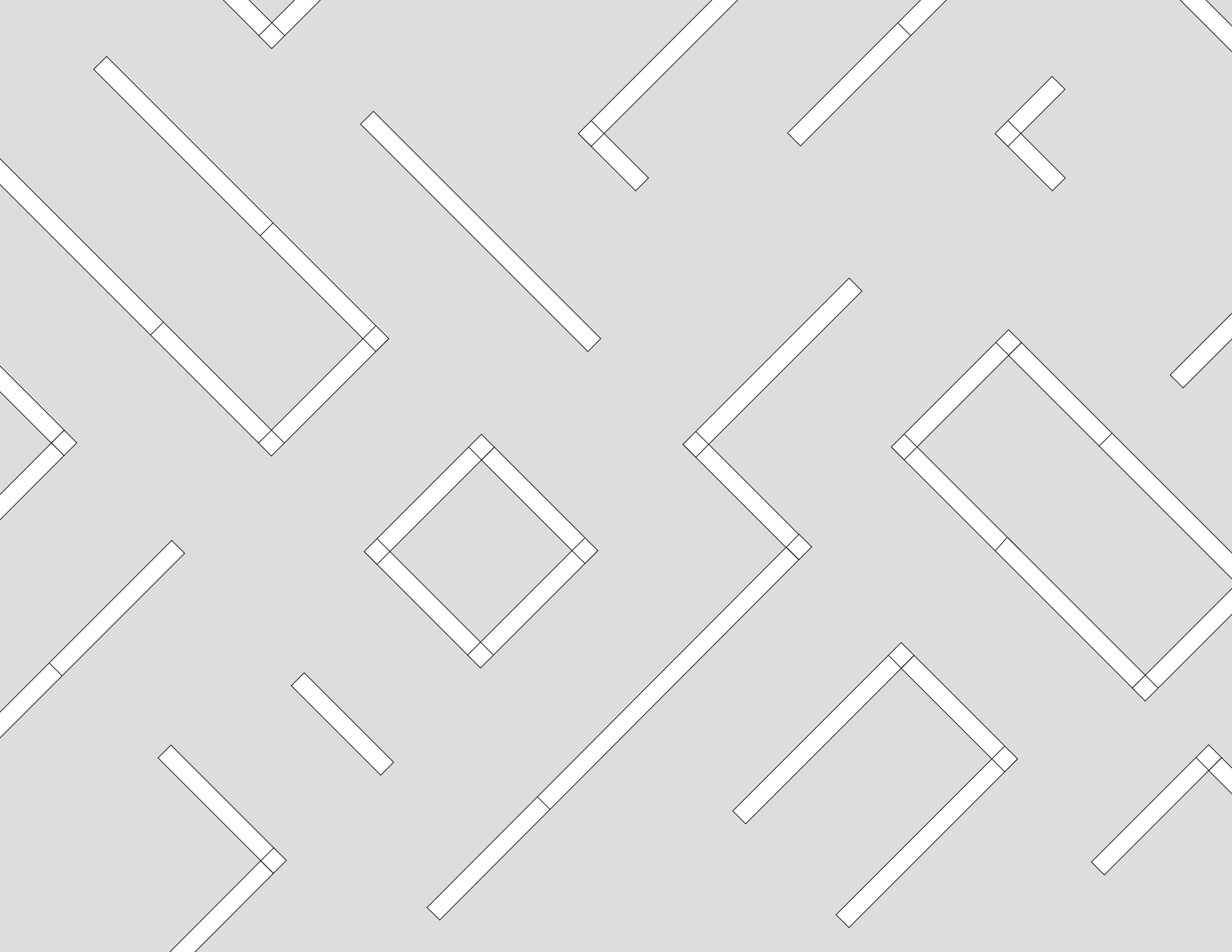


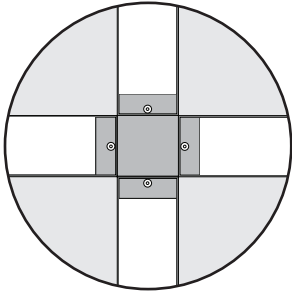
Straight Runs



Corners and Configurations

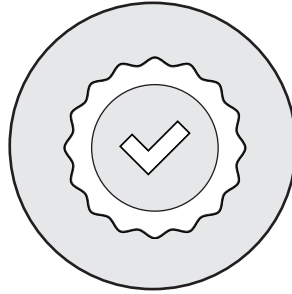






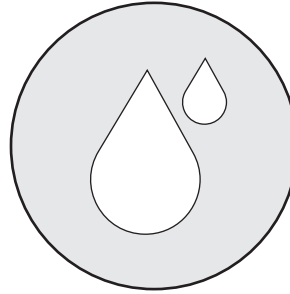
Ease of Joiners

Maintain the sealed luminaire while creating long runs or patterns with minimal interruption to the lines of light.



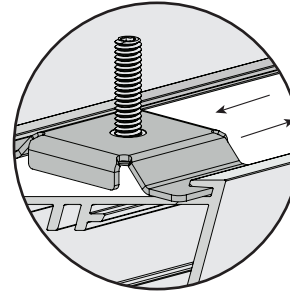
Tested for Endurance

Peeta has several listings and certifications - including BA / BAA / BABAA, Declare, IK10, IP65, 3G - all reinforcing the quality and durability you would expect.



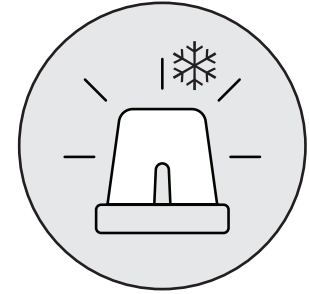
Fully Sealed up to 12'

Keeping water, dust, and insects out is important to help keep pure lines of light. The tri-extruded lens seals along the length, while the proprietary sealing endcaps keep the fixture enclosed at the ends and joints.



Adjustable Mounting Points

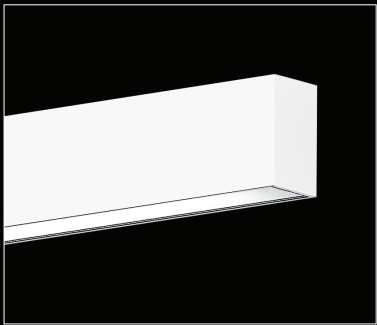
Allowing for movement of the mounting points creates an additional flexibility for Peeta - whether the building features have changed or you need to move mounting points for another reason, this fixture allows for on-site adjustability of mounting.



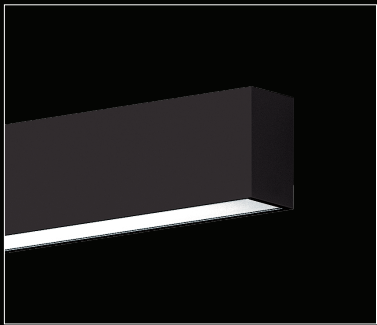
Emergency Lighting even in the cold

Selecting the best option for emergency lighting - emergency circuiting, integral cold weather emergency battery pack, or another custom solution - to provide your project with light even when the power goes out.

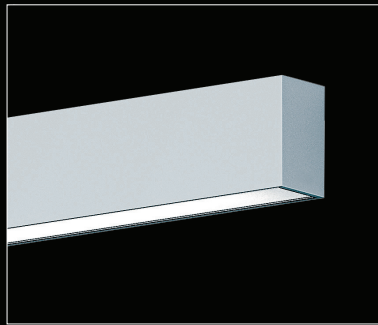
Selux Metal Finishes



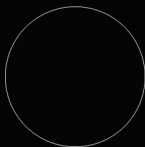
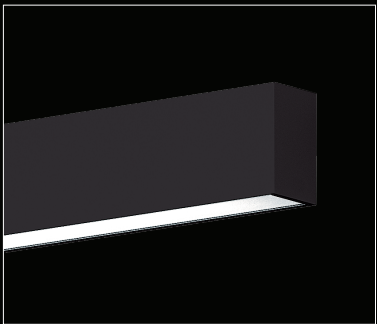
WH
white



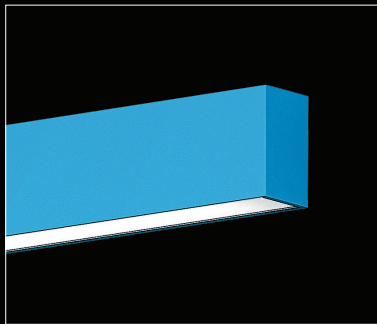
BK
black



SV
silver



BL
semi-matte
black

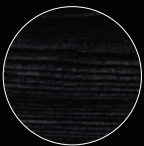


SP
custom
RAL finish

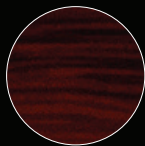
Selux Faux Wood Finishes



CC
cream cherry



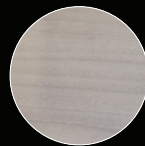
CR
charred
rosewood



RO
red olive



LC
light cherry



WA
weathered
walnut



Peeta

Declare label for our Indoor/Outdoor luminaire

Declare is a platform to share and find healthy building products. Manufacturers willingly disclose product information that can be found on the Declare labels. These labels are then accessible on a free and searchable database used by prominent designers, real estate owners and home owners, to specify products they know they can trust and that meet the requirements of leading green building standards, including Core Green Building, LBC, LEED, and WELL Certification.

Declare has positively changed the materials marketplace to enable the creation of buildings that support human and environmental health and has made it extremely easy to facilitate and simplify the exchange of information.

Selux is also proud to be Living Future Corporate Member. With this credential, Selux is recognized for its proficiency in the world's more ambitious, advanced, and holistic sustainable design standards.

Peeta provides full transparency to help specifiers quickly identify options that meet their project needs. Declare labels disclose all intentionally-added ingredients, empowering consumers to make all more informed purchasing decisions.



LIVING FUTURE
CORPORATE MEMBER



Peeta Selux Corporation

Final Assembly: Highland, New York, USA

Life Expectancy: 5+ Year(s)

End of Life Options: Recyclable (90%), Landfill (10%)

Ingredients:

Aluminum; LED Driver; Methyl methacrylate; LED PCB; Aluminum alloy, AlZn, dross; Stainless Steel; Stainless Steel; Copper alloy, base, Cu 90-91, Sn 9.2-10; 2,2-Bis(4-hydroxyphenyl)propane polycarbonate SRU; 4,7-Methano-1H-indene, 3a,4,7,7a-tetrahydro-, polymer with ethene and 1-propene; Steel; Siloxane and Silicone, C24-28-alkyl Me, di-Me (mittlere Molmasse ca. 2500 g/mol); Nylon 6

Living Building Challenge Criteria: Compliant

I-13 Red List:

■ LBC Red List Free % Disclosed: 100% at 100ppm
□ LBC Red List Approved VOC Content: Not Applicable
□ Declared

I-10 Interior Performance: Not Applicable

I-14 Responsible Sourcing: Not Applicable

SLX-0010
EXP. 01 APR 2026
Original Issue Date: 2025

MANUFACTURER RESPONSIBLE FOR LABEL ACCURACY
INTERNATIONAL LIVING FUTURE INSTITUTE™ living-future.org/declare

Publisher

Selux Corporation
5 Lumen Lane
Highland, NY 12528
www.selux.us

Edited by (responsible)

Selux Corporation

Concept and Design

Selux Corporation
www.selux.us

Print

Selux Corporation
5 Lumen Lane
Highland, NY 12528

Selux is a registered trademark of the Selux Corporation.

Errors accepted and subject to change due to technical modifications. For conditions of sale and delivery please refer to www.selux.us.

The use of the text and images, even in part, is in breach of copyright without the consent of the Selux Corporation and punishable. This also applies to copies, translations, microfilming and processing with electronic systems.

05/2025

