



M E L  
L I <sup>TM</sup>

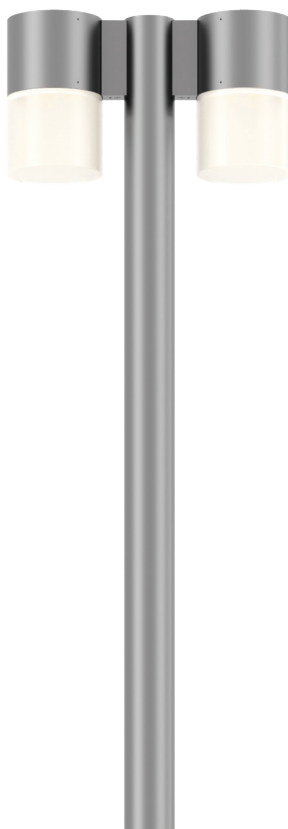
Application Guide

**selux**

Form

## Melli

A sophisticated luminaire range with endless optical and mounting options



GEN5



Typical Applications
Local Road
Pedestrian Path
Parking Lot
Dark Sky Area

DIFFUSE



Typical Applications
Plaza
Shopping Center
Pedestrian Path
Ambient Area

SPOT



Typical Applications
Facade
Accent
Pedestrian Path
Dark Sky Area

## A family of luminaires with tailored options

Melli is a medium scale architectural indoor/outdoor luminaire family that transforms for applications that require strict precise roadway lighting, soft diffuse light, or even focused spot distributions. With Melli, the same form factor is implemented throughout the entire family - mix and match optics with any of the various mounting types for an aesthetically cohesive design.

## Award Winning Product





Family



## Melli is available with three different light engines, each with their own options

### **Gen5**

Our proprietary Gen5 silicone optics provide a wide range of distributions for precise optical control and lower intensity angles. This optic is DarkSky approved at 3000K or warmer, and has the optional House Side Shield over each optic which enables shielding of the directional light. Choose from a short or long clear cylinder depending on the look you are going for.

### **Diffuse**

Behind a diffuse lens is a mid-power light engine, creating an even, comfortable appearance and light distribution. Enhance the ambiance of your space with soft illumination from either the short or long diffuse cylinder.

### **Spot/COB**

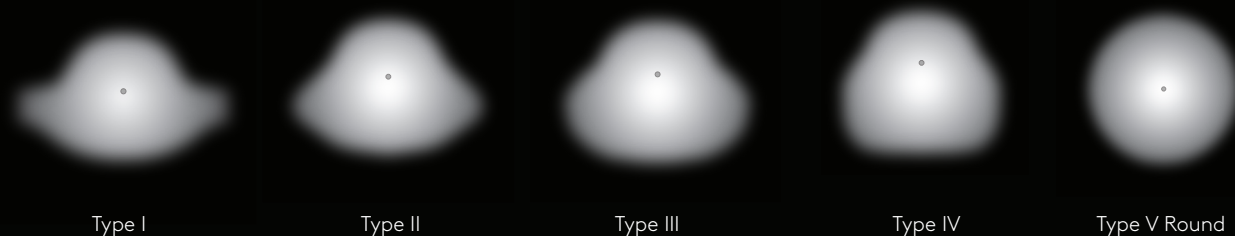
Add interest and drama to your lighting design with the Spot optics in Melli. The COB is seated behind one of four precise, specular reflectors, allowing different beams for different applications. Direct/Indirect for the Wall Mount can help create a visually interesting facade, or the Sistema mounting allows for aiming the light at specific areas or objects. When in the straight-down position, Melli Spot is DarkSky Approved in 3000K or warmer.

## Gen5 Specifications

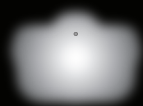
Light Engine:	Gen5
Distributions:	Type I · Type II · Type III · Type IV · Type V Round
Cylinder:	Short Clear · Long Clear
Output:	Up to 3,254lm · up to 116lm/W
CCT:	2700K · 3000K · 3500K · 4000K · 5000K 80CRI minimum
Mounting:	Surface · Wall · Catenary · Rigid Stem · Single Pole Mount · Double Pole Mount
Options:	House Side Shield



### Standard Gen5 Distributions:



### House Side Shield Distribution:



House Side Shield\*

\* Type I with house side shield shown - available with Type I, II, III, and IV.



DarkSky Approved

IP66

IK10

## Gen5

is an optical advancement

An optical advancement that allows for a full range of distributions with excellent visual comfort, Gen5 is a proprietary design made of silicone, integrated into Melli to expand distribution options, increase lumen output, and provide a visual experience unique to Selux.

By keeping the vertical maximum intensity angle below 69°, Gen5 optics minimize brightness at critical viewing angles, and spreads brightness between the LEDs, reducing contrast and increasing visual comfort.

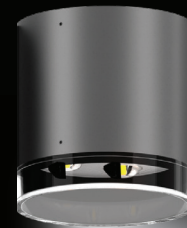


**Gen5**

## House Side Shield

blocks light at the source

Instead of the typical house side shield that obstructs the look of the luminaire as well as interrupting the flow of a lighting design, Selux has created an exclusive discrete house side shield that clips directly to the Gen5 optic, blocking light at the source. House side shield is only available with Type I, II, III, and IV.



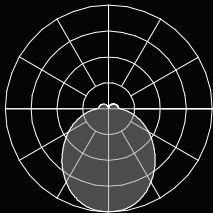
**Gen5  
with House-Side Shield**

Diffuse

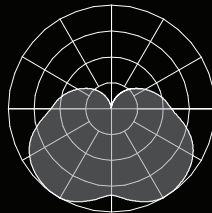
## Diffuse Specifications

<b>Light Engine:</b>	Diffuse
<b>Cylinder:</b>	Short Diffuse · Long Diffuse
<b>Output:</b>	Up to 4,703lm · up to 136lm/W
<b>CCT:</b>	2700K · 3000K · 3500K · 4000K · 5000K · 80CRI minimum
<b>Mounting:</b>	Surface · Wall · Catenary · Rigid Stem · Single Pole Mount · Double Pole Mount

Short Diffuse



Long Diffuse



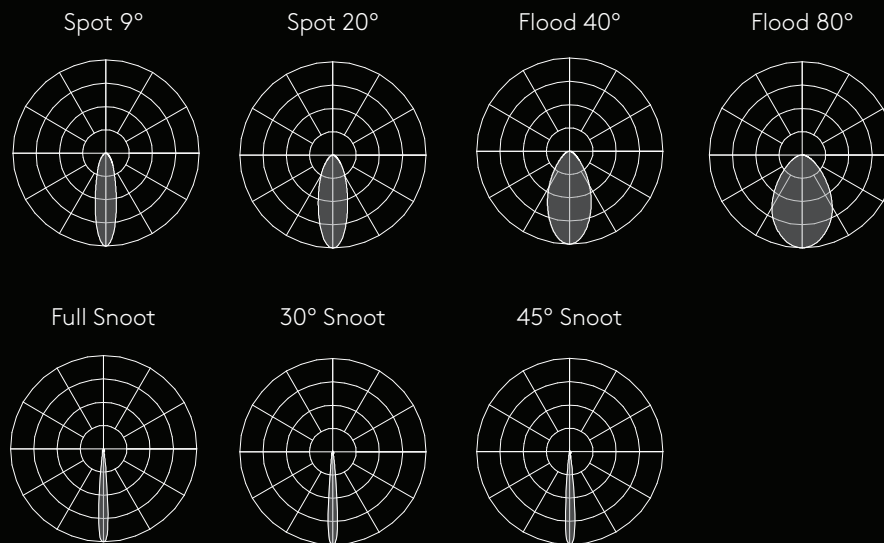
IP66

IK10

Spot

## Spot Specifications

Light Engine:	Spot
Optics:	Spot 9° · Spot 20° · Flood 40° · Flood 80°
Output:	Up to 3,840lm · Up to 92lm/W
CCT:	2700K · 3000K · 3500K · 4000K · 5000K 80CRI Minimum
Mounting:	Surface · Wall (Direct or Direct/Indirect) · Catenary · Rigid Stem · Single Pole Mount · Double Pole Mount · Sistema Pole Mount · Sistema Wall Mount
Options:	Honeycomb Louver · Spread Lens · Color Filter · Snoots - Full, 30°, 45° (Sistema only)

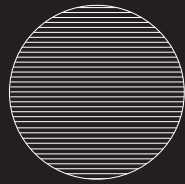


DarkSky Approved

IP66

IK07

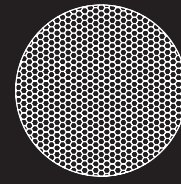
## Two lighting solutions designed to enhance Melli Spot



Linear Spread Lens



The Linear Spread Lens creates either a Horizontal or Vertical distribution of the light, and is field-rotatable, allowing for complete control over light manipulation.



Honeycomb Louver



The Honeycomb Louver reduces glare without adding length to the luminaire, while hiding the source of light through its sleek design.

## Melli Snoots

help enhance the level of  
control over your light

### FULL SNOOT



Provides beam control and  
reduces glare on the luminaire -  
tightens the beam and creates  
a crisp cutoff.

### 30° SNOOT



Ideal for a more ambient  
lighting, reduces glare from  
the luminaire and creates a  
feathered cutoff.

### 45° SNOOT

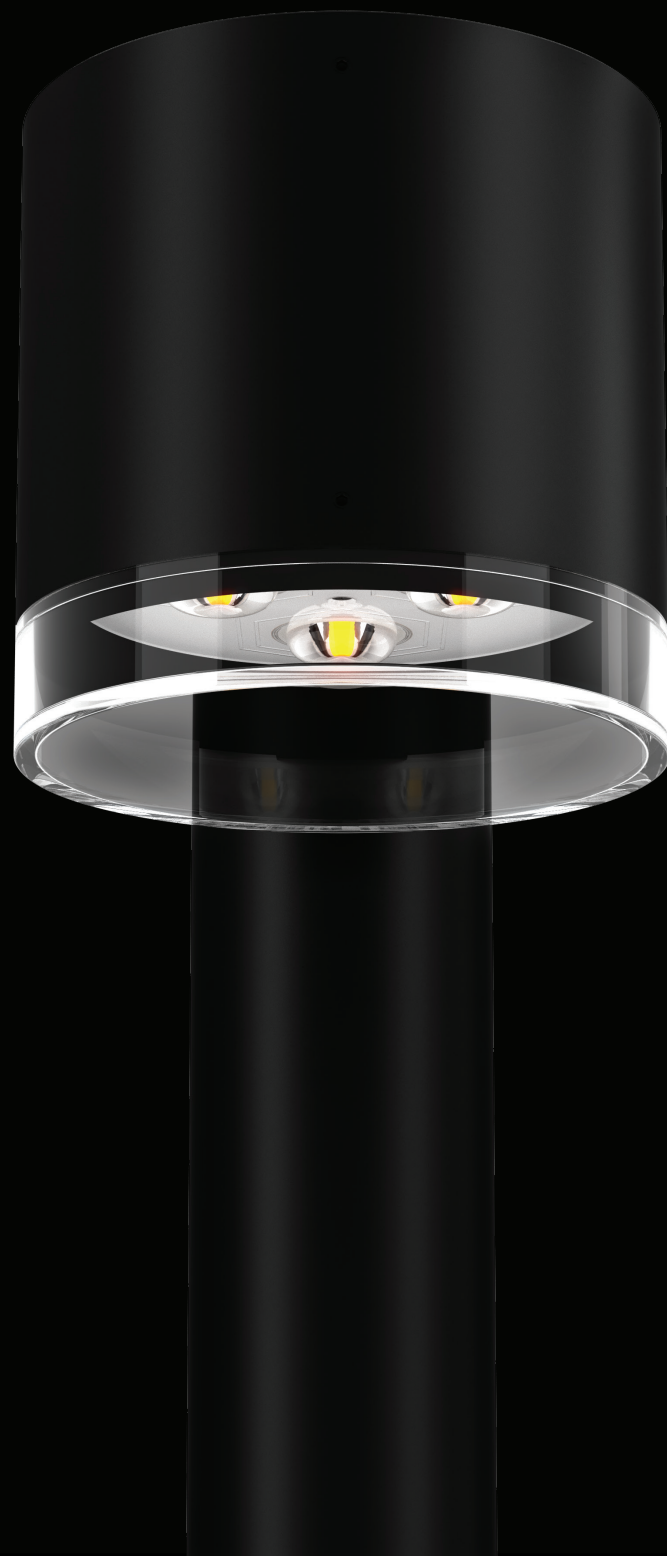


Also for ambient lighting,  
reduces glare from the luminaire  
more than the 30° and creates a  
feathered cutoff.





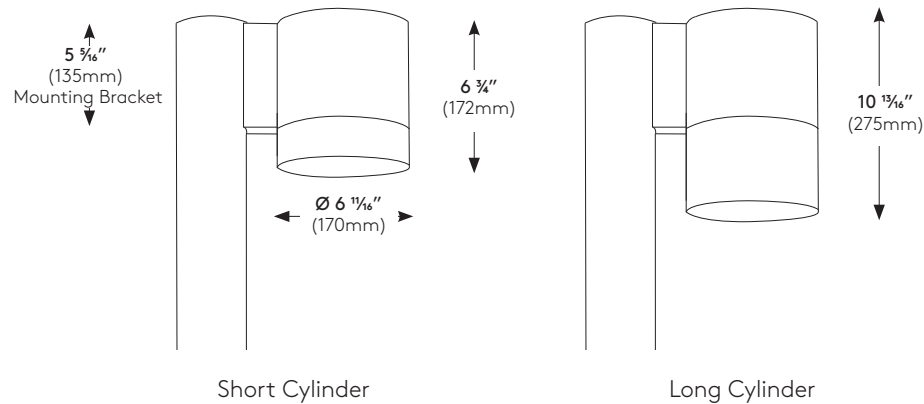
P O L E  
M O U N T



## Creative opportunities are abundant, with so many possible configurations

Melli attaches to round poles with a threaded insert - this method allows luminaires to be placed almost anywhere on a pole. Single or Double standard mounting allows you to double your light without doubling the number of poles needed.

On a project-specific basis, Melli could have two or more luminaires at different heights, which would allow for illuminating a road or parking area as well as a sidewalk from the other side of the same pole. This allows you to create even more unique lighting solutions without adding multiple poles.



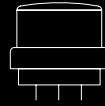






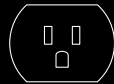
## Pole Options

(for use with Pole or Sistema Pole fixtures)



### Photocell

The twist-lock photocell conserves energy and improves safety and security by automatically turning lights on when it gets dark. It also saves on energy by turning off at dawn when extra light is unnecessary.



### GFCI

The outdoor GFCI duplex receptacle is intended for portable tools and equipment when attended by personnel. It is weatherproof with its self-closing cover - for use with or without padlock.



### USB & Duplex Receptacle

The outdoor GFCI receptacle with USB charging port is intended for portable tools and equipment when attended by personnel. The USB charging port allows convenient charging of smart phones or other low voltage electronics.

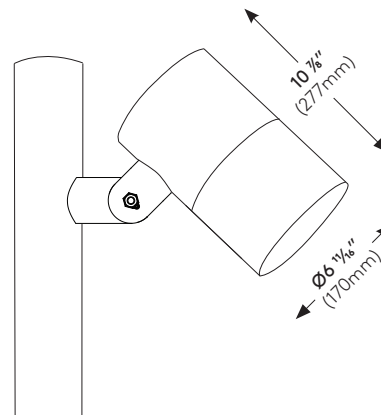
S I S T E M A  
M O U N T



## Customizing light direction and intensity

to enhance any  
setting's ambiance.

Melli Sistema has an adjustable mounting that allows for 360° and 90° tilt. Combining the rotation with the tilt provides +/- 90° range for precise orientation of the luminaire head, adding a great deal of creative freedom. Luminaire heads can be arranged single or staggered at various heights around a pole. With the options of a Full Snoot, 30° Snoot, 45° Snoot, and Honeycomb Louver, Melli Sistema offers a range of beam control and design opportunities.

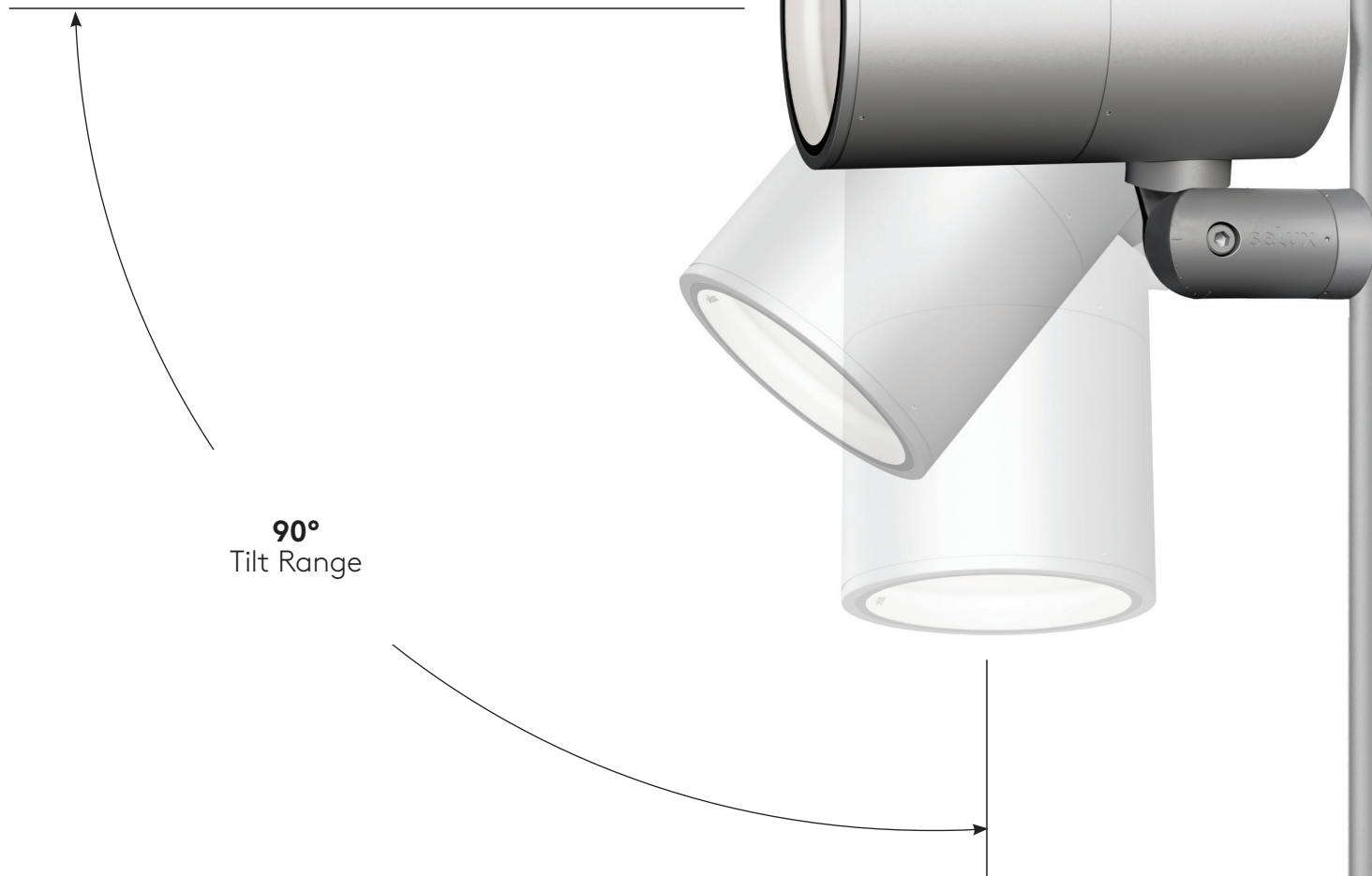


Sistema Pole

## TILT

Melli Sistema has an adjustable mounting that allows for 360° rotation and 90° tilt. Combining the rotation with the tilt provides +/- 90° range for precise orientation.

Embedded hash marks on the adjustable arm provide an easy visual for aiming and aligning fixtures.

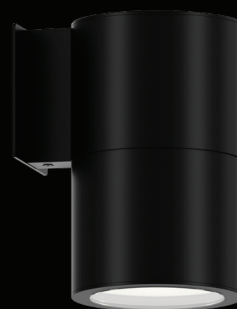








W A L L  
S U R F A C E  
S T E M  
S I S T E M A



## Emphasizing architectural detail

with an elegant, contemporary look

Melli Wall, Surface, Stem, and Sistema, luminaires are most commonly for use along building facades and overhangs to provide visual guidance for pathways, identify doorways, and brighten entrances.

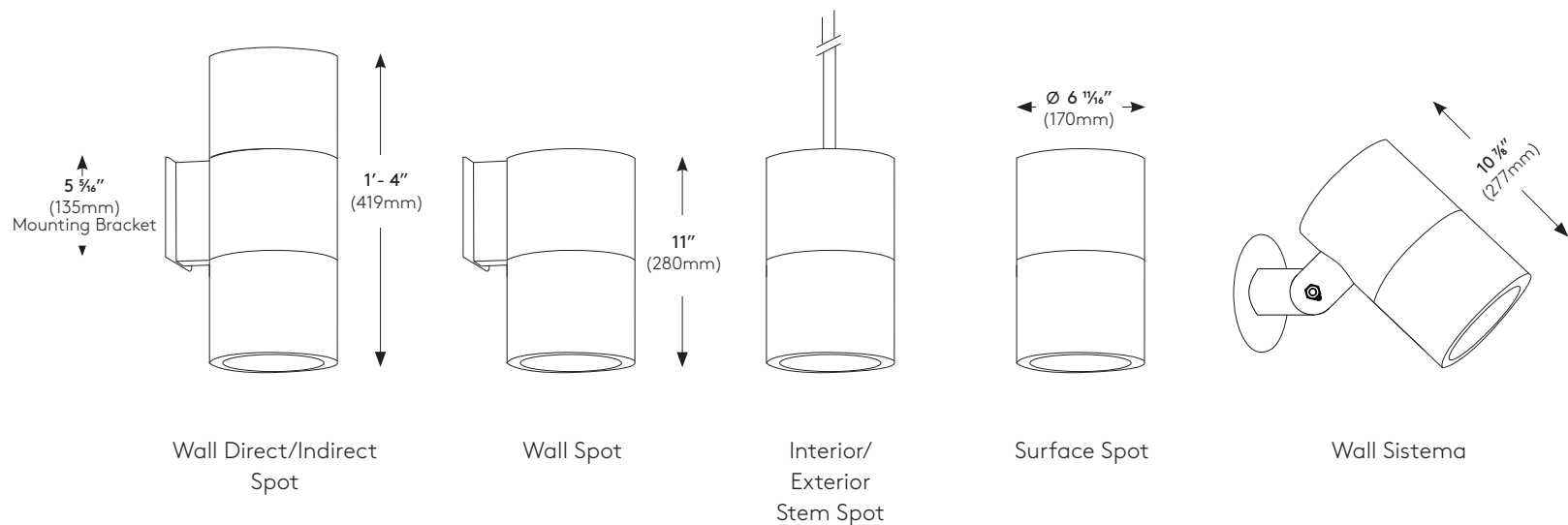
Wall Mount fixtures are available in two styles - Direct or Direct/Indirect - and can be used for ambient lighting to enhance aesthetic appeal. Use Melli Wall Mount to create a mood or make dramatic accent lighting effects for beautiful facade lighting.

Melli Stem, or Surface Mounts suspend from ceilings or exterior canopies to provide illumination for interior or exterior entranceways.

Melli Wall can be placed strategically along the sides of a building, around a dark corner, or in a narrow space to brighten or highlight walkways and paths.

Melli Sistema provides a range of beam angles creating a versatile addition to any space.

Melli can also be used as an interior light perfect for task lighting and creating a better lit area around those spaces that need a little bit of extra light. Melli can also be Wall, Surface, or Catenary mounted in interior spaces and can be used in offices, hospitality, foyers, and entryways.



















RECEPTION



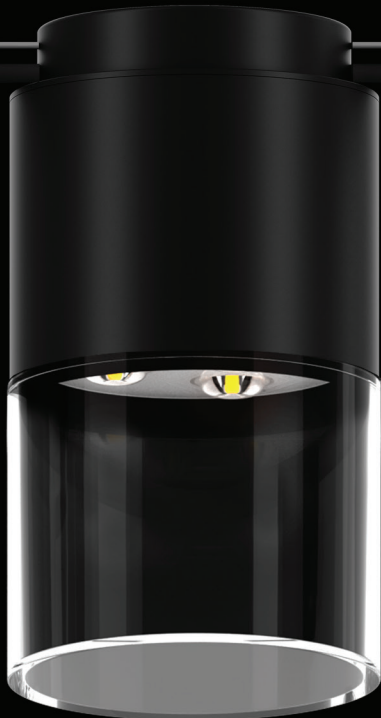
C A T E N A R Y



Melli Catenary with  
Diffuse Long Cylinder

Melli Catenary with  
Diffuse Short Cylinder





Melli Catenary Gen5  
Clear Long Cylinder

Melli Catenary Gen5  
Clear Short Cylinder



Melli Catenary  
Spot

Melli Catenary Spot  
with Honeycomb Louver

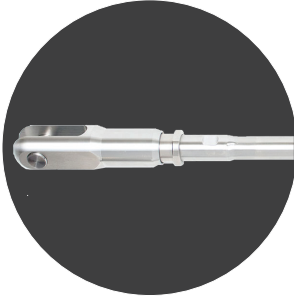


## What Can Selux Provide?

Selux can offer the complete solution. By submitting a completed Catenary Design Guide Form, Selux will build a catenary package fully engineered with supporting poles, cables, cords, and luminaires. Anchoring catenary systems to buildings or structures not provided by Selux will have to be evaluated by the on-site Professional Engineer (PE).

Catenary suspended luminaires require additional materials for proper installation of the lighting system. These additional materials include structural tension cable

for luminaire suspension, fittings for attachment to the building structure or structural masts/poles, and cable ends. Stainless steel is recommended due to its resistance to corrosion, strength, long life, and aesthetic appearance. Reference the luminaire weight and EPA on product specification sheet.



#### **Clevis Assembly & Adjustable Turnbuckles**

Manual adjustment is provided by rotating the adjusting sleeve.

#### **Stainless Steel Structural Tension Cable**

Offers the best combination of strength and stiffness for static structures. As spans and loads increase, the cables get larger in diameter (the number of strands increases).



#### **Poles & Anchor Points**

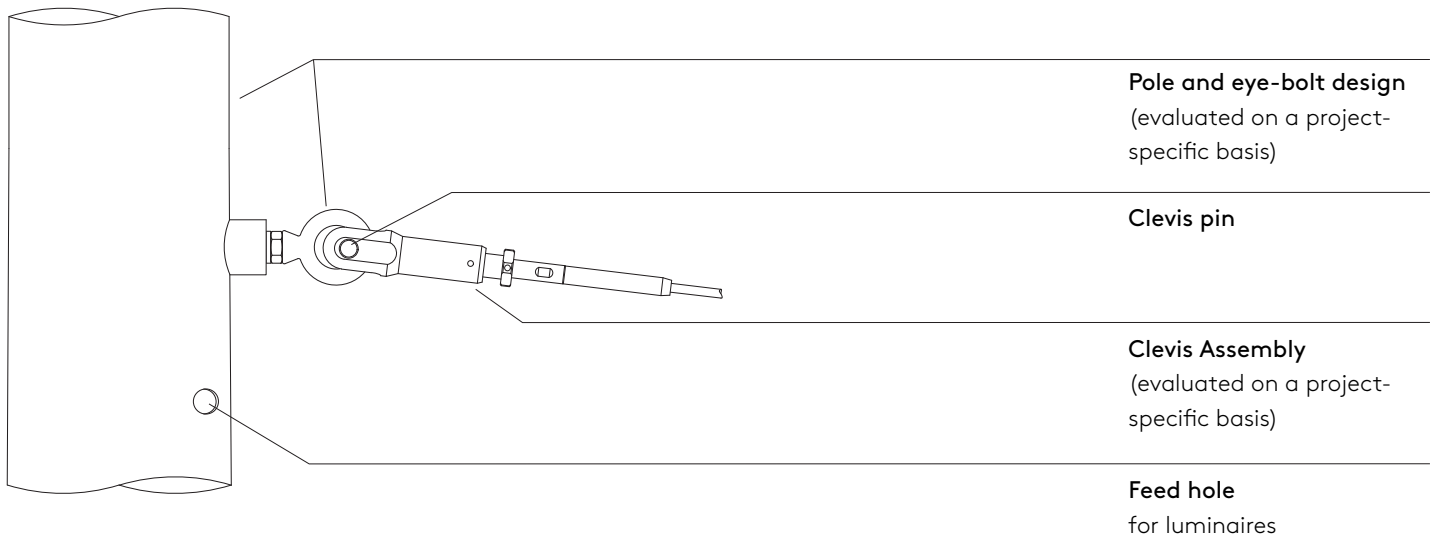
Selux can provide mounting points for poles or anchored brackets to buildings or structures. Selux can provide calculations and size the poles appropriately on a project-specific basis. Brackets to structure must be evaluated by on-site PE.

#### **Professional Engineer Stamped Drawings**

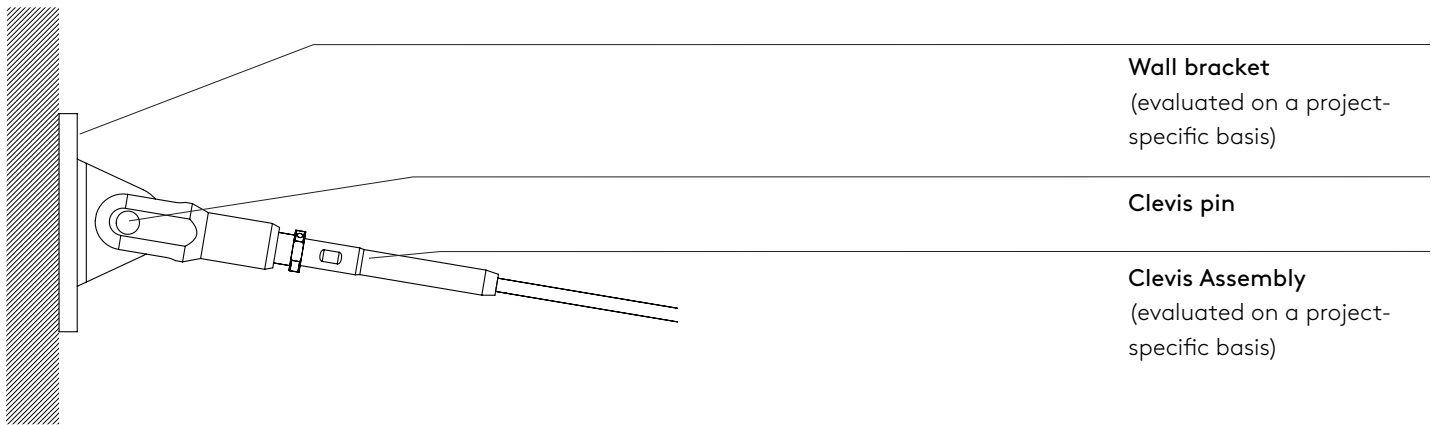
Selux can provide stamped drawings (if required) for a fee. It is important to identify this at the early stages of the project so the cost can be included in the budget. Stamped drawings may extend the lead time.



Example Pole Anchor Detail



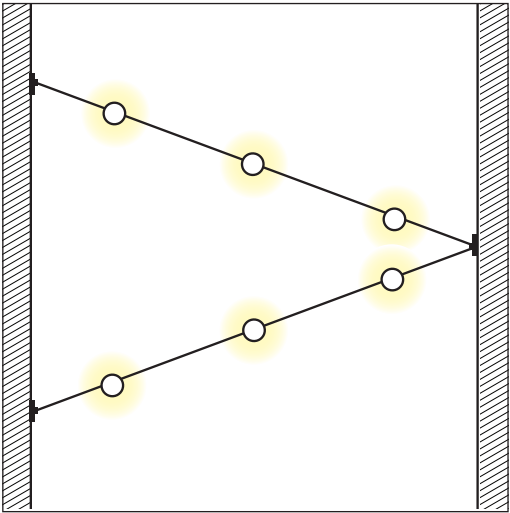
Example Wall Anchor Detail



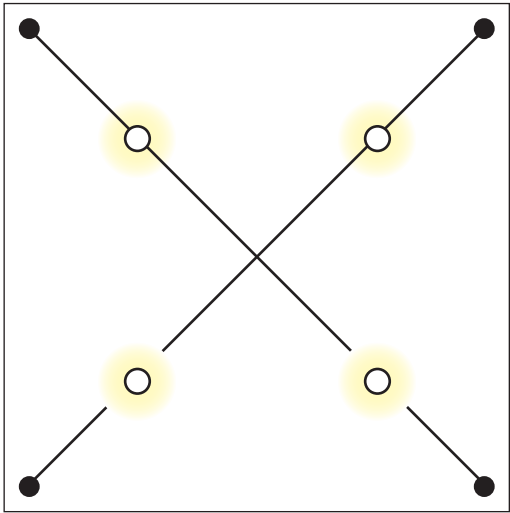
# Freedom of design

Catenary design examples shown here are only a few of the many possibilities you have. Consult with Selux to bring your unique catenary ideas to life.

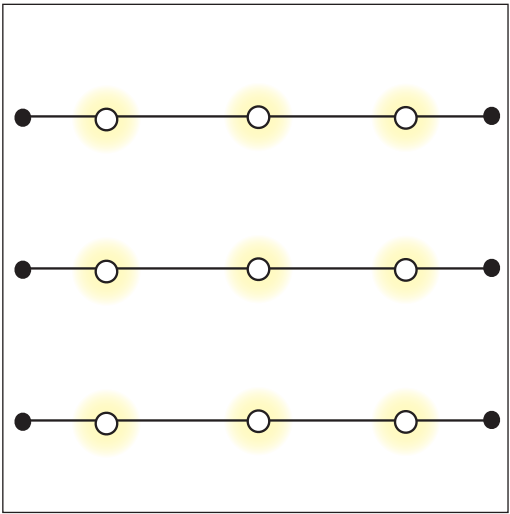
Building-to-Building



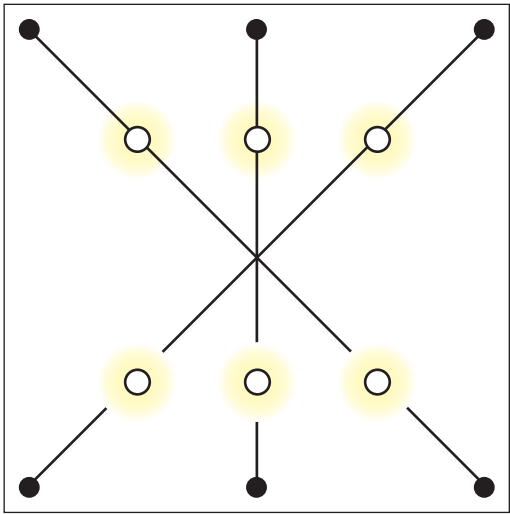
Pole-to-Pole X-Configuration



Pole-to-Pole or Building Linear Configuration



Pole-to-Pole Space Configuration



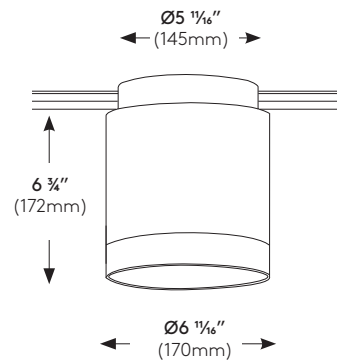
## Purposeful light and shadow, create mood and drama

When using catenary, Melli can be installed just about anywhere that people gather. Not only does it light up the space, but it improves visibility and safety. Melli catenary can be used in outdoor retail areas, public parks and squares, outdoor theaters, or festival sites. Even consider interior spaces that could be amplified with a creative catenary installation!

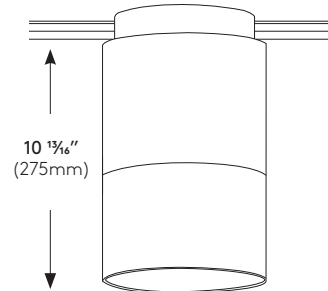
No obtrusive poles means that people can feel free to move around and utilize the beautiful space. The cables used

in the Melli Catenary system allow for long spans while supporting the weight of the luminaires you need to cover your area. The cables are usually anchored to buildings, walls, or poles.

With Melli Catenary, you have complete freedom to design the project the way you want and to create the mood or ambiance your space calls for.



Catenary  
Short Cylinder shown



Catenary  
Long Cylinder shown

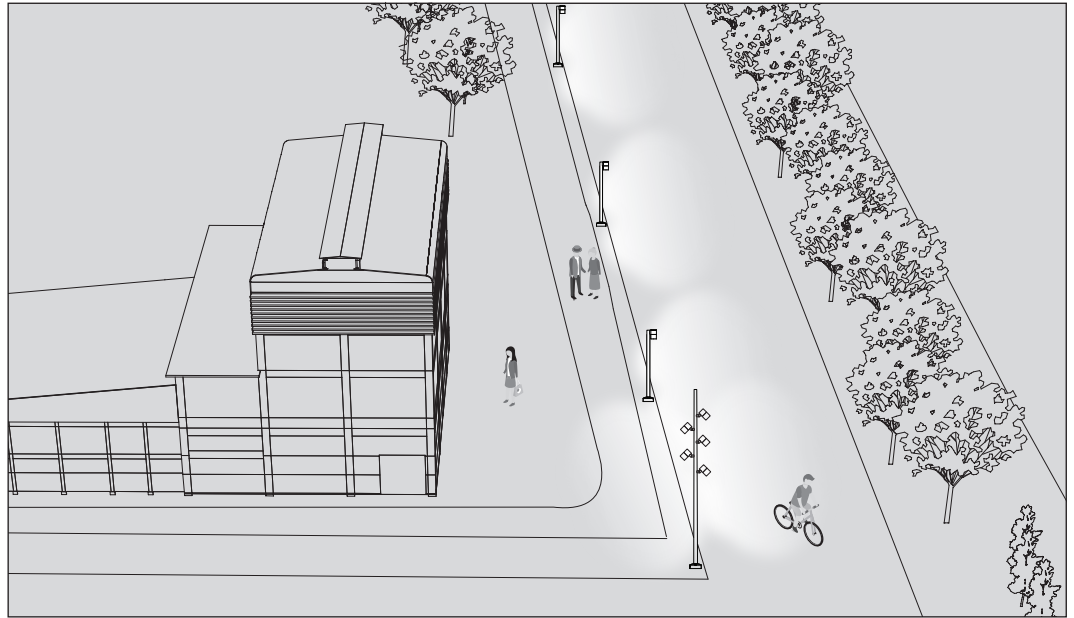






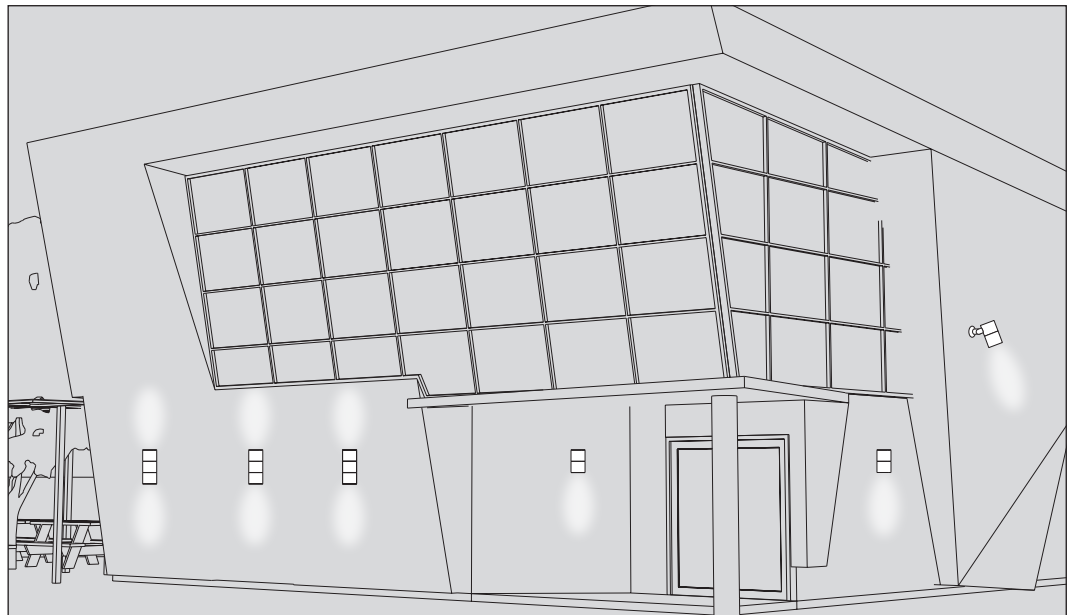
## Pedestrian Pathway

Use Melli pole mount to increase security in retail locations or suburban neighborhoods while encouraging people to meet and build community. Use a variety of optics and pole spacing to create the amount of light needed, where it is needed. You could even include a Melli Sistema pole with multiple fixtures to aim light into larger areas while maintaining the design language of the space.



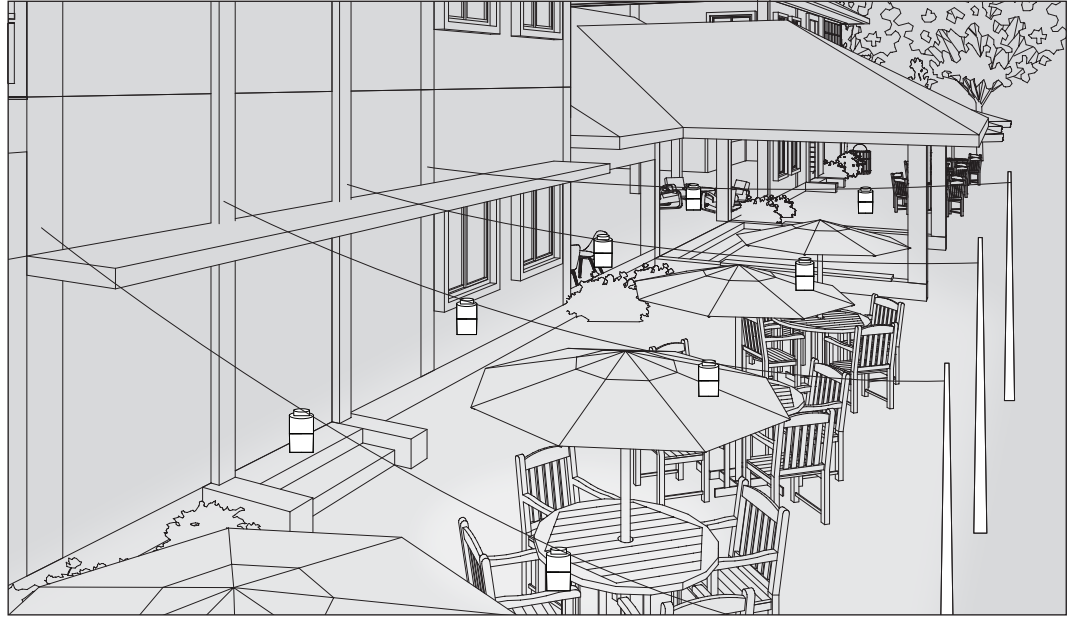
## Facade Lighting

Use the wall mount Melli Spot with Direct or Direct/Indirect distributions to light up the sides of a building. A variety of distributions provide wide beams, or precise, dramatic lighting patterns. Melli Sistema Wall mount fixtures increase the coverage by allowing for adjustability and aiming the light.



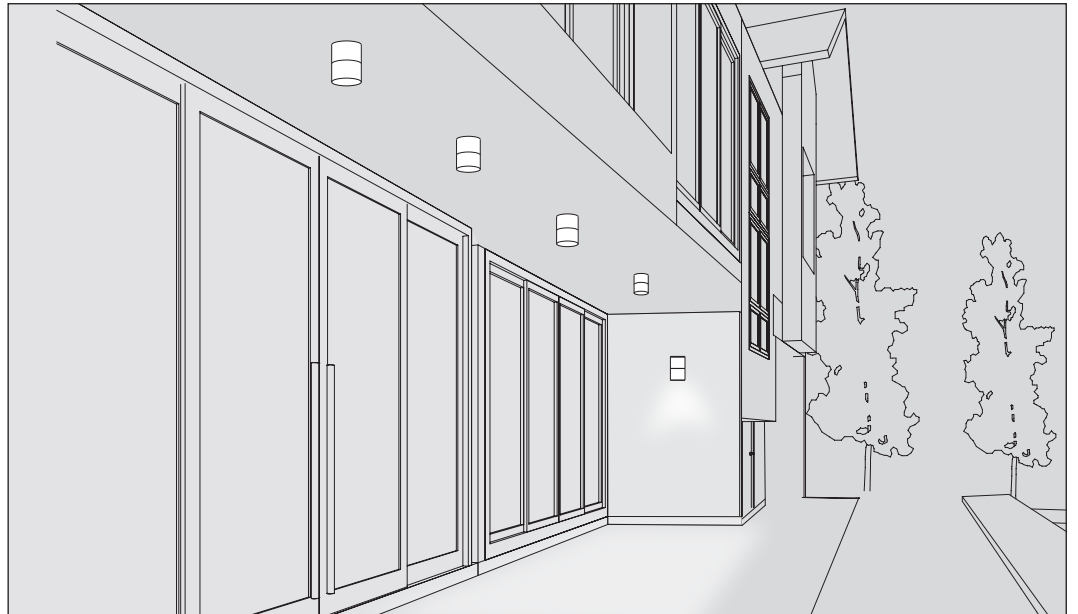
### Catenary (Pole-to-Building)

Open up public spaces by removing typical lighting posts and using catenary mounted Melli. Hang the fixtures between poles or buildings - or a combination of both - it frees up space for walking or gathering, while still allowing comfortable and voluminous lighting.



### Under Canopy

By mounting Melli under a canopy or in a passageway, you can bring a level of safety and welcome feeling to building exteriors and pathways.



# Selux Metal Finishes

Tiger Drylac powder-coated finishes are available in standard colors. Melli is also available in Premium Colors from the Selux RAL book, or custom colors on a project-specific basis.

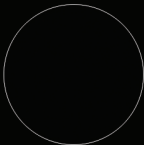
WH - white



BK - black



BL - semi-matte black



SV - silver



BZ - bronze



SP - pemium color



## Melli

When seeking a product  
prioritizing sustainability  
and the environment

Declare is a platform to share and find healthy building products. Manufacturers willingly disclose product information that can be found on the Declare labels. These labels are then accessible on a free and searchable database used by prominent designers, real estate owners and home owners, to specify products they know they can trust and that meet the requirements of leading green building standards, including Core Green Building, LBC, LEED, and WELL Certification.

Declare has positively changed the materials marketplace to enable the creation of buildings that support human and environmental health and has made it extremely easy to facilitate and simplify the exchange of information.

Selux is also proud to be Living Future Corporate Member. With this credential, Selux is recognized for its proficiency in the world's more ambitious, advanced, and holistic sustainable design standards.

You can trust that with these credentials, Melli by Selux supports a more sustainable future.

# Declare.

## Declare.

### Melli Direct - Diffuse Selux Corporation

**Final Assembly:** Highland, New York, USA  
**Life Expectancy:** 5+ Year(s)  
**End of Life Options:** Recyclable (90%), Landfill (10%)

#### Ingredients:

Aluminum; LED Driver<sup>1</sup>; Stainless Steel; Copper; Surge Protector<sup>1</sup>; Verapamil; Silica Gel; Rubber; Nylon 6/6; Nylon 6; LED PCB<sup>1</sup>; Propylene Carbonate

<sup>1</sup>LBC Temp Exception RL-002 - Small Electrical Components

#### Living Building Challenge Criteria: Compliant

##### I-13 Red List:

☐ LBC Red List Free      % Disclosed: 100% at 100ppm  
☒ LBC Red List Approved      VOC Content: Not Applicable  
☐ Declared

**I-10 Interior Performance:** Not Applicable

**I-14 Responsible Sourcing:** Not Applicable

SLX-0002  
EXP. 01 MAY 2026  
Original Issue Date: 2023

MANUFACTURER RESPONSIBLE FOR LABEL ACCURACY  
INTERNATIONAL LIVING FUTURE INSTITUTE™ [living-future.org/declare](https://living-future.org/declare)

## Declare.

### Melli Sistema Selux Corporation

**Final Assembly:** Highland, New York, USA  
**Life Expectancy:** 5+ Year(s)  
**End of Life Options:** Recyclable (90%), Landfill (10%)

#### Ingredients:

Aluminum; Copper; LED Driver<sup>1</sup>; Stainless Steel; Glass, oxide, chemicals; Silica Gel; Nylon 6; Nylon 6/6; Graphite

<sup>1</sup>LBC Temp Exception RL-002 - Small Electrical Components

#### Living Building Challenge Criteria: Compliant

##### I-13 Red List:

☐ LBC Red List Free      % Disclosed: 100% at 100ppm  
☒ LBC Red List Approved      VOC Content: Not Applicable  
☐ Declared

**I-10 Interior Performance:** Not Applicable

**I-14 Responsible Sourcing:** Not Applicable

SLX-0006  
EXP. 01 APR 2026  
Original Issue Date: 2025

MANUFACTURER RESPONSIBLE FOR LABEL ACCURACY  
INTERNATIONAL LIVING FUTURE INSTITUTE™ [living-future.org/declare](https://living-future.org/declare)

**Publisher**

Selux Corporation  
5 Lumen Lane  
Highland, NY 12528  
[www.selux.us](http://www.selux.us)

**Edited by (responsible)**

Selux Corporation

**Concept and Design**

Selux Corporation  
[www.selux.us](http://www.selux.us)

**Print**

Selux Corporation  
5 Lumen Lane  
Highland, NY 12528

Selux is a registered trademark of the Selux Corporation.  
Errors accepted and subject to change due  
to technical modifications. For conditions of sale  
and delivery please refer to [www.selux.us](http://www.selux.us).

The use of the text and images, even in part, is  
in breach of copyright without the consent of  
the Selux Corporation and punishable. This also applies to  
copies, translations, microfilming and processing  
with electronic systems.

June 17, 2025 1:45 PM