

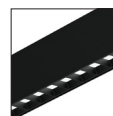
Date: \_\_\_\_\_ Customer: \_\_\_\_\_

Project: \_\_\_\_\_

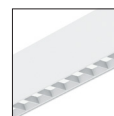
Type: \_\_\_\_\_ Qty: \_\_\_\_\_

selux

## M36 Combo LED Direct



Black Louver



White Louver



Luminous Lens



Mini Spotlight

Order Code: C36

A drawing for your M36 Combo is required - a line drawing to an architectural drawing is accepted.

C36	Series	C36 M36 Combo Direct											
	Light Engine	1C45 80CRI-1221lm 90CRI-1026lm 11.1W per foot	1C40 80CRI-1095lm 90CRI-920lm 9.9W per foot	1C35 80CRI-988lm 90CRI-830lm 8.7W per foot	1C30 80CRI-769lm 90CRI-647lm 7.3W per foot	1C25 80CRI-637lm 90CRI-535lm 6.1W per foot	1C20 80CRI-510lm 90CRI-429lm 4.9W per foot	* Values calculated from a 4' fixture at 3500K, 90+ CRI using LW shielding and DIM driver. For additional information, please see page 2.					
	CCT	927 2700K 90+ CRI	930 3000K 90+ CRI	935 3500K 90+ CRI	940 4000K 90+ CRI	827 2700K 80+ CRI	830 3000K 80+ CRI	835 3500K 80+ CRI	840 4000K 80+ CRI	TW <sup>1</sup> Tunable White	RGBW <sup>1</sup> RGBW	BIOS <sup>1</sup> BIOS SkyBlue	<sup>1</sup> Consult factory for Tunable White, RGBW and BIOS.
	Shielding  *Specify the total length required for each optic or blank cover	<b>Luminous Lens Options</b> <div><div><input type="radio"/> LW LED Optimized Lens _____FT _____IN</div><div><input type="radio"/> MI Microprism Inlay _____FT _____IN</div><div><input type="radio"/> NB LMO Symmetric _____FT _____IN</div><div><input type="radio"/> A2 LMO 20° Wall Washer _____FT _____IN</div><div><input type="radio"/> A5 LMO 5° Wall Grazer _____FT _____IN</div><div><input type="radio"/> BW LMO Batwing _____FT _____IN</div></div> <div><div><input type="radio"/> BM Black Louver _____FT _____IN</div><div><input type="radio"/> WM White Louver _____FT _____IN</div><div><input type="radio"/> BC Blank Cover _____FT _____IN</div></div>											<div>* Specify Louvers in 6" increments and all other optics and blank covers in 1" increments. * 6" blank section provided for each single spotlight and 12" blank section for each double and triple spotlight. * Blank Cover painted to match Housing finish. * Select one Shielding option - optics cannot be "stacked" within the same fixture.</div>
	Mini Spotlight Option	XX None	MSP Mini Spotlight										<sup>1</sup> See page 2 for Mini Spotlight ordering details.
	Mounting	C <sup>2</sup> Cable	S <sup>2</sup> Swivel Stem	RS <sup>2</sup> Rigid Stem	W <sup>2</sup> Wall Mount	FF <sup>3</sup> Surface Mount (with Flex Whip)	F2 <sup>3</sup> Surface Mount (for 2x4 J-box)	F4 <sup>3</sup> Surface Mount (with 4x4 J-box cover)	<div><sup>2</sup> Over 12' supplied with 2 or more housings that are joined in the field. <sup>3</sup> Over 8' supplied with 2 or more housings that are joined in the field.</div>				
	Overall Fixture Length	Length _____ FT _____ IN  <i>*Specify total nominal fixture length. Total luminaire length should equal the sum of all shielding lengths, spotlight modules, blank, covers, and sensors.</i>											<div>* Add total linear feet, spotlights, and blank cover plate lengths for total fixture length. * See page 10 for lengths with sensors.</div>
	Housing Finish	WH White	BL Semi-Matte Black	SV Silver	SP Specify Premium Color								* Custom colors are available, please consult factory.
	Voltage	1 120V	2 277V	U 120V through 277V 50/60hz capable	3 <sup>4</sup> 347V								<sup>4</sup> Available with DIM driver only.
	Driver	DIM 0-10V 1% (Linear)	DIL eldoLED 1% ECOdrive 0-10V (Loga-	DED eldoLED 1% ECOdrive DALI-2 (Logarithmic)	D01 eldoLED 0.1% SOLOdrive 0-10V (Linear)	DL01 eldoLED 0.1% Solodrive 0-10V (Logarithmic)	DE1 Lutron 1% EcoSystem	DC3 Lutron 3-wire dimming (consult factory)	BD BIOS SkyBlue Dimming: Warm DIM, Static, Dynamic, or Tunable (consult factory)	* Consult factory for other drivers.			
	Sensor Options	xE <sup>5,6</sup> Enlighted	XS1 <sup>5,6</sup> Sensor Switch Daylight	XS2 <sup>5,6</sup> Sensor Switch Occ/Vac	XS3 <sup>5,6</sup> Sensor Switch Occ/Vac/Daylight	XS <sup>N</sup> nLight Enabled (consult factory)	XS <sup>V</sup> Lutron Vibe (consult factory)	AWN Lutron Athena WirelessNode ready (consult factory)	CA Casambi Enabled (consult factory)	<div><sup>5</sup> Minimum fixture length 2'. See page 10 for details. <sup>6</sup> Requires DIM driver (0-10V).</div>			
	Circuiting Options	EC Emergency Circuit Wiring	EM <sup>7</sup> Integral EM Battery Pack	EMR Remote Micro Inverter (consult factory)	FS In-Line Fuse	CS Custom Switching (consult factory)	<div><sup>7</sup> EM available in minimum 4' length. * For emergency options with sensors, please consult factory</div>						
	Corners	UL9 <sup>8</sup> Unlit 90° Horizontal L	UT9 <sup>8</sup> Unlit 90° T-Section	UX9 <sup>8</sup> Unlit 90° X-Section	L9 <sup>9</sup> Lit Horizontal 90° Corner	T9 <sup>9</sup> Lit "T" section 90° Corner	X9 <sup>9</sup> Lit "X" section 90° Corner	<div><sup>8</sup> Unlit Corners for louver and spotlights. <sup>9</sup> Lit Corners only available with Luminous Lens options. * See page 13 for details. * For other angles or configurations consult factory.</div>					

M36 Combo  
Mini Spotlight



Order Code: \_\_\_\_\_ - 300L - \_\_\_\_\_ - \_\_\_\_\_ - U - \_\_\_\_\_ - \_\_\_\_\_

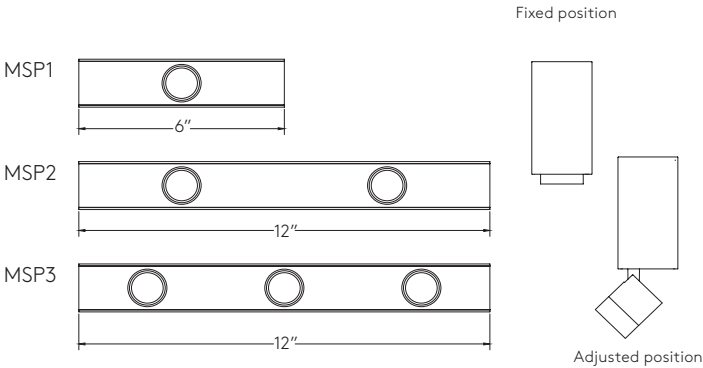
Note: Please submit drawing of configuration to the factory with your order.

	Mini Spotlight	MSP1x Mini Spotlight Single	MSP2x Mini Spotlight Double	MSP3x Mini Spotlight Triple	* Fill in quantity of spotlight sections required per luminaire where (x) is denoted.  * Standard configuration for MSP2 and MSP3 have matching CCT, optics, and finish. For mixed CCT, optics, and finish, please consult factory.	
300L	Light Engine	300L 90CRI nominal 300lm @ 4W per spot				
	CCT	927 2700K 90+ CRI	930 3000K 90+ CRI	935 3500K 90+ CRI	940 4000K 90+ CRI	
	Optics	S 14° Spot	M 27° Medium	F 37° Flood	* All heads in a spot module will be the same.	
	Finish	WH White	BL Semi-Matte Black			
U	Voltage	U 120V through 277V 50/60hz capable				
	Driver	DIM 0-10V 1% (Linear)	DIL eldoLED 1% ECOdrive 0-10V (Logarithmic)	DED eldoLED 1% ECOdrive DALI-2 (Logarithmic)	D01 eldoLED 0.1% SOLOdrive 0-10V (Linear)	DL01 eldoLED 0.1% Solodrive 0-10V (Logarithmic)
	Accessory Options	SN Snoot	HX Micro Honeycomb Louver	* All heads in a spot module will be the same.		

Mini Spotlights Details

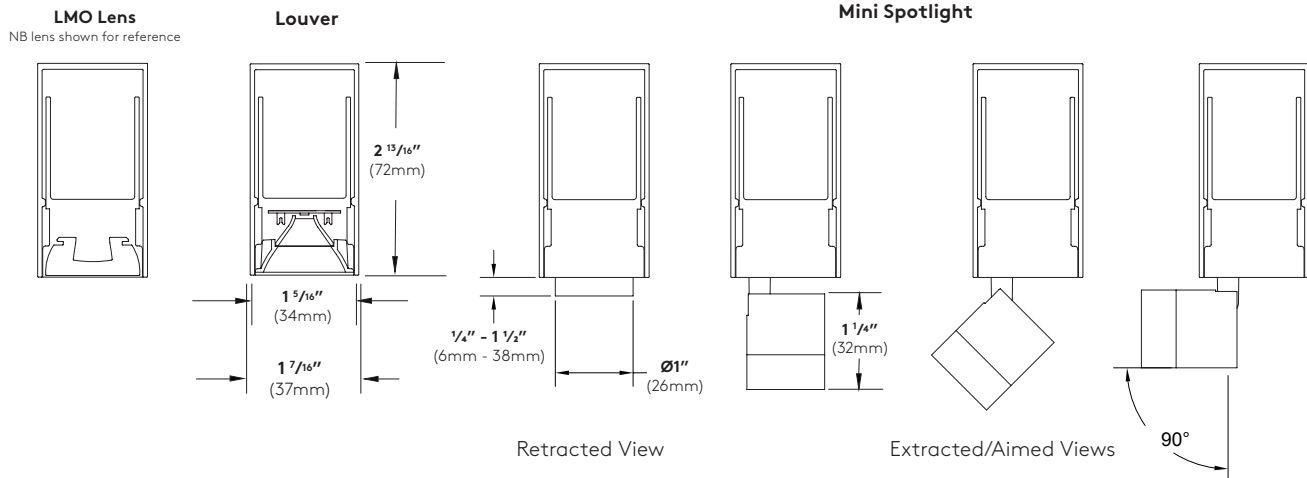
Individual spotlights can be rotated by +/-152° (304° total rotation). If desired orientation is outside of rotation range, remove Mini Spotlight module from housing on site and snap module back into housing in 180° rotated position. MSP2 and MSP3 spotlights are all oriented in the same direction. For mixed orientation of individual spotlights within MSP2 and MSP3, please consult factory.

Once fully pulled out of the fixture housing, spotlight can be aimed down or tilted up to 90°. Spotlight is always aimed down when in fixed position from factory.



Minimum Fixture Lengths when using Mini Spotlights

	# of Mini Spot Modules	Mini Spot Module Type	Illuminated Minimum Length	Minimum Total Fixture Length
Direct, No EM	1	Single	3'-0"	3'-6"
	1	Double/Triple	3'-0"	4'-0"
	2	Single	4'-0"	5'-0"
	2	Double/Triple	4'-0"	6'-0"
	3	Single	8'-0"	9'-6"
	3	Double/Triple	8'-0"	11'-0"
Direct, With EM	1	Single	5'-6"	6'-0"
	1	Double/Triple	5'-6"	6'-6"
	2	Single	6'-6"	7'-6"
	2	Double/Triple	6'-6"	8'-6"
	3	Single	10'-6"	12'-0"
	3	Double/Triple	10'-6"	13'-6"



## Construction:

**Housing** - Continuous, low copper 6063-T6 extruded aluminum profile with aluminum endcaps, available as Individual fixtures (up to 12') or Runs.

**Geartray** - Low copper 6063-T6 extruded aluminum profile.

**Shielding** - Extruded, impact resistant acrylic lens:

Luminous Lenses:

- LED Optimized White Lens (LW)
- Clear Lens with Microprism Inlay (MI)
- "LMO" Symmetric Lens (NB)
- "LMO" Asymmetric 5° Wall Grazer (A5)
- "LMO" Asymmetric 20° Wall Washer (A2)
- "LMO" Batwing (BW)

Louvers: (BM) Black, (WM) White  
Blank Cover (BC)

Spotlights: 14° Spot, 27° Medium, 37° Flood  
beam spreads

"LMO" refers to the Selux proprietary LED optical system - Light Modulation Optics.

**Mounting(s)**- 1/16" Aircraft Cable, Ø1/2" Swivel or Rigid Stem, Wall Bracket, Surface mount (see pages 4 through 7 for details).  
\*\*Cable, Stem and Wall mountings may not be symmetrical for Runs and Configurations due to the use of modular housing lengths. If symmetrical suspensions are required please consult the factory.  
\*\*Mixed mountings are possible - consult factory.

**Standard Luminaire Length** - Fixture housing available in nominal 1" increments.

**Exact Length Luminaires** - Please consult factory for project specific requirements.

**M36 Combo Joiner(s)** - Runs and Configurations are supplied in multiple housings that are joined together in the field using the supplied Joining System. This allows ease of installation and ensures a uniform appearance

**Weight** - 2.25 lbs per foot

## Electrical/Performance:

**LED Light Engine** - Brand-name mid-power LEDs create a high efficiency LED light engine able to provide a lumen maintenance of 94% at 25,000 hours and 88% at 60,000 hours at 25°C per TM-21 reports. Reported L70 >60,000 hours.

Spotlight lumen maintenance if 95% at 25,000 hours and 90% at 62,000 hours at 25°C per TM-21 reports. Reported L70 >145,000 hours.

**Photometrics** - Consult factory for IES Files. Independent photometric lumen measurement complies with IES LM-79-08 testing procedures. Due to the LED manufacturer's tolerances, the listed output has a ±5% tolerance. For outputs based on different optics or CCT, please see pages 14-15 for details.

**CCT** - Available in 2700K, 3000K, 3500K and 4000K, tolerance within a 3-step MacAdam ellipse.

**CRI** - CRI - Linear Optics: 80+ and 90+CRI  
Spotlights (90+ only): TM-30 Rf: 90, TM-30 Rg: 97, CRI Ra: 92, CRI R9: 58.

**All Drivers** - High efficiency, constant current, soft start, Electronic Class 2 with a PFC>0.90.

**Sensors** - Selux offers a variety of integral sensor options. Consult factory for more details.

**Emergency** - There are multiple emergency options available - Emergency Circuit, Remote Micro Inverter and Integral EM Battery Pack. Please consult factory for use of sensors with emergency options. For more details on EC option, please see page 12.

## Thermal Performance:

**Ambient Operating Temperature** - Luminaires suitable for maximum ambient temperature of 25°C (77°F) for DE1 at 1C40 and 1C45 light engines; 35°C (95°F) for all others.

Luminaires are suitable for minimum ambient temperatures of -40°C (-40°F) for DIM, DIL, DED, D01, and DL01 drivers; 0°C (32°F) for DE1 drivers.

Luminaires with spotlights suitable for maximum ambient temperature of 25°C.

## Luminaire Finish:

**Powder Coat** - All Selux luminaires are finished in high quality polyester powder coating in our Tiger Drylac certified facility and are tested in accordance with test specifications for coatings from ASTM and PCI.

All products undergo a five stage intensive pretreatment process where product is thoroughly cleaned, phosphated, and sealed. Selux powder coated products provide excellent salt and humidity resistance as well as ultra violet resistance for color retention.

Standard interior colors are White (WH), Semi-Matte Black (BL) and SILVER (SV). Specify Premium Color (SP) available, please specify from your Selux color selection guide.

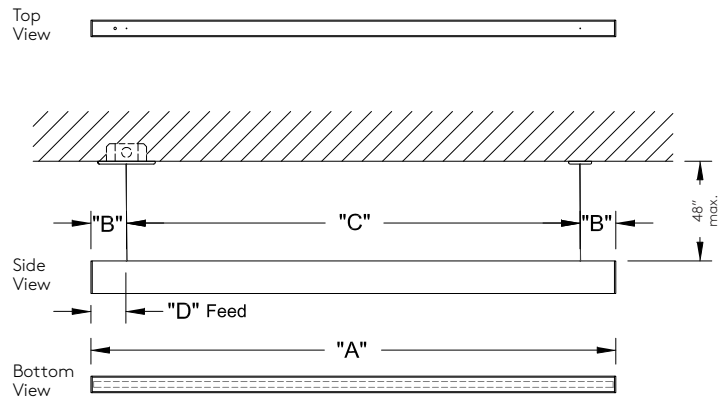
## Warranty:

**5 Year Limited LED Luminaire Warranty** - Selux offers a 5 Year Limited Warranty to the original purchaser that the M36 Combo LED luminaire shall be free from defects in material and workmanship for up to five (5) years from date of shipment. This limited warranty covers the LED driver and LED light engine when installed according to Selux instructions and operated within the Ambient Temperature. For additional details and exclusions, see "Selux Terms and Condition of Sale".

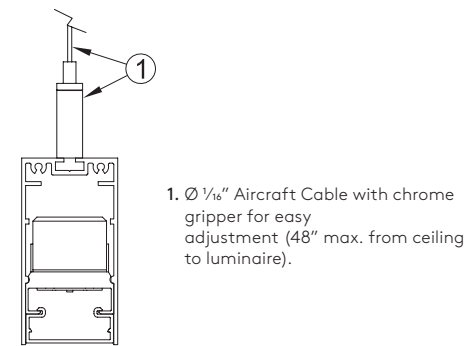
## Certifications and Compliance:

NRTL - For Dry and Damp Locations  
(I.E. cULus; cCSAus)  
ARRA Compliant  
RoHS Compliant

Cable Mounting (C)



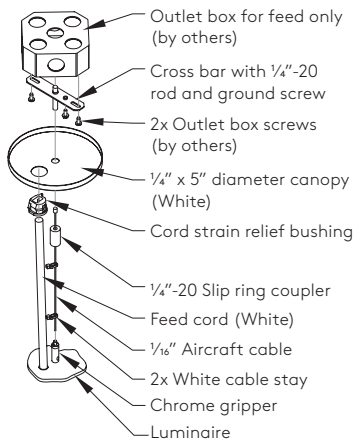
Cable Mounting (C)



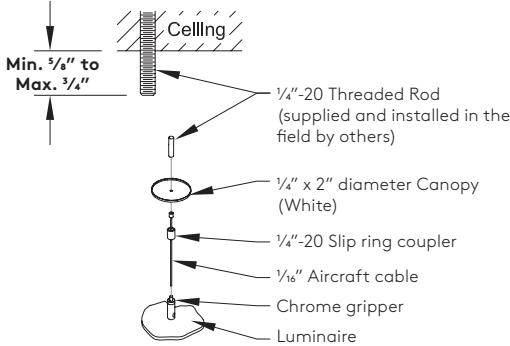
Cable Mounting (C) - Dimensions								
Nominal Length	"A" Housing Length		"B" (Ref.) End Suspensions		"C" Mid. Suspension		"D" Feed Location	
	Feet/Inch	MM	Feet/Inch	MM	Feet/Inch	MM	Feet/Inch	MM
01 (1ft.)	1' - 1/4"	311	0' - 2 1/8"	54	0' - 8"	203	0' - 1 1/8"	29
02 (2ft.)	2' - 1/4"	616	0' - 2 1/8"	54	1' - 8"	508	0' - 1 1/8"	29
03 (3ft.)	3' - 1/4"	921	0' - 3 1/8"	79	2' - 6"	762	0' - 2 1/8"	54
04 (4ft.)	4' - 1/4"	1226	0' - 3 1/8"	79	3' - 6"	1067	0' - 2 1/8"	54
05 (5ft.)	5' - 1/4"	1530	0' - 3 1/8"	79	4' - 6"	1372	0' - 2 1/8"	54
06 (6ft.)	6' - 1/4"	1835	0' - 3 1/8"	79	5' - 6"	1676	0' - 2 1/8"	54
07 (7ft.)	7' - 1/4"	2140	0' - 3 1/8"	79	6' - 6"	1981	0' - 2 1/8"	54
08 (8ft.)	8' - 1/4"	2445	0' - 3 1/8"	79	7' - 6"	2286	0' - 2 1/8"	54
09 (9ft.)	9' - 1/4"	2750	0' - 3 1/8"	79	8' - 6"	2591	0' - 2 1/8"	54
10 (10ft.)	10' - 1/4"	3054	0' - 3 1/8"	79	9' - 6"	2896	0' - 2 1/8"	54
11 (11ft.)	11' - 1/4"	3359	0' - 3 1/8"	79	10' - 6"	3200	0' - 2 1/8"	54
12 (12ft.)	12' - 1/4"	3664	0' - 3 1/8"	79	11' - 6"	3505	0' - 2 1/8"	54

\*Dimension(s) rounded to the nearest 1/16" with a ± 1/16" (1mm) tolerance.

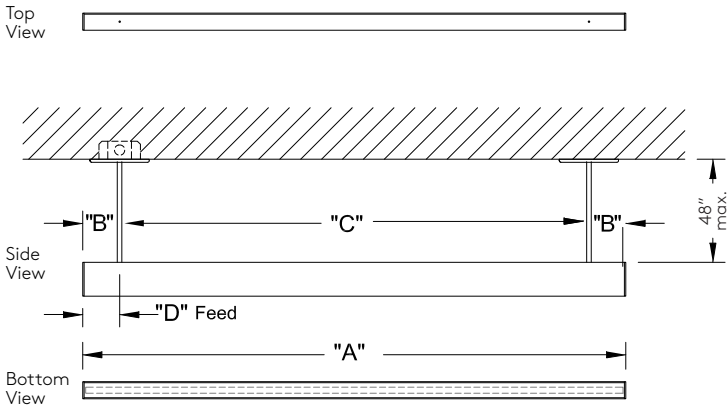
C36 Cable (C) Suspension Detail  
(Feed location(s) only)



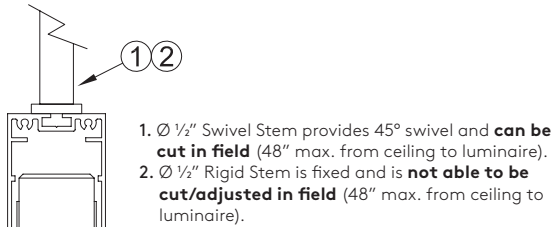
C36 Cable (C) Suspension Detail  
(Non-Feed location(s) only)



Stem Mounting (S & RS)



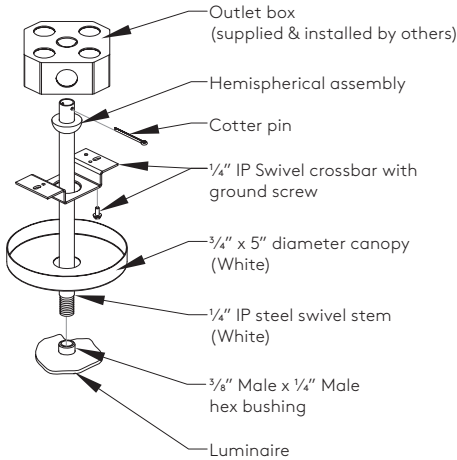
Stem Mounting (S & RS)



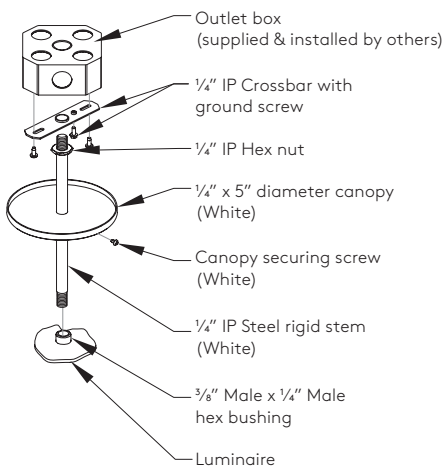
Swivel (S) & Rigid Stem (RS) Mountings - Dimensions								
Nominal Length	"A" Housing Length		"B" (Ref.) End Suspensions		"C" Mid. Suspension		"D" Feed Location	
	Feet/Inch	MM	Feet/Inch	MM	Feet/Inch	MM	Feet/Inch	MM
01 (1ft.)	1' - 1/4"	311	0' - 2 1/8"	54	0' - 8"	203	0' - 2 1/8"	54
02 (2ft.)	2' - 1/4"	616	0' - 2 1/8"	54	1' - 8"	508	0' - 2 1/8"	54
03 (3ft.)	3' - 1/4"	921	0' - 3 1/8"	79	2' - 6"	762	0' - 3 1/8"	79
04 (4ft.)	4' - 1/4"	1226	0' - 3 1/8"	79	3' - 6"	1067	0' - 3 1/8"	79
05 (5ft.)	5' - 1/4"	1530	0' - 3 1/8"	79	4' - 6"	1372	0' - 3 1/8"	79
06 (6ft.)	6' - 1/4"	1835	0' - 3 1/8"	79	5' - 6"	1676	0' - 3 1/8"	79
07 (7ft.)	7' - 1/4"	2140	0' - 3 1/8"	79	6' - 6"	1981	0' - 3 1/8"	79
08 (8ft.)	8' - 1/4"	2445	0' - 3 1/8"	79	7' - 6"	2286	0' - 3 1/8"	79
09 (9ft.)	9' - 1/4"	2750	0' - 3 1/8"	79	8' - 6"	2591	0' - 3 1/8"	79
10 (10ft.)	10' - 1/4"	3054	0' - 3 1/8"	79	9' - 6"	2896	0' - 3 1/8"	79
11 (11ft.)	11' - 1/4"	3359	0' - 3 1/8"	79	10' - 6"	3200	0' - 3 1/8"	79
12 (12ft.)	12' - 1/4"	3664	0' - 3 1/8"	79	11' - 6"	3505	0' - 3 1/8"	79

\*Dimension(s) rounded to the nearest 1/16" with a  $\pm \frac{1}{16}$ " (1mm) tolerance.

C36 Swivel Stem (S) Suspension Detail  
(feed wires through stem supplied by Selux)

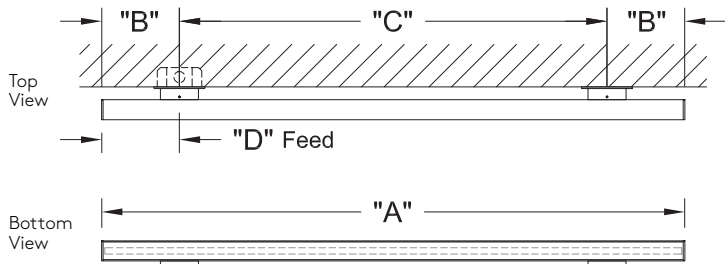


C36 Rigid Stem (RS) Suspension Detail  
(feed wires through stem supplied by Selux)



Wall Mounting (W)

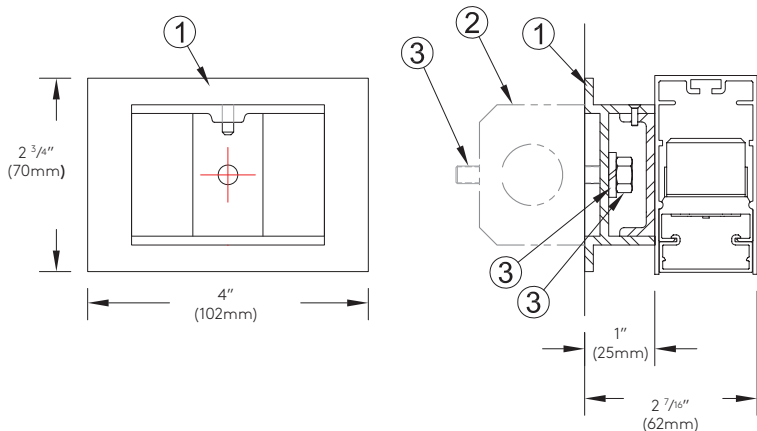
For patterns and configurations that are to include a wall mounted option, please see page 13 and 14 for details.



Wall (W) Mount - Dimensions								
Nominal Length	"A" Housing Length		"B" (Ref.) End Suspensions		"C" Mid. Suspension		"D" Feed Location	
	Feet/Inch	MM	Feet/Inch	MM	Feet/Inch	MM	Feet/Inch	MM
01 (1 ft.)	1' - 1/4"	311	0' - 6 1/8"	156	N/A	N/A	0' - 6 1/8"	156
02 (2 ft.)	2' - 1/4"	616	0' - 3 1/8"	79	1' - 6"	458	0' - 3 1/8"	79
03 (3 ft.)	3' - 1/4"	921	0' - 6 1/8"	156	2' - 0"	610	0' - 6 1/8"	156
04 (4 ft.)	4' - 1/4"	1226	0' - 6 1/8"	156	3' - 0"	914	0' - 6 1/8"	156
05 (5 ft.)	5' - 1/4"	1530	0' - 6 1/8"	156	4' - 0"	1219	0' - 6 1/8"	156
06 (6 ft.)	6' - 1/4"	1835	0' - 6 1/8"	156	5' - 0"	1524	0' - 6 1/8"	156
07 (7 ft.)	7' - 1/4"	2140	0' - 6 1/8"	156	6' - 0"	1829	0' - 6 1/8"	156
08 (8 ft.)	8' - 1/4"	2445	0' - 6 1/8"	156	7' - 0"	2134	0' - 6 1/8"	156
09 (9 ft.)	9' - 1/4"	2750	0' - 6 1/8"	156	8' - 0"	2438	0' - 6 1/8"	156
10 (10 ft.)	10' - 1/4"	3054	0' - 6 1/8"	156	9' - 0"	2743	0' - 6 1/8"	156
11 (11 ft.)	11' - 1/4"	3359	0' - 6 1/8"	156	10' - 0"	3048	0' - 6 1/8"	156
12 (12 ft.)	12' - 1/4"	3664	0' - 6 1/8"	156	11' - 0"	3353	0' - 6 1/8"	156

\*Dimension(s) rounded to the nearest 1/16" with a ± 1/16" (1mm) tolerance.

Wall Mount (W)  
(Covers a 2x4 J-box only)

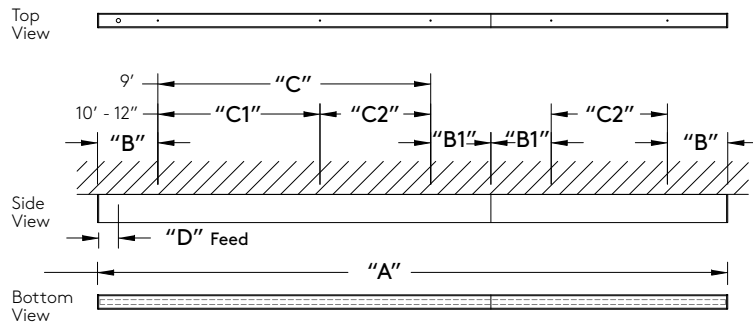
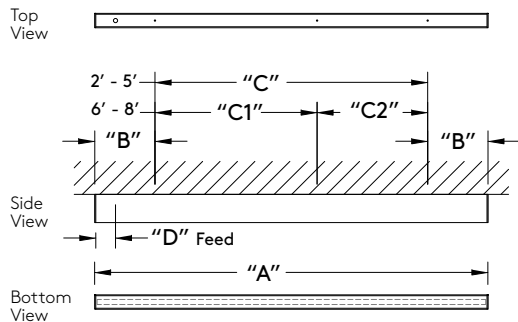


- 1. Aluminum wall bracket (by Selux).
- 2. 2" x 4" J-box at feed location (supplied and installed by others).
- 3. 1/4"-20 Threaded rod, 1/4"-20 lock washer and 1/4"-20 nut required to anchor the wall bracket. Mounting hardware supplied and installed to code by others.

## Surface Mounting (FF, F2 &amp; F4)

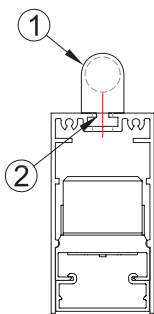
1' to 8'

Over 9'



Surface Mount (FF, F2, &amp; F4) - Dimensions

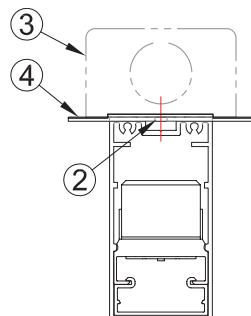
Nominal Length	"A" Housing Length		"B" (Ref.) End Suspensions		"B1" End Suspensions		"C" Mid. Suspension		"C1" Mid. Suspension		"C2" Mid. Suspension		"D" Feed Location	
	Feet/Inch	MM	Feet/Inch	MM	Feet/Inch	MM	Feet/Inch	MM	Feet/Inch	MM	Feet/Inch	MM	Feet/Inch	MM
01 (1 ft.)	1' - 1/4"	311	1 5/8"	41	N/A		0' - 9"	229	N/A		N/A		0' - 4 1/8"	105
02 (2 ft.)	2' - 1/4"	616	1 5/8"	41	N/A		1' - 9"	533	N/A		N/A		0' - 4 1/8"	105
03 (3 ft.)	3' - 1/4"	921	6 1/8"	156	N/A		2' - 0"	610	N/A		N/A		0' - 2 1/8"	54
04 (4 ft.)	4' - 1/4"	1226	6 1/8"	156	N/A		3' - 0"	914	N/A		N/A		0' - 2 1/8"	54
05 (5 ft.)	5' - 1/4"	1530	6 1/8"	156	N/A		4' - 0"	1219	N/A		N/A		0' - 2 1/8"	54
06 (6 ft.)	6' - 1/4"	1835	6 1/8"	156	N/A		3' - 0"	914	2' - 0"	610	N/A		0' - 2 1/8"	54
07 (7 ft.)	7' - 1/4"	2140	6 1/8"	156	N/A		3' - 0"	914	3' - 0"	914	N/A		0' - 2 1/8"	54
08 (8 ft.)	8' - 1/4"	2445	6 1/8"	156	N/A		3' - 0"	914	4' - 0"	1219	N/A		0' - 2 1/8"	54
09 (9 ft.)	9' - 1/4"	2750	6 1/8"	156	6"	152	4' - 0"	1219	N/A		3'	914	0' - 2 1/8"	54
10 (10 ft.)	10' - 1/4"	3054	6 1/8"	156	6"	152	3' - 0"	914	2' - 0"	610	3'	914	0' - 2 1/8"	54
11 (11 ft.)	11' - 1/4"	3359	6 1/8"	156	6"	152	3' - 0"	914	3' - 0"	914	3'	914	0' - 2 1/8"	54
12 (12 ft.)	12' - 1/4"	3664	6 1/8"	156	6"	152	3' - 0"	914	4' - 0"	1219	3'	914	0' - 2 1/8"	54

\*Dimension(s) rounded to the nearest 1/16" with a  $\pm 1/16"$  (1mm) tolerance.Surface Mount (FF)\*  
(with Flex Whip)

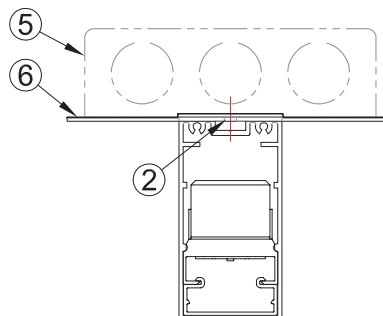
\*Please note: Fixture does not cover a J-box.

Surface Mount (F2)  
(with 2x4 J-Box cover)

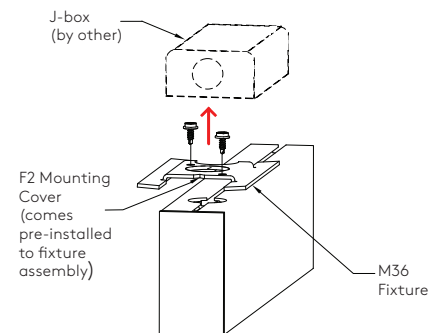
F2 Mounting Cover (comes pre-installed to fixture assembly)

Surface Mount (F4)  
(with 4x4 J-Box cover)

F2 Mounting Cover (comes pre-installed to fixture assembly)

Surface Mount (F2 or F4)  
(with 2x4 J-Box cover)

F2 shown for reference



- 6' Flex Whip
  - $\varnothing 3/16"$  Mounting hole drilled at the factory (mounting hardware to code by others).
  - 2"x 4" J-box at feed location (supplied and installed by others).
  - 2"x 4" J-box cover (by Selux).
  - 4"x 4" J-box at feed location (supplied and installed by others).
  - 4"x 4" J-box cover (by Selux).
- \* Please note: J-box cover plate is not mechanically fastened to the J-box.

Drivers:

0-10V linear dimming (DIM)

Luminaires supplied with drivers offering the capability of either normal switched operation of 0-10V dimming for linear dimming curve. Fixtures ship wired for dimming. For on/off functionality, simply cap the dimming leads. Minimum dimming level preset at factory to 1%. (Due to size constraints, 1' luminaires are supplied with a driver from a different manufacturer than 2' and above luminaires. For details, please consult factory).

0-10V logarithmic eldoLED ECOdrive dimming (DIL)

Luminaires supplied with drivers offering the capability of either normal switched operation of 0-10V dimming for logarithmic dimming curve. Fixtures shipped wired for dimming. For on/off functionality, simply cap the dimming leads. Minimum dimming level preset at factory to 1%.

eldoLED ECOdrive DALI-2 dimming (DED)

Luminaires supplied with ECOdrive DALI-2 dimming driver with logarithmic dimming curve. Minimum dimming level preset at factory to 1%. For "dim to dark" (down to 0.1%), please consult factory.

eldoLED SOLOdrive 0-10V linear dimming (D01)

Luminaires supplied with SOLOdrive 0-10V dimming driver with linear dimming curve. Minimum dimming level preset at factory to 0.1% and "dim to dark".

eldoLED SOLOdrive 0-10V logarithmic dimming (DL01)

Luminaires supplied with SOLOdrive 0-10V dimming driver with logarithmic dimming curve. Minimum dimming level preset at factory to 0.1% and "dim to dark".

LUTRON EcoSystem dimming (DE1)

Luminaires supplied with Hi-Lume EcoSystem (4 wire, digital link) dimming driver programmed for Constant Current Reduction (CCR). Minimum dimming level down to 1% with SoftOn/FadeToBlack.

\*For control recommendations, please contact driver manufacturer.

Driver Quantity for Linear Sections													
Light Engine	Dimming Code	Length											
		1ft	2ft	3ft	4ft	5ft	6ft	7ft	8ft	9ft	10ft	11ft	12ft
1C20	DIM/DIL/D01/DL01	1											1
	DED												2
	DE1												1
1C25	DIM/DIL/D01/DL01	1									1		
	DED										2		
	DE1										1		
1C30	DIM/DIL/D01/DL01	1						1				2	
	DED							2				3	
	DE1							1				2	
1C35	DIM/DIL/D01/DL01	1					1			2			
	DED						2					3	
	DE1						1			2			
1C40	DIM/DIL/D01/DL01	1				1			2				
	DED					2					3		
	DE1					x							
1C45	DIM/DIL/D01/DL01	1			1			2					
	DED				2				3				
	DE1				x								

\*For inrush and control current, please refer to the driver manufacturers' spec sheets.

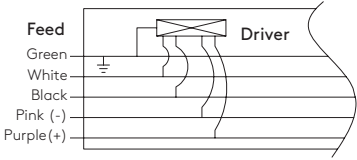
For Mini Spotlights, one driver is used per single (MSP1), double (MSP2), or triple (MSP3) module, in addition to drivers used in linear sections.

\*Mini Spotlight modules are combined on a separate circuit as standard. For any project specific switching requirements please consult factory.



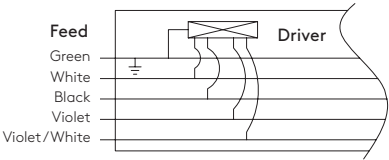
Wiring Diagrams

0-10V linear (DIM)  
0-10V logarithmic eldoLED ECOdrive (DIL)  
DALI-2 logarithmic eldoLED ECOdrive (DED)  
0-10V linear eldoLED SOLOdrive (D01)  
0-10V logarithmic eldoLED SOLOdrive (DL01)



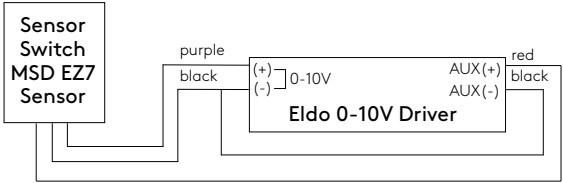
Standard Wiring supplied for all drivers	Green = Ground White = Neutral (120V/277V/347V) or L2 (240V) Black = Hot/L1 (120V-347V)
- The following wire(s) are in addition to the standard above -	
DIM, DIL, DED, D01, DL01	Pink = (-) DALI-2 or 0-10V Dimming Control Purple = (+) DALI-2 or 0-10V Dimming Control
DE1	Violet = "E1" Digital Link Dimming Control Violet/White = "E2" Digital Link Dimming Control

Lutron EcoSystem (DE1)

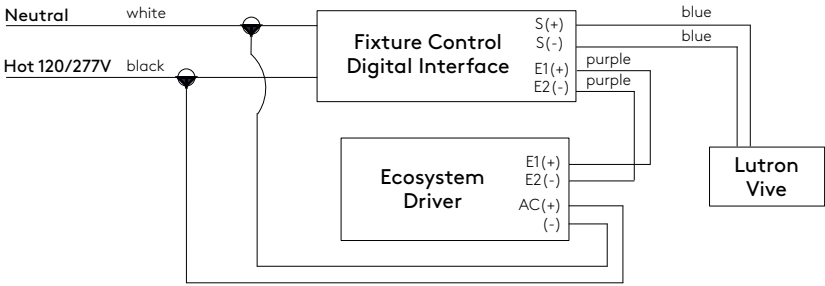


Sensor Wiring Diagrams

Sensor Switch



Lutron Vive



Sensor Ordering Chart		
Quantity	Sensor	Settings*
<b>x</b> Number of Sensors	<b>S</b> Sensor Switch MSD EZ <b>V</b> Lutron Vive DFCSJ	<b>1</b> Daylight <b>2</b> Occupancy/Vacancy <b>3</b> Daylight/Occupancy/Vacancy * Settings not available with Enlighted

\*Sensor can control up to (5) drivers. Please refer to driver quantity chart on page 8. Multiple sensors may be required for longer lengths.

#### Sensor Switch MSD EZ (S)

Occupancy/vacancy and daylight harvesting. For full functionality and programming options, select settings option 3. If a different settings option is selected, other settings may be unavailable. For full details, please see MSD EZ spec sheets on the Sensor Switch website. Must be paired with DIM driver selection. Manual control of dimming not available with MSD EZ sensor.

\*Sensor can control up to (30) drivers. Please refer to driver quantity chart on page 8. Multiple sensors may be required for longer lengths.

#### Lutron Vive DFCSJ (V)

The DFCSJ-OEM-OCC provides the capabilities of daylight harvesting and occupancy/vacancy sensing. When integrated with the DFC-OEM-DBI (Fixture Control Digital Link Interface), the sensor is wirelessly compatible with the DE1 Lutron EcoSystem driver. Commissioning by certified Lutron technician.

\*Vive DFCSJ sensor can control up to a maximum of five (5) drivers per sensor. Please refer to driver chart on page 8. Multiple sensors may be required for longer lengths.

	Occupancy	Vacancy	Daylight Harvesting	Driver Compatibility
Sensor Switch MSD EZ (S)	✓	✓	✓	DIM
Lutron Vive DFCSJ (V)	✓	✓	✓	DE1

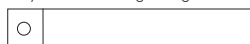
Please contact controls manufacturer for details prior to specifying.

**Factory Presets** - Sensors come from the sensor manufacturer with factory presets for each of the settings in above chart. Please see sensor manufacturers' spec sheets for details on presets and re-programming.

**Commissioning** - Commissioning of sensors and installation by others. Contact sensor manufacturer for details and costs associated with commissioning the system prior to specification of sensors.

**Standard Sensor Placement** - for other placement options, please consult factory. For functionality and limitations, please see sensor details above.

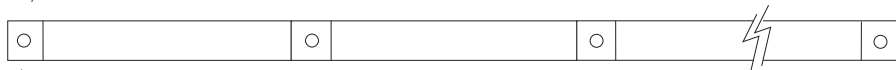
Qty 1 Sensor - Beginning



Qty 2 Sensor - Beginning and End (9' fixtures and longer)

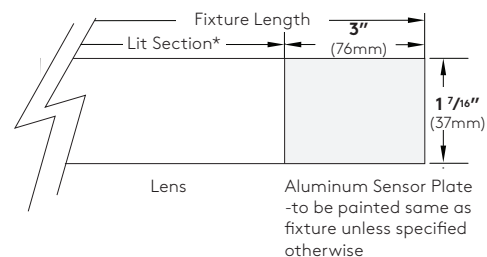


Qty 3+ Sensor



Beginning of Run

- Notes: 1. For recommended spacing between sensors, please consult the sensor manufacturer.  
2. Exact sensor placement and coverage will be defined by approved factory drawing.  
3. Sections controlled by sensors may not be symmetrical - consult factory for layout.



\*Lit section will be the fixture length minus 3" for sensor plate.

**Driver power chart** - use below values to determine the nominal watts per foot based on driver, light engine, and voltage.

\* Driver losses increase the wattage for fixtures less than 4 foot.

\*\* Values are nominal values determined based on multiple tested fixtures.

Driver Power for Linear				
Driver	Light Engine	Nominal Wattage		
		120V	277V	347V
DIM, DIL, DED, D01, DL01	1C20	4.9	5.3	n/a
	1C25	6.1	6.5	
	1C30	7.3	7.7	
	1C35	8.7	8.9	
	1C40	9.9	10.1	
	1C45	11.1	11.3	
DE1	1C20	5.5	5.2	n/a
	1C25	6.7	6.3	
	1C30	8.0	7.6	
	1C35	9.3	8.8	
	1C40	10.5	10.0	
	1C45	11.7	11.2	
DIM@347V	1C20	n/a	n/a	5.4
	1C25			6.5
	1C30			7.7
	1C35			8.8
	1C40			10.0
	1C45			11.2
EM	all	6		n/a

Driver Power for Mini Spotlight		
Driver	Nominal Wattage	
	120V	277V
MSP1 (single spotlight)	5.5	5.7
MSP2 (double spotlight)	10.3	10.2
MSP3 (triple spotlight)	14.7	15.0

**Emergency Wiring (EC)** - EC luminaires are intended to be wired to separate panels/breakers for emergency use. See install instructions for proper wiring.

For 2' to 6' nominal luminaires, the entire fixture is wired for operation on emergency circuit.

For 7' and up nominal luminaires, the first 4' nominal length is wired for operation by a separate EM circuit by default to meet the required "Life Safety Code" (NFPA 101).

If a different configuration is needed, please consult factory.

Note: Wiring may vary slightly due to on-site conditions or local codes. Please follow all safety installation protocols contained within install instructions when installing luminaire.

**Emergency Battery (EM)** - The EM battery is located integral to fixture and is factory pre-wired. See install instructions for proper wiring.

10W constant power Emergency Battery Pack.

For individual fixtures, emergency option will illuminate the first 4' section of fixture. For continuous runs, please consult factory to advise on 4' section intended for emergency use. For fixtures >12' or if a different configuration is needed, please consult factory.

Emergency test switch is located next to the geartray, behind the lens.

Emergency battery is suitable for a minimum temperature of 32°F. For lower temperatures, please consult factory.

\*Emergency battery option is UNV for use with 120V or 277V and is not available for 347V.

\*Please note battery pack requires an unswitched hot.

\*For EM with sensors, please consult factory.

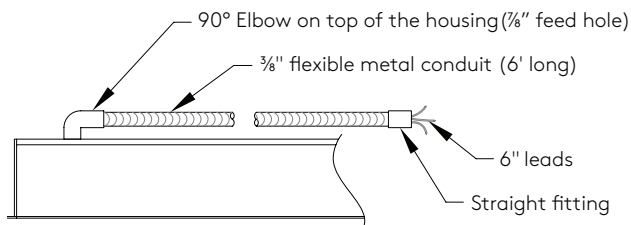
\*If a different configuration is needed, please consult factory.

Note: Wiring may vary slightly due to on site conditions or local codes. Please follow all safety installation protocols contained within install instructions when installing luminaire.

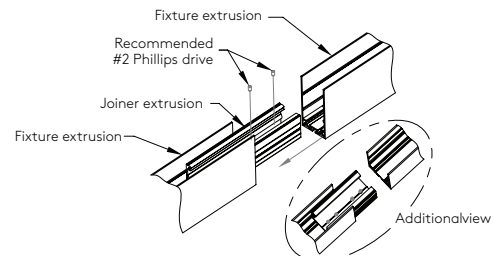
**Fuse (FS)** - Fusing, luminaires supplied with a in-line fuse located on the hot wire for each feed (supplied with an 8A slow burn fuse).

**Custom Switching (CS)** - For project-specific switching requirements, please consult factory. Luminaires available with separately switched 4' (nominal) linear sections starting at 7' and up. Luminaire is intended to be wired to the same panel/breaker (not intended for Emergency use).

### Flex Whip - standard



### Joiner System - standard for Runs and Configurations



## Standard Direct shapes/configurations

Listed below are the minimum lengths and details for standard shapes. These standard shapes can be combined with each other and/or the standard luminaire lengths, ensuring full even illumination. If you have any questions, please consult the factory.

The minimum standard lengths for "L" shapes:

- UL9 or L9 open shapes is 4' x 4' nominal (example: leg, 90, leg)
- UL9 or L9 closed shapes is 6' x 6' nominal (example: 90, leg, 90)  
(Exception is that the UL9 or L9 can be joined directly to provide a 4' x 4' nominal shape).

\*For sensors in configurations, please consult factory

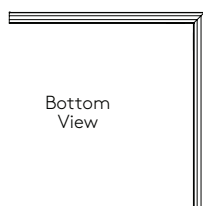
For patterns and configurations that are to include a wall-mounted option, please consult factory to identify location, on which side of housing and spacing of brackets required.

The minimum standard lengths for "T" & "X" shapes:

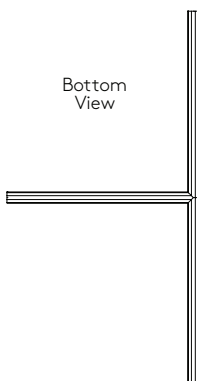
- UT9 or T9 = 4' nominal on the short leg and 8' nominal on the long side
- UX9 or X9 = 8' nominal for either direction

### Luminous Lenses - fully illuminated

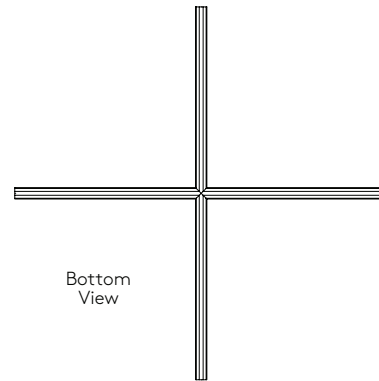
**L9 - Lit 90° Horizontal L**



**T9 - Lit 90° T-Section**

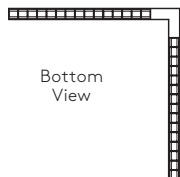


**X9 - Lit 90° X-Section**

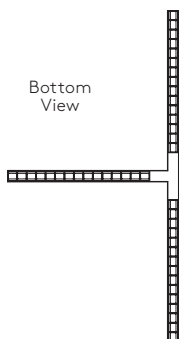


### Louvers or Mini Spotlights - blank covers used at the corners

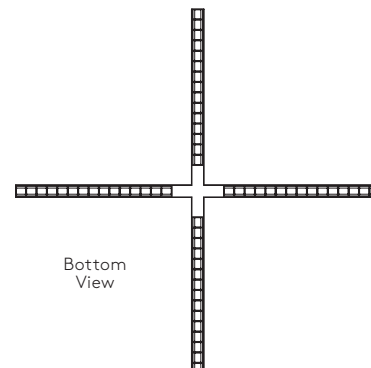
**UL9 - UnLit 90° Horizontal L**



**UT9 - UnLit 90° T-Section**



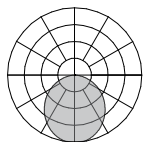
**UX9 - UnLit 90° X-Section**



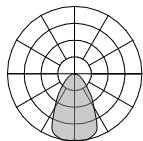
## Project Specific Direct shapes/configurations

Selux is capable of supplying a wide range of project solutions including different shapes, angles, and sizes to meet the project requirements. Due to the complex nature of these project specific layout(s) we ask that you please consult the factory with the project requirements for review.

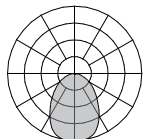
## Photometry



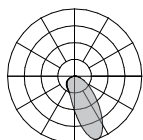
LW - LED Optimized White Lens				
Light Engine	Lumens per 4 foot	Lumens per foot	Input watts per foot	lm/W
1C35	3322	831	8.9	94



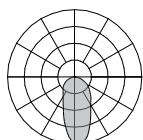
MI - Clear Lens with Microprism Inlay				
Light Engine	Lumens per 4 foot	Lumens per foot	Input watts per foot	lm/W
1C35	3389	847	8.9	96



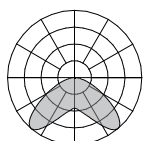
NB - LMO Symmetric				
Light Engine	Lumens per 4 foot	Lumens per foot	Input watts per foot	lm/W
1C35	4051	1013	8.9	114



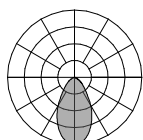
A2 - LMO Asymmetric 20° Wall Washer				
Light Engine	Lumens per 4 foot	Lumens per foot	Input watts per foot	lm/W
1C35	4185	1046	8.9	118



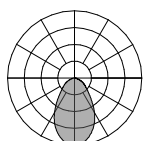
A5 - LMO Asymmetric 5° Wall Grazer				
Light Engine	Lumens per 4 foot	Lumens per foot	Input watts per foot	lm/W
1C35	4195	1049	8.9	118



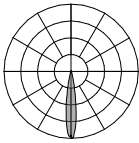
BW - LMO Batwing				
Light Engine	Lumens per 4 foot	Lumens per foot	Input watts per foot	lm/W
1C35	3667	917	8.9	103



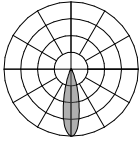
BM - Black Louver				
Light Engine	Lumens per 4 foot	Lumens per foot	Input watts per foot	lm/W
1C35	2286	572	8.7	66



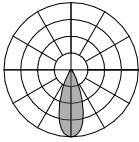
WM - White Louver				
Light Engine	Lumens per 4 foot	Lumens per foot	Input watts per foot	lm/W
1C35	2881	721	8.7	83



MSP1 - Mini Spotlight 14° Spot			
Light Engine	Lumens	Input watts	lm/W
300L	338	4	84



MSP1 - Mini Spotlight 27° Medium			
Light Engine	Lumens	Input watts	lm/W
300L	265	4	74



MSP1 - Mini Spotlight 37° Flood			
Light Engine	Lumens	Input watts	lm/W
300L	296	4	74

M36 Combo Direct	
CCT Multiplier	
4000K	1.05
3500K	1.00
3000K	0.96
2700K	0.92
CRI Multiplier	
90+ CRI	1.00
80+ CRI	1.19

M36 Combo Spotlights	
CCT Multiplier	
4000K	1.08
3500K	1.00
3000K	1.00
2700K	1.00

M36 Combo Direct	
Lens Multiplier	
Direct	
LW	1.00
MI	1.02
NB	1.22
A2	1.26
A5	1.26
BW	1.10
BM	0.69
WM	0.87

CCT and CRI multipliers apply to the photometry, IES files, and per foot values listed on page 1 (light engine).

Lens multipliers supplied for per foot values listed on page 1 (light engine).

Declare.

M36 Combo  
Selux Corporation

Final Assembly: Highland, New York, USA  
Life Expectancy: 5+ Year(s)  
End of Life Options: Recyclable (90%), Landfill (10%)

Ingredients:  
Aluminum; LED Driver<sup>1</sup>; LED PCB<sup>1</sup>; Copper; Polyethylene  
Terephthalate; Stainless Steel; Carbonic acid, polymer with 4,4'-  
(1-methylethylidene)bis(phenol); Polyamide fibers; Polymethyl  
methacrylate; Nylon 6/6

<sup>1</sup>LBC Temp Exception RL-002 - Small Electrical Components

Living Building Challenge Criteria: Compliant

I-13 Red List:  
☐ LBC Red List Free % Disclosed: 100% at 100ppm  
☒ LBC Red List Approved VOC Content: Not Applicable  
☐ Declared

I-10 Interior Performance: Not Applicable  
I-14 Responsible Sourcing: Not Applicable

SLX-0007  
EXP. 01 MAY 2026  
Original Issue Date: 2024

MANUFACTURER RESPONSIBLE FOR LABEL ACCURACY  
INTERNATIONAL LIVING FUTURE INSTITUTE™ [living-future.org/declare](https://living-future.org/declare)



LIVING FUTURE  
CORPORATE MEMBER