

Date: \_\_\_\_\_ Customer: \_\_\_\_\_

Project: \_\_\_\_\_

Type: \_\_\_\_\_ Qty: \_\_\_\_\_



# M125 LED Recessed

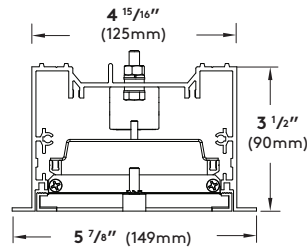


Order Code: \_\_\_\_\_ - \_\_\_\_\_ - \_\_\_\_\_ - \_\_\_\_\_ - \_\_\_\_\_ - \_\_\_\_\_ - \_\_\_\_\_ - \_\_\_\_\_ - \_\_\_\_\_ - \_\_\_\_\_ - \_\_\_\_\_

Series	L125R1 L125 Recessed Flanged		L125R2 Recessed Flanged with Flush Endcaps		L125 For Concrete Pour Only			
Light Engine	<b>1B45</b> 1116lm/11.9W per foot	<b>1B40</b> 1009lm/10.6W per foot	<b>1B35</b> 888lm/9.3W per foot	<b>1B30</b> 758lm/7.8W per foot	<b>1B25</b> 680lm/6.9W per foot	<b>1B20</b> 513lm/5.1W per foot	*Values calculated from a 4' fixture at 4000K, 90+ CRI using LI shielding and DIM driver. For additional information please see page 2.	
	<b>2B45</b> 2025lm/23.5W per foot	<b>2B40</b> 1830lm/20.9W per foot	<b>2B35</b> 1610lm/18.3W per foot	<b>2B30</b> 1376lm/15.3W per foot	<b>2B25</b> 1233lm/13.5W per foot	<b>2B20</b> 930lm/10.1W per foot		
CCT	<b>27</b> 2700K 90+ CRI	<b>30</b> 3000K 90+ CRI	<b>35</b> 3500K 90+ CRI	<b>40</b> 4000K 90+ CRI				
Shielding	<b>LI</b> Clear Glass with LED Optimized Inlay	<b>MI</b> Clear Lens with Microprismatic Inlay	<b>PC<sup>1</sup></b> Prismatic Lens	<b>SD<sup>1</sup></b> Satine Lens	<b>CNB</b> ClearLens LMO Symmetric	<b>CA2</b> Clear Lens LMO Asymmetric 20° Wall Washer	<b>CA5</b> Clear Lens LMO Asymmetric 5° Wall Grazer	<sup>1</sup> IK10 Rated.
	<b>CBW</b> Clear Lens LMO Batwing	<b>DNB<sup>1</sup></b> Diffuse Lens LMO Symmetric	<b>DA2<sup>1</sup></b> Diffuse Lens LMO Asymmetric 20° Wall Washer	<b>DA5<sup>1</sup></b> Diffuse Lens LMO Asymmetric 5° Wall Grazer	<b>DBW<sup>1</sup></b> Diffuse Lens LMO Batwing			
Mounting	<b>SH</b> Suspension Bracket	<b>TS</b> 1" Studs (factory installed)	<b>RC</b> Rotating Crossbar	<b>PM</b> Perimeter Mount	<b>MTB</b> Metal Box Concrete Pour (for use with L125 housing only)		* For mixed mountings consult factory.	
Nominal Fixture Length	<b>02</b> 2 ft.	<b>03</b> 3 ft.	<b>04</b> 4 ft.	<b>XX<sup>2</sup></b> Runs are available in 2', 3', or 4' nominal increments. Round up to the nearest foot and replace the "xx" with the # (i.e. 16=16' nominal).			<sup>2</sup> See page 2 for details.	
Finish	<b>WH</b> White	<b>BK</b> Black	<b>BL</b> Semi-Matte Black	<b>SV</b> Silver	<b>SP</b> Specify Premium Color		* Custom colors are available, please consult factory.	
Voltage	<b>UNV</b> 120V through 277V 50/60hz capable	<b>347</b> 347V (consult factory)						
Driver	<b>DIM<sup>3</sup></b> 0-10V 1% (Linear)	<b>DIL<sup>3</sup></b> eldoLED 1% ECOdrive 0-10V (Logarithmic)	<b>DED<sup>3</sup></b> eldoLED 1% ECOdrive DALI-2 (Logarithmic)	<b>DE1<sup>3</sup></b> Lutron 1% EcoSystem	<b>DC3</b> Lutron 1% 3-Wire (consult factory)		<sup>3</sup> See page 7 for details.	
Fixture Options	<b>MT<sup>4</sup></b> Media Trunking	<b>FS</b> Single Fusing	<b>TR</b> Tamper Resistant	<b>SS<sup>5</sup></b> Separate Switching	<b>CS</b> Custom Switching (consult factory)	<b>NF</b> Suitable for Natatorium Environment (consult factory)	<sup>4</sup> SH and TS mountings only. <sup>5</sup> See page 8 for details. <sup>6</sup> Fixture not rated for use as a raceway.	
	<b>EFB<sup>6</sup></b> End Feed Both Ends (for conduit daisy chain)	<b>EFC</b> End Feed Left (for conduit)	<b>EFR</b> End Feed Right (for conduit)					
Emergency Options	<b>EC<sup>7</sup></b> Emergency Circuit Wiring	<b>EMR</b> Remote Micro Inverter (consult factory)	<b>CEM<sup>7,8,9,10</sup></b> Cold-Weather Integral EM Battery Pack				<sup>7</sup> See page 8 for details. <sup>8</sup> Available with DIM driver only. <sup>9</sup> Minimum -20°C. <sup>10</sup> Not available with Cxx or Dxx optics.	



L125R1-1Bxx-xx-TS-xxx-xx-xx



### Construction:

**Housing** - Continuous, 6063-T6 extruded aluminum profile up to 4 feet long. Die cast aluminum endcaps made from low copper, marine-grade aluminum alloy.

**Geartray** - Formed aluminum.

**Shielding** - Choice of tempered Clear Glass with LED Optimized Inlay or Micropismatic Inlay; 4mm Satine or Clear Polycarbonate Prismatic lenses available (IK10 with Polycarbonate or Satine lenses only).

"LMO" refers to the Selux proprietary LED optical system - Light modulation optics. These lenses are offered in M125 behind a Clear (C) or Diffuse (D) Lens for even illumination and comfortable lit appearance.

- "LMO" Symmetric (NB)
- "LMO" Asymmetric 20° Wall Washer (A2)
- "LMO" Asymmetric 5° Wall Grazer (A5)
- "LMO" Batwing (BW)

**Gasket:** One-piece silicone gasket fully seals (IP65) for weather-proofing, dust, and insect control.

**Fixture Door** - Secure, completely sealed at all points of entry from water, insects, and dust. Two captive stainless steel screws allow access to LED light engine. Door remains captive when servicing with corrosion protected steel safety cable on both ends.

**Mounting(s)** - Suspension Bracket (SH), 1" Studs - factory installed (TS), Rotating Crossbar (RC), Perimeter Mount (PM), Metal Concrete Pour (MTB). Not to be used as Vertical Wall Mount.

- Suspension Bracket (SH): Bolted onto fixture or media trunk, located nominally every 4' (support wires or rod supplied and installed by others).
- Ø¼" Threaded Rod (TS): ¼"-20 stud only. Couplers and Rod by others.
- Rotating Crossbar (RC): For inaccessible ceilings, adjustable for ceiling thicknesses from ¼" to 2". Supplied, 2 per fixture.
- Media Trunk (MT): Provides raceway for additional cables, etc. in continuous Run or pattern applications.

**Runs** - ¾" IP nipple connector for water-tight connection between luminaires in a Run. Two connections are required per connection.

**Weight** - 5 lb. per foot.

### Electrical/Performance:

**LED Light Engine** - Brand-name mid-power LEDs create a high efficiency LED light engine able to provide a lumen maintenance of 96% at 25,000 hours and 93% at 60,000 hours for 1B and 2B light engines at 25°C per TM-21 reports. Reported L70 greater than 60,000 hours.

**Photometrics** - Consult website or factory for IES Files. Independent photometric lumen measurement complies with IES LM-79-08 testing procedures. Due to the LED manufacturer's tolerances, the listed output has a ±5% tolerance. For outputs based on different optics or CCT, please see pages 9-10 for details.

**CCT** - Available in 2700K, 3000K, 3500K, and 4000K, tolerance within a 3-step MacAdam ellipse.

**CRI** - 90+ CRI.

**All Drivers** - High efficiency, constant current, soft start, Electronic Class 2 with a PFC>0.90. For more detailed information on the available drivers, please see page 7.

### Thermal Performance:

**Ambient Operating Temperature** - Luminaires suitable for maximum ambient temperature of 25°C (77°F) for DE1 at 1C40 and 1C45 light engines; 35°C (95°F) for all others.

Luminaires are suitable for minimum ambient temperatures of -40°C (-40°F) for DIM, DL, DED, D01, and DL01 drivers; 0°C (32°F) for DE1 drivers.

### Luminaire Finish:

**Powder Coat** - All Selux luminaires are finished in high quality polyester powder coating in our Tiger Drylac certified facility and are tested in accordance with test specifications for coatings from ASTM and PCI.

All products undergo a five stage intensive pretreatment process where product is thoroughly cleaned, phosphate, and sealed. Selux powder coated products provide excellent salt and humidity resistance as well as ultra violet resistance for color retention.

Standard interior colors are White (WH), Black (BK), Semi-Matte Black (BL), and Silver (SV). Selux premium colors (SP) are available, please specify from your Selux color selection guide.

### Warranty:

**5 Year Limited LED Luminaire Warranty** - Selux offers a 5 Year Limited Warranty to the original purchaser that the M125 LED luminaire shall be free from defects in material and workmanship for up to five (5) years from date of shipment. This limited warranty covers the LED driver and LED light engine when installed according to Selux instructions and operated within the Ambient Temperature. For additional details and exclusions, see "Selux Terms and Condition of Sale."

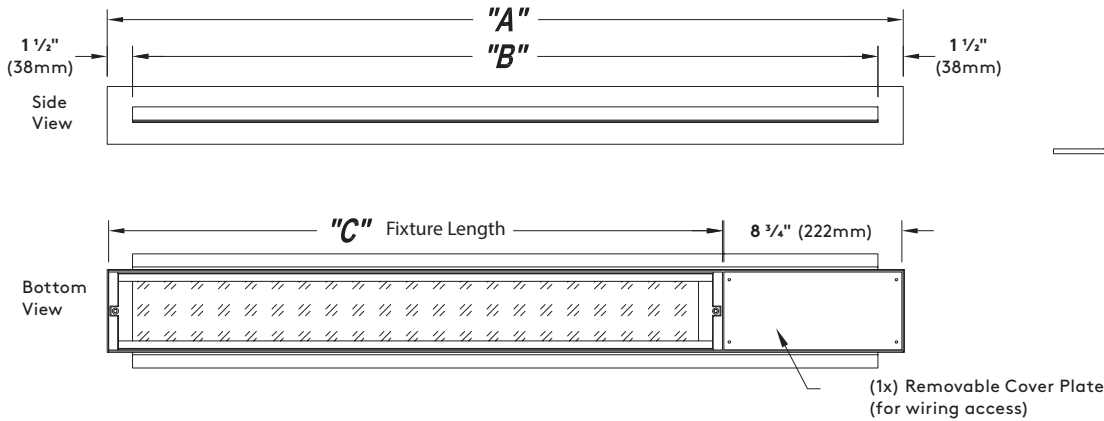
### Certifications and Compliance:

- NRTL - For Dry and Wet Locations (i.e. cULus; cCSAus)
- ARRA Compliant
- RoHS Compliant
- IP65 Rated
- IK10 Rated

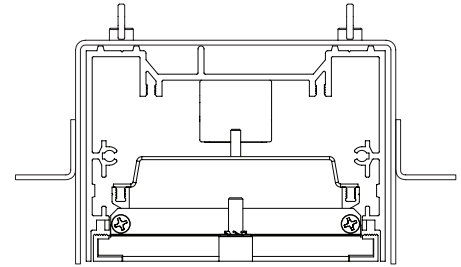
**Concrete Pour Mounting Details**

Mounting hardware and outlet box by others. 3' fixture shown as reference.

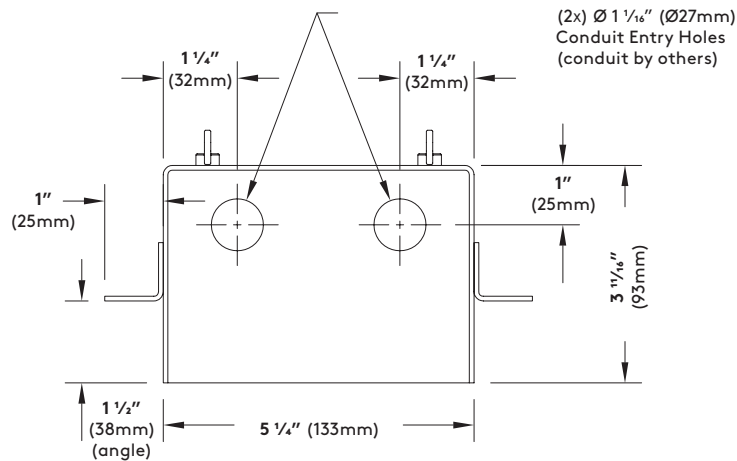
**L125-xxxx-xx-xx-MTB-003-xx-xx**



**L125 - Metal Box  
Concrete Pour (MTB)**



**L125 - Concrete Pour Metal Box Detail**

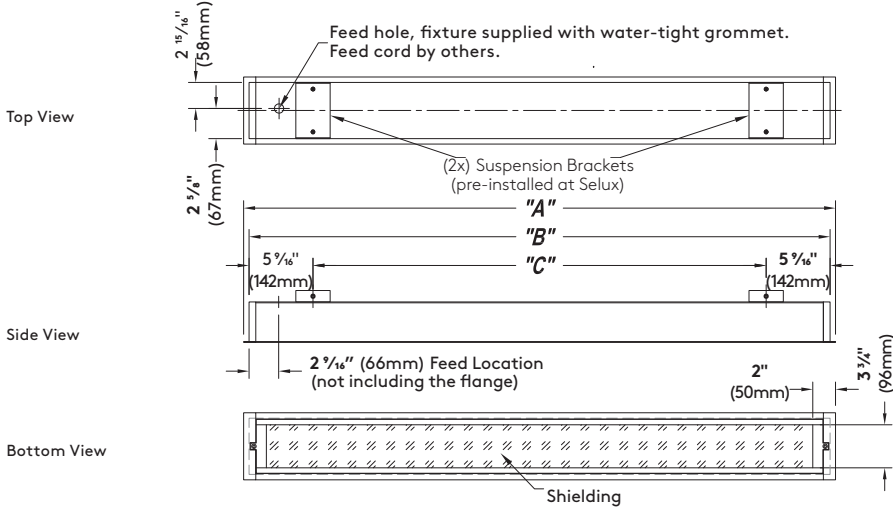


METAL BOX CONCRETE POUR (MTB) MOUNTING DIMENSIONS			
	1Bxx or 2Bxx		
	"A" Metal Box O.A.L.	"B" Flange Length	"C" Fixture
2 Foot Individual	3' - 1/2" (927mm)	1' - 11 1/2" (597mm)	1' - 3 3/8" (396mm)
3 Foot Individual	4' - 2 1/4" (1277mm)	3' - 11 1/16" (1196mm)	3' - 2 13/16" (985mm)

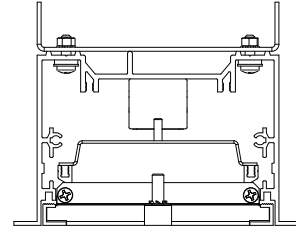
For other lengths, lamping, continuous runs or configurations please specify overall length (in feet), accessories desired and sketch/drawing of configuration. Selux will detail project drawings upon order and supply submittal drawings for approval. If you have any questions, contact Selux customer service or applications engineering for assistance (1-800-SELUX-CS).

Suspension Brackets (SH) and Threaded Stud (TS) Mounts

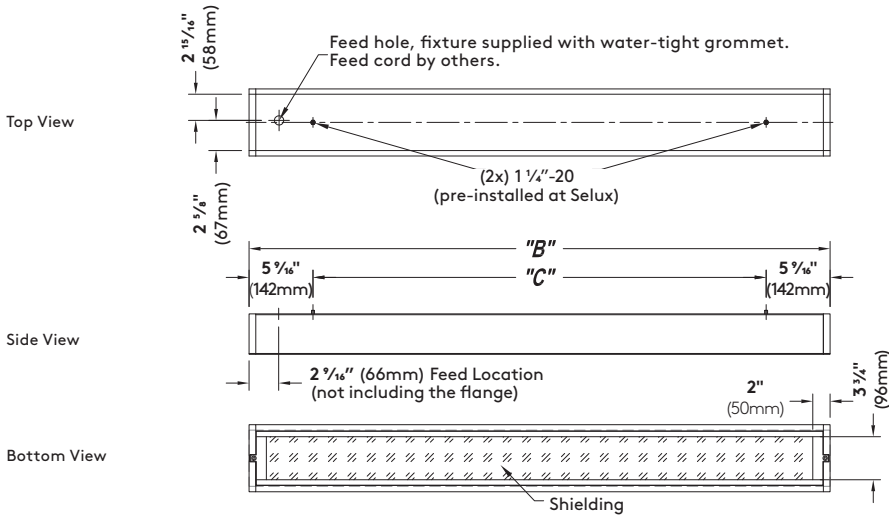
L125R1-xxxx-xx-xx-SH-004-xx-xx



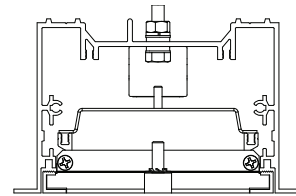
L125R1 - Suspension Bracket (SH) Mount



L125R2-xxxx-xx-xx-TS-004-xx-xx



L125R2 1/4"-20 Threaded Rod (TS) Mount

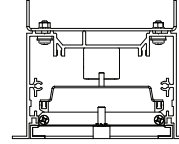
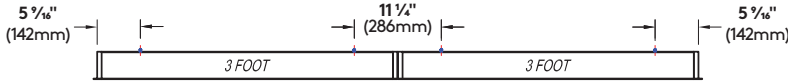


Suspension Bracket (SH) and Threaded Stud (TS) Mounting Dimensions			
	1Bxx or 2Bxx		
	"A" O.A.L. w/ Flange (L125R1 Only)	"B" Housing Length	"C" Suspension
2 Foot Individual	2' - 3 3/4" (705mm)	2' - 2 15/16" (681mm)	1' - 3 5/8" (396mm)
3 Foot Individual	3' - 3 3/4" (1009mm)	3' - 2 15/16" (985mm)	2' - 3 5/8" (701mm)
4 Foot Individual	4' - 3 3/4" (1314mm)	4' - 2 15/16" (1290mm)	2' - 3 5/8" (1006mm)

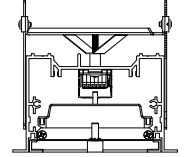
**Recessed Linear Run Mounting Details**

Nipple Connectors (NC) provide waterproof wiring between fixtures, connected in the field. Mounting hardware by others. For custom configurations and lengths please consult factory.

**L125R1-xxxx-xx-xx-TS-006-xx-xx**

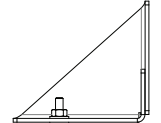
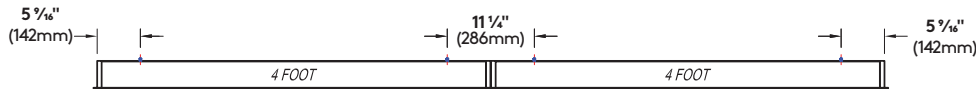


L125R1-2Bxx-xx-SH-xxxx-xx-xx



L125R1-1Bxx-xx-RC-xxx-xx-xx

**L125R1-xxxx-xx-xx-TS-008-xx-xx**



**L125R1-xxxx-xx-xx-TS-009-xx-xx**

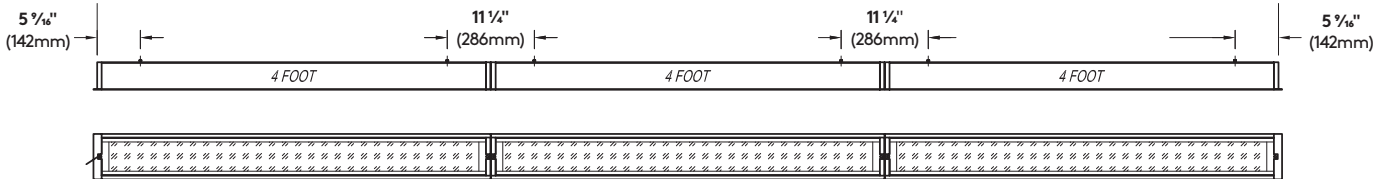


L125R1-1Bxx-xx-PM-xxx-xx-xx

**L125R1-xxxx-xx-xx-TS-010-xx-xx**



**L125R1-xxxx-xx-xx-TS-012-xx-xx**



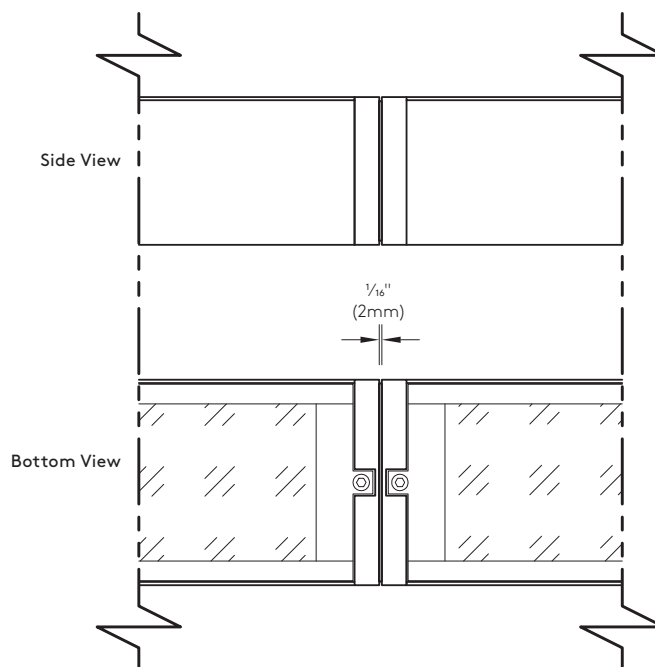
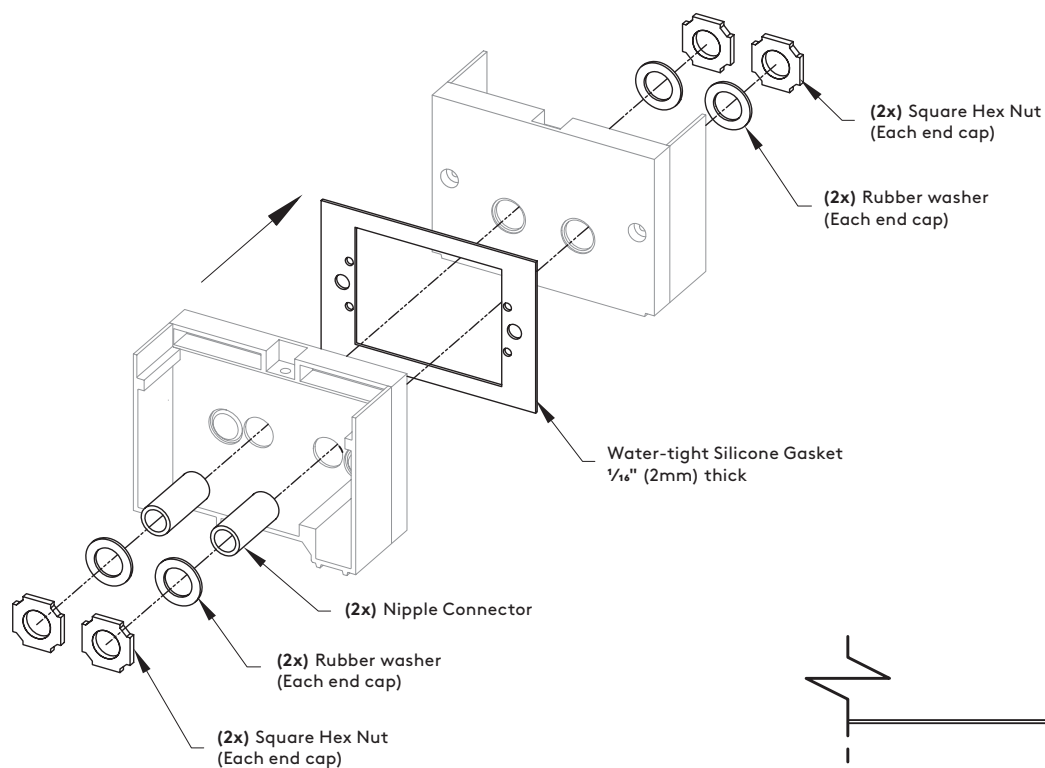
Suspension Bracket (SH) and Threaded Stud (TS) Perimeter Mount (PM) and Rotating Crossbar (RC) Mounting Dimensions				
	1Bxx or 2Bxx			
	"A" O.A.L. w/ Flange (L125R1 Only)	"B" Housing Length	"C" Suspension	"D" Suspension
6' Run	6' - 6 5/16" (1996mm)	6' - 5 5/8" (1972mm)	2' - 3 5/8" (701mm)	N/A
8' Run	8' - 6 5/16" (2606mm)	8' - 5 5/8" (2582mm)	N/A	3' - 3 5/8" (1006mm)
9' Run	9' - 9 7/16" (2982mm)	9' - 8 7/16" (2958mm)	2' - 3 5/8" (701mm)	N/A
10' Run	10' - 9 7/16" (3287mm)	10' - 8 1/2" (3263mm)	2' - 3 5/8" (701mm)	3' - 3 5/8" (1006mm)
12' Run	12' - 9 7/16" (3897mm)	12' - 8 1/2" (3873mm)	N/A	3' - 3 5/8" (1006mm)

For other lengths, lamping, continuous runs or configurations please specify overall length (in feet), accessories desired and sketch/drawing of configuration. Selux will detail project drawings upon order and supply submittal drawings for approval. If you have any questions, contact Selux customer service or applications engineering for assistance (1-800-SELUX-CS).

### Mounting Details

#### Nipple Connectors

Water-tight Nipple Connectors supplied for all run configurations.



**Drivers:**

**0-10V linear dimming (DIM)**

Luminaires supplied with drivers offering the capability of either normal switched operation or 0-10V dimming for linear dimming curve. Fixtures ship wired for dimming. For on/off functionality, simply cap the dimming leads. Minimum dimming level preset at factory to 1%.

**0-10V logarithmic dimming (DIL)**

Luminaires supplied with drivers for logarithmic dimming curve. Minimum dimming level preset at factory to 1%. For "dim to dark" (down to 0.1%), please consult factory.

**eldoLED ECOdrive DALI-2 dimming (DED)**

Luminaires supplied with ECOdrive DALI-2 dimming driver for logarithmic dimming curve. Minimum dimming level preset at factory to 1%. For "dim to dark" (down to 0.1%), please consult factory.

**LUTRON Ecosystem dimming (DE1)**

Luminaires supplied with Hi-Lume EcoSystem (4 wire, digital link) dimming driver programmed for Constant Current Reduction (CCR). Minimum dimming level down to 1% withi SoftOn/FadeToBlack.

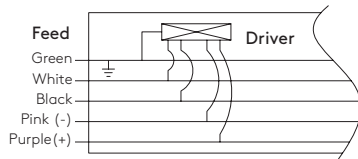
\* For control recommendation, please contact driver manufacturer.

Light Engine	Driver Quantity	Driver Quantity			RUN
		2 ft.	3 ft.	4 ft.	
1Bxx	DIM, DIL, and DED drivers	1	1	1	Approximately 1 driver per 4 ft.
	DE1 drivers	1	1	1	Consult Factory
2Bxx	DIM, DIL, and DED drivers	2	2	2	Approximately 2 drivers per 4 ft.
	DE1 drivers	2	2	2	Consult Factory

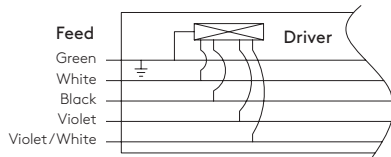
\*For inrush and control current, please refer to the driver manufacturers' spec sheets.

**Wiring Diagrams**

- 0-10V linear (DIM)
- 0-10V logarithmic eldoLED ECOdrive (DIL)
- DALI-2 logarithmic eldoLED ECOdrive (DED)
- 0-10V linear eldoLED SOLOdrive (D01)
- 0-10V logarithmic eldoLED SOLOdrive (DL01)



**Lutron EcoSystem (DE1)**



Standard Wiring supplied for all drivers	Green = Ground White = Neutral (120V/277V/347V) or L2 (240V) Black = Hot/L1 (120V-347V)
<b>- The following wire(s) are in addition to the standard above -</b>	
DIM, DIL, DED, D01, DL01	Pink = (-) DALI-2 or 0-10V Dimming Control Purple = (+) DALI-2 or 0-10V Dimming Control
DE1	Violet = "E1" Digital Link Dimming Control Violet/White = "E2" Digital Link Dimming Control

**Fuse (FS)** - Fusing, luminaires supplied with a in-line fuse located on the hot wire for each feed. (supplied with an 8A slow burn fuse).

**Separate Switching (SS)** - Luminaires available with separately switched 4' (nominal) sections starting at 7' and up. Luminaire is intended to be wired to the same panel/breaker (not intended for Emergency use).

- \* All separately switched (non-EM) circuits within an individual luminaire, linear run, or configuration must be connected to the same branch circuit on-site.
- \* To specify this option, the number of separately switched sections and locations of these sections must be provided at time of order.
- \* For Separate Switching with external sensors (by others), please consult factory.

**Custom Switching (CS)** - For project-specific switching requirements, please consult factory.

---

**Emergency Circuit (EC)** - EC luminaires are intended to be wired to separate panels/breakers for emergency use.

For 2' to 6' nominal luminaires, the entire fixture is wired for operation on emergency circuit.

For 7' and up nominal luminaires, the first 4' nominal length is wired for operation by a separate EM circuit by default to meet the required "Life Safety Code" (NFPA 101).

- \*If a different configuration is needed please consult the factory.
- \*For EC with external sensors (by others), please consult factory.

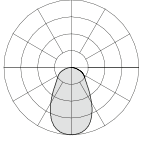
**Cold Weather Emergency Battery (CEM)** - Luminaries with integral cold-weather emergency battery option are provided with factory installed emergency battery and test switch button located on plate separate from fixture. For Runs, please indicate which 4' section is intended for emergency use, test switch will always be located on a separate plate.

In the event of an emergency, CEM will illuminate a 4' fixture at 10W (constant) for 90 minutes at -20°C. Recharge time of 24 hours. Available with DIM driver only, for use with UNV.

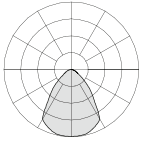
If a different configuration is needed, please consult factory.

**Photometry**

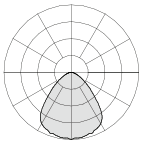
Below photometric values are based on 4' fixtures at 4000K, using DIM driver. For other light engines or CCTs, please use multipliers. Complete Photometrics can be found online.



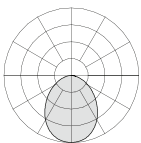
LI - Clear Lens with Optimized LED Inlay				
Light Engine	Lumens per 4 foot	Lumens per foot	Inputs watts per foot	lm/W
1B35	3552	888	9.3	95
2B35	6440	1610	18.3	88



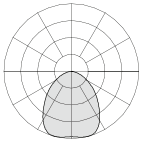
MI - Clear Lens with Microprism Inlay				
Light Engine	Lumens per 4 foot	Lumens per foot	Inputs watts per foot	lm/W
1B35	3444	861	9.3	93
2B35	6244	1561	18.3	85



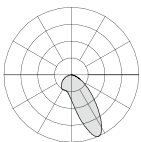
PC - Prismatic Lens				
Light Engine	Lumens per 4 foot	Lumens per foot	Inputs watts per foot	lm/W
1B35	3704	926	9.3	100
2B35	6716	1679	18.3	92



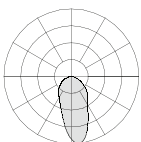
SD - Satine Lens				
Light Engine	Lumens per 4 foot	Lumens per foot	Inputs watts per foot	lm/W
1B35	3672	918	9.3	99
2B35	6656	1664	18.3	91



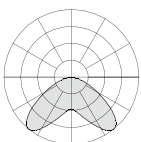
CNB - Clear Lens SMO Symmetric				
Light Engine	Lumens per 4 foot	Lumens per foot	Inputs watts per foot	lm/W
1B35	3472	868	9.3	93
2B35	6292	1573	18.3	86



CA2 - Clear Lens LMO Asymmetric 20° Wall Washer				
Light Engine	Lumens per 4 foot	Lumens per foot	Inputs watts per foot	lm/W
1B35	3408	852	9.3	92
2B35	6184	1546	18.3	84

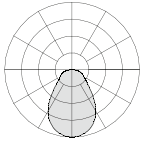


CA5 - Clear Lens LMO Asymmetric 5° Wall Grazer				
Light Engine	Lumens per 4 foot	Lumens per foot	Inputs watts per foot	lm/W
1B35	3460	865	9.3	93
2B35	6272	1568	18.3	86

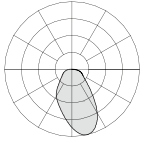


CBW - Clear Lens LMO Batwing				
Light Engine	Lumens per 4 foot	Lumens per foot	Inputs watts per foot	lm/W
1B35	3292	823	9.3	88
2B35	5972	1493	18.3	82

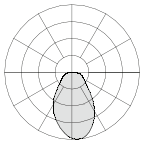
Photometry



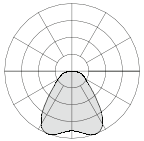
DNB - Diffuse Lens LMO Symmetric				
Light Engine	Lumens per 4 foot	Lumens per foot	Inputs watts per foot	lm/W
1B35	3292	823	9.3	88
2B35	5972	1493	18.3	82



DA2 - Diffuse Lens LMO Asymmetric 20° Wall Grazer				
Light Engine	Lumens per 4 foot	Lumens per foot	Inputs watts per foot	lm/W
1B35	3072	768	9.3	83
2B35	5572	1393	18.3	76



DA5 - Diffuse Lens LMO Asymmetric 5° Wall Grazer				
Light Engine	Lumens per 4 foot	Lumens per foot	Inputs watts per foot	lm/W
1B35	3076	769	9.3	83
2B35	5580	1395	18.3	76



DBW - Diffuse Lens LMO Batwing				
Light Engine	Lumens per 4 foot	Lumens per foot	Inputs watts per foot	lm/W
1B35	2960	740	9.3	80
2B35	5372	1343	18.3	73

L125 CCT Multiplier	
4000K	1.000
3500K	0.972
3000K	0.963
2700K	0.931

CCT multiplier applies to the photometry, IES files, and per foot values listed on pages 1, 9, and 10 (light engine).

Light engine multiplier supplied for per foot values listed on pages 1, 9, and 10 (light engine).

L125 Light Engine Multiplier		
1B35 to	1B45	1.304
	1B40	1.167
	1B35	1.000
	1B30	0.877
	1B25	0.730
	1B20	0.587
2B35 to	2B45	1.275
	2B40	1.152
	2B35	1.000
	2B30	0.876
	2B25	0.743
	2B20	0.597