

Date: \_\_\_\_\_ Customer: \_\_\_\_\_

Project: \_\_\_\_\_

Type: \_\_\_\_\_ Qty: \_\_\_\_\_



ELO Bollard Wood



Order Code: \_\_\_\_\_ - \_\_\_\_\_ - \_\_\_\_\_ - \_\_\_\_\_ - \_\_\_\_\_ - \_\_\_\_\_ - \_\_\_\_\_ - \_\_\_\_\_

	Series	ELFBW ELO Flat Top Bollard Wood		ELDBW ELO Domed Top Bollard Wood							
	Bollard Base Height	2.5 2.5 ft	3 3 ft	3.5 3.5 ft					*Add head for overall height (see page 3).		
	Optic	T1 Tritec Forward	TS Tritec Symmetric	TA¹ Tritec Asymmetric					¹Asymmetric optics not available with Gold Reflector light engines.		
	Light Engine	S1G1 Silver Reflector, 24W, Single Stack	S1G2 Silver Reflector, 50W, Double Stack	G1G1 Gold Reflector, 24W, Single Stack	G1G2 Gold Reflector, 50W, Double Stack					*Based on "TS" Optics.	
	CCT	22* 2200K	27* 2700K	30 3000K	35* 3500K	40 4000K	50* 5000K			*Consult factory.	
	Metal Finish	WH White	BK Black	BZ Bronze	BL Semi-Matte Black	SV Silver	SP Specify Premium Color				
	Wood Finish	WS1 Mustard Seed	WS2 Honeycomb	WS3 Butterscotch	WS4 Barnwood	WS5 Turmeric	WS6 Cinnamon	WS7 Coffee	WS8 Driftwood		
	Voltage	UNV 120-277V	120² 120V	240² 240V	277² 277V	347³ 347V	480³ 480V				²Specify for HL option. ³Equipped with step down transformer Wattage increases nominal 10%.
	Options	DM Dimming (0-10V)	REC⁴ GFCI Receptacle with weather-proof cover	REC2⁴ GFCI Receptacle with padlockable in-use cover	REC3⁴ USB & Duplex Receptacle with weather-proof cover	REC4⁴ USB & Duplex Receptacle with weatherproof padlockable in-use cover	HS 180° House Shield	BP Blue Prism Ring Optic Accessory	RP Red Prism Ring Optic Accessory	*See page 5 for details.	

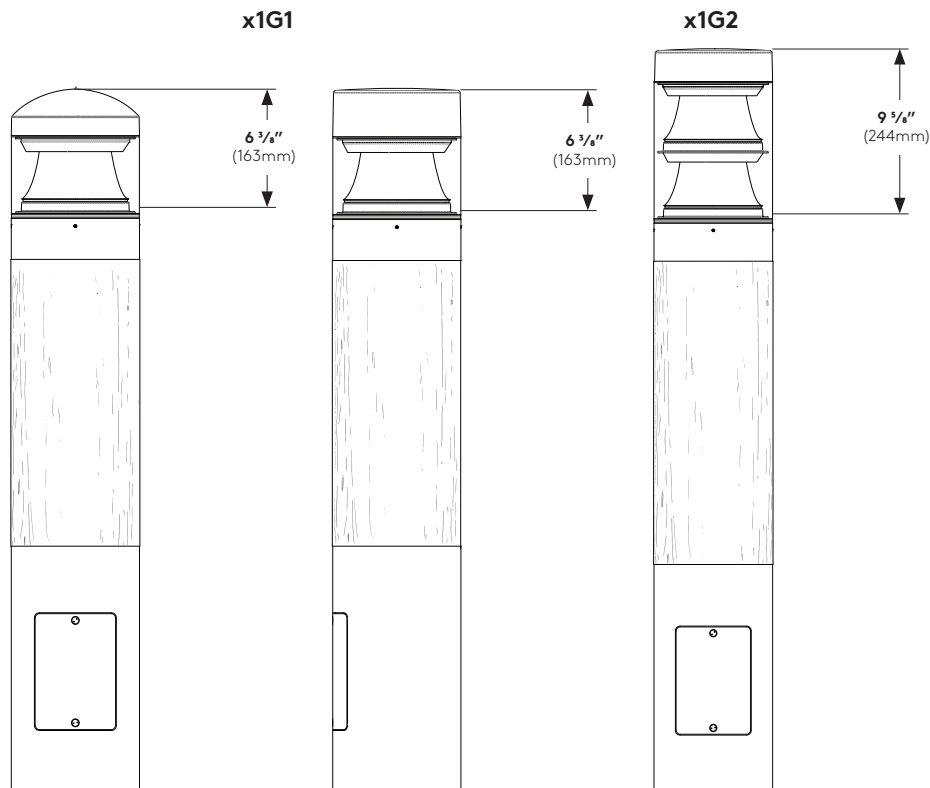
Product Modifications

Please list modification requirements for review by factory:

Approvals

Date: \_\_\_\_\_

## ELXB-XX-TS-x1Gx



## Specifications

**Fixture Housing** - Die cast low-copper aluminum and Accoya wood fixture body provides corrosion resistance in marine environments.

**Gasketing** - Continuous gaskets provide weather-proofing, dust, and insect control between castings.

**LED Array** - Mid-power LEDs mounted to metal core PCB and attached to external heatsink for maximum thermal performance and life. CCT tolerance within a 3 step bin and provided with a minimum CRI of 80. LED light engine has a reported lumen maintenance of 93% at 50,000 hours. L70 calculated greater than 100,000 hours.

**LED Optics** - Symmetric or Asymmetric distributions created by conical textured reflector and patterned acrylic reveal with alternate LED PCB layouts. Forward, Symmetric, and Asymmetric distribution types available. An indirect lighting effect spreads brightness evenly and improves visual appearance.

**Surge Protector** - Independent surge protection device designed to protect luminaire from electrical surge up to 20kA standard.

**Diffuser** - Clear, UV stabilized, cast polycarbonate tube with minimum wall thickness of 0.125" (3mm).

**LED driver** - LEDs are driven by RoHS compliant constant current programmable LED driver. Driver includes 0-10V dimming to 10% and meets the requirements of IP66.

**Exterior Luminaire Finish** - Selux utilizes a high quality Polyester Powder Coating. All Selux luminaires and poles are finished in our Tiger Drylac certified facility and undergo a five stage intensive pretreatment process where product is thoroughly cleaned, phosphated and sealed. Selux powder coated products provide excellent salt and humidity resistance as well as ultraviolet resistance for color retention. All products are tested in accordance with test specifications for coatings from ASTM and PCI.

Standard exterior colors are White (WH), Black (BK), Bronze (BZ), Semi-Matte Black (BL), and Silver (SV). Selux premium colors (SP) are available, please specify from your Selux color selection guide.

**5 Year Limited LED Luminaire Warranty -**

Selux offers a 5 Year Limited Warranty to the original purchaser that the Elo Bollard Wood luminaire shall be free from defects in material and workmanship for up to five (5) years from date of shipment. This limited warranty covers the LED driver and LED array when installed and operated according to Selux instructions. For details, see "Selux Terms and Condition of Sale."

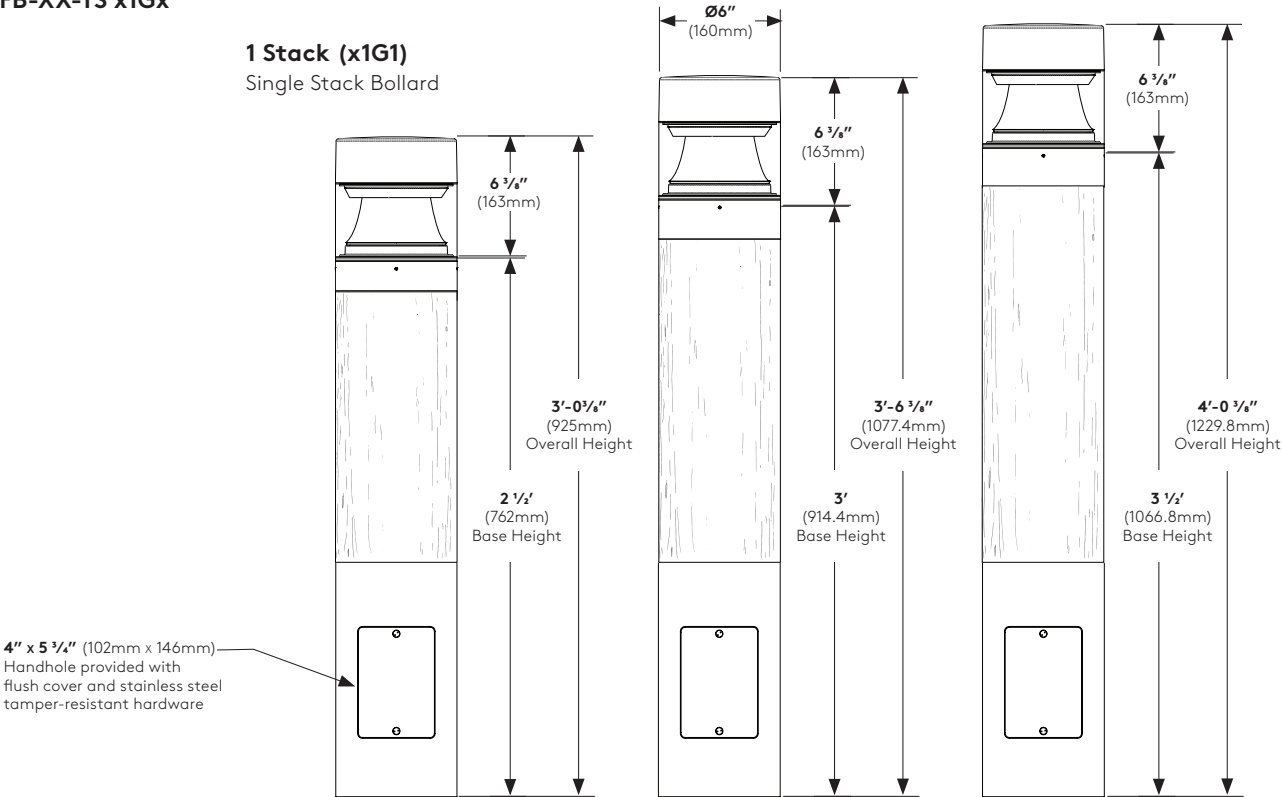
**Listings and Ratings:** Tested to NRTL Wet Location and IK07 standards, and IESNA LM-79-08 standards. LEDs tested to LM-80 standards. Luminaire and LED tested at 25°C (77°F) ambient temperature.

**Visit [selux.us](http://selux.us) for our LED End of Life recycling policy.**

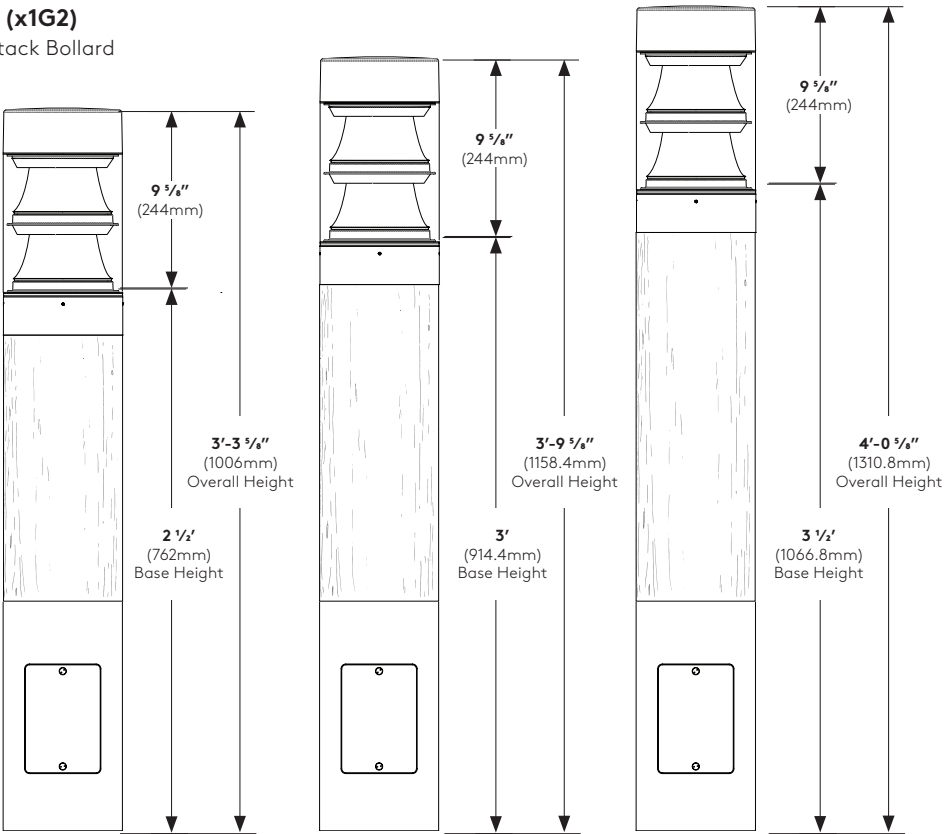
Mounting

ELFB-XX-TS x1Gx

1 Stack (x1G1)  
Single Stack Bollard



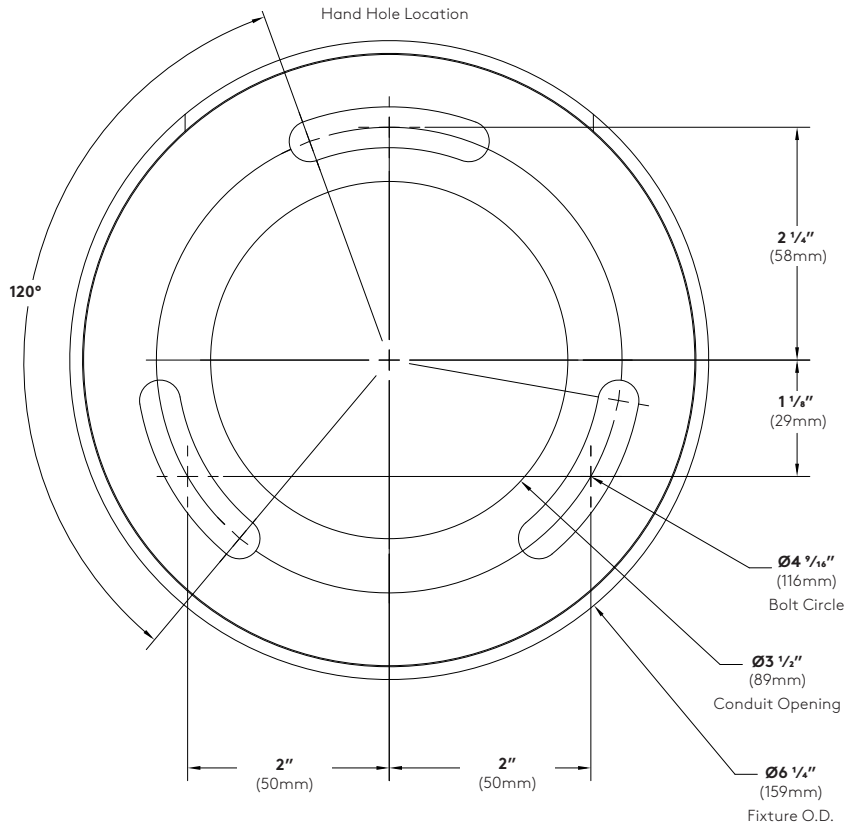
2 Stack (x1G2)  
Double Stack Bollard



## Mounting Information

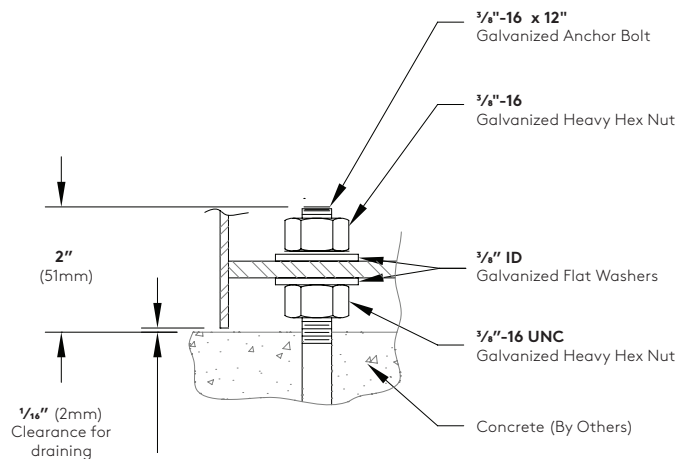
### Note:

1. Bollard orientation is critical, rod and hand hole locations are critical.
2. Locate single Bolt at handhole location.
3. Adequate drainage must be proved in concrete foundation.
4. Conduit should be stubbed up above the concrete footing.



### Bolt Circle Detail (Not to Scale)

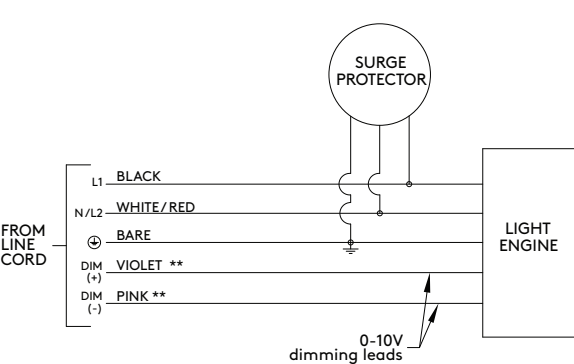
Use caution when setting anchor bolts. Bolt must be vertically straight and centered on dimensions shown.



Wiring Diagrams

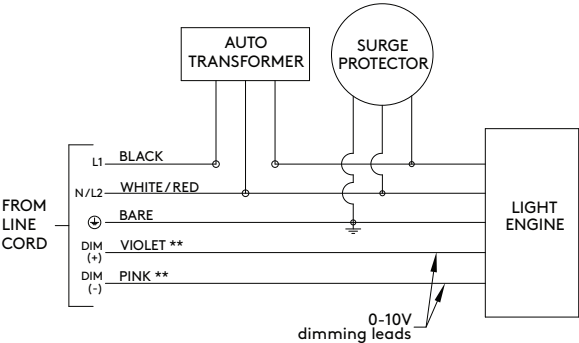
Standard Wiring (120V-277V)

\*\*When dimming is not required cap dimming wires.



Standard Wiring (347/480V with Step-down Transformer)

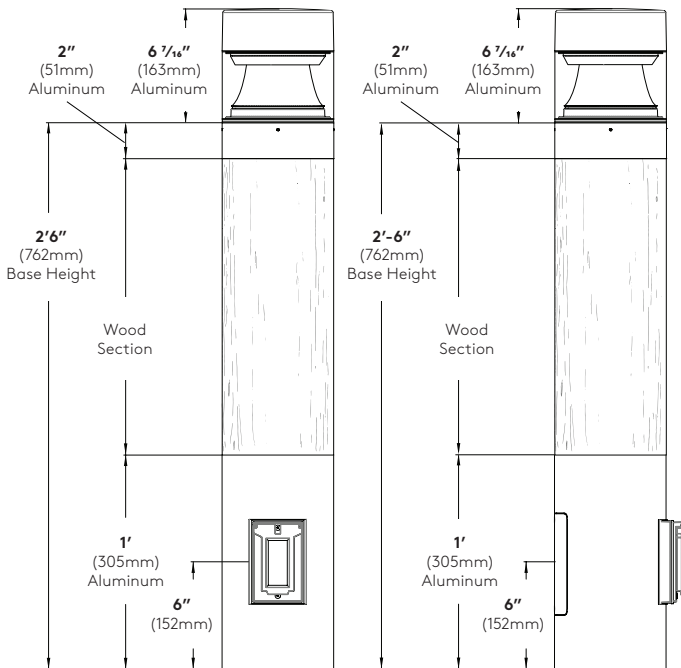
\*\*When dimming is not required cap dimming wires.



Wire Designation Table		
Source Voltage (VAC)	Wire Color	Wire Designation
120V, 277V, or 347V	Black	L1
	White	Neutral
208V, 240V, or 480V	Black	L1
	Red	L2
UNV (120V-277V)	Black	L1
	White	Neutral (120/277V) or L2 (208/240V)

## Optional Accessories

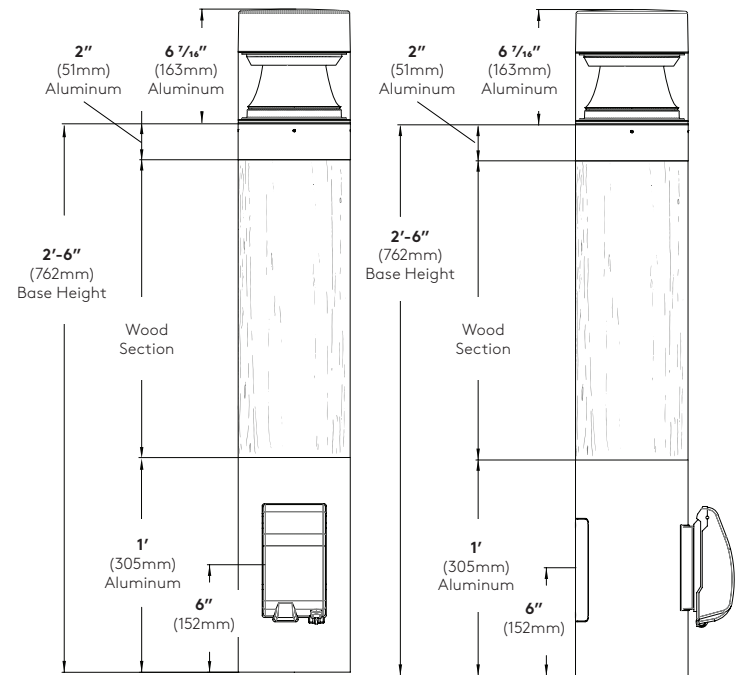
REC and REC3



**GFCI Duplex Receptacle (REC)** - 120V 15A GFCI duplex receptacle with weatherproof, self-closing cover; located 6" (152mm) o.c. from base of pole, in-line with hand hole. Receptacle is intended only for portable tools or other portable equipment to be connected to outlet only when attended by operating personnel (120V only).

**USB & GFCI Duplex Receptacle (REC3)** - 120V 15A GFCI duplex receptacle with USB combination ports. (1) USB Type-A and (1) USB Type-C port share 2.0A charging capacity between both ports. Includes weatherproof, self-closing cover; located 6" (152mm) o.c. from base of pole, in-line with hand hole. Receptacle is intended only for portable tools or other portable equipment to be connected to outlet only when attended by operating personnel.

REC2 and REC4



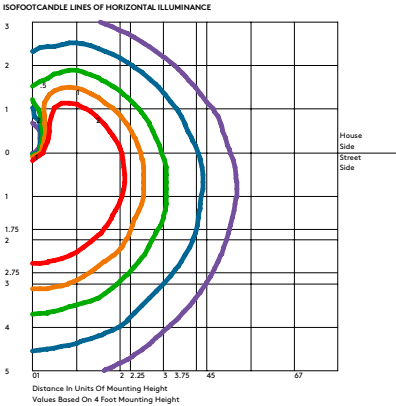
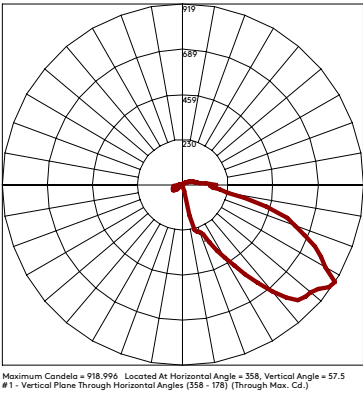
**Duplex GFCI Receptacle (REC2)** - 120V 15A GFCI duplex receptacle with weatherproof, self-closing, padlockable in-use cover; located 6" (152mm) o.c. from base of pole, in-line with hand hole. Receptacle is intended only for portable tools or other portable equipment to be connected to outlet only when attended by operating personnel (120V only).

**USB & GFCI Duplex Receptacle (REC4)** (not shown) - 120V 15A GFCI duplex receptacle with USB combination ports. (1) USB Type-A and (1) USB Type-C port share 2.0A charging capacity between both ports. Includes weatherproof, self-closing padlockable in-use cover; located 6" (152mm) o.c. from base of pole, in-line with hand hole. Receptacle is intended only for portable tools or other portable equipment to be connected to outlet only when attended by operating personnel.

Photometry

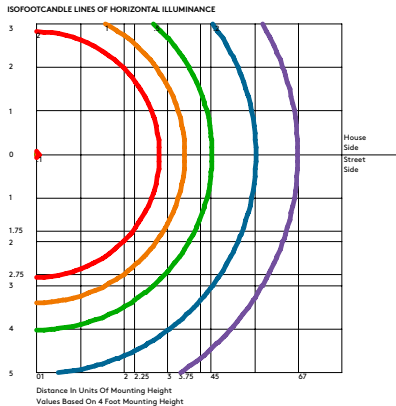
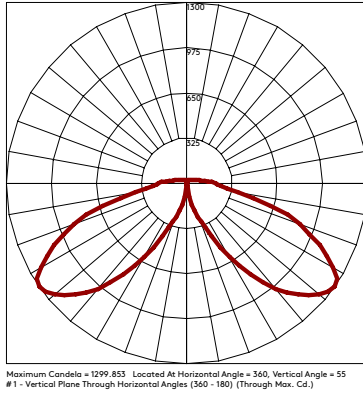
T1 / 24W LED / 3000K CCT

Catalog #: ELFB-X-T1-S1G2-30-XX-UNV  
Report #: 91155050  
Delivered Lumens: 1872lm  
Input Watts: 24W  
Efficacy: 78  
CCT: 3000K  
CRI (Ra): >80  
Maximum candela of 919 at 57.5° from vertical.  
IES Classification: Type IV  
Mounting Height: 4' (1.22 m)  
BUG Rating: B1-U3-G1  
Power Factor: 0.979  
Total Harmonic Distortion: 11%



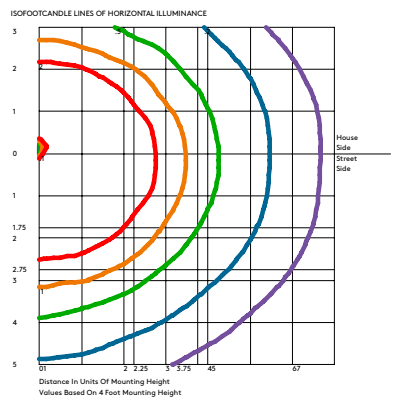
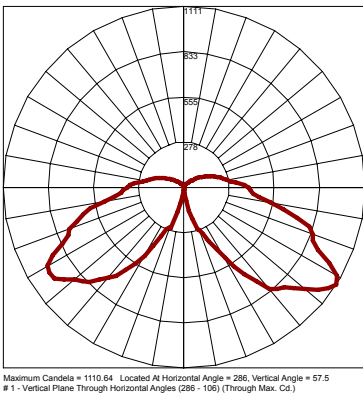
TS / 50W LED /3000K CCT

Catalog #: ELFB-X-TS-S1G2-30-XX-UNV  
Report #: 875150  
Delivered Lumens: 5200lm  
Input Watts: 50W  
Efficacy: 104  
CCT: 3000K  
CRI (Ra): >80  
Maximum candela of 1300 at 55° from vertical.  
IES Classification: Type V  
Mounting Height: 4' (1.22 m)  
BUG Rating: B2-U3-G2  
Power Factor: 0.979  
Total Harmonic Distortion: 11%



TA / 46W LED / 3000K CCT

Catalog #: ELFB-X-TA-S1G2-30-XX-UNV  
Report #: 911550  
Delivered Lumens: 4140 lm  
Input Watts: 46W  
Efficacy: 90  
CCT: 3000K  
CRI (Ra): >80  
Maximum candela of 1111 at 57.5° from vertical.  
IES Classification: Type IV  
Mounting Height: 4' (1.22 m)  
BUG Rating: B2-U3-G2  
Power Factor: 0.979  
Total Harmonic Distortion: 11%



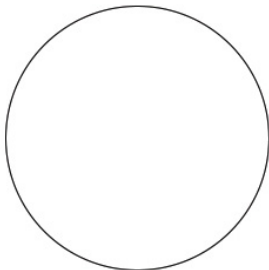
ELO Ballard Wood	
Multiplier Chart	
2200K	0.61
2700K	0.93
3000K	1.00
4000K	1.09
Gold Reflector	0.85
Blue/Red Prism Ring	0.88

Finish Options

All colors are polyester powder coat paint. Custom color or RAL color available by request that meet AAMA 2604 standard.

Metal Finishes

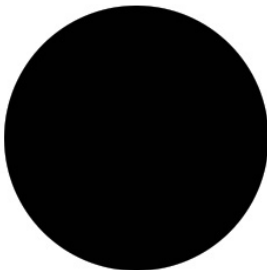
WH - White



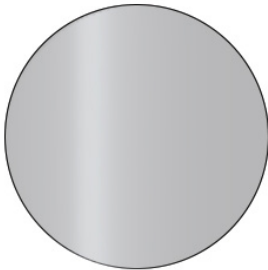
BK - Black



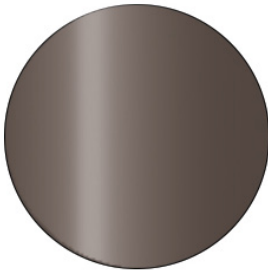
BL - Semi Matte Black



SV - Silver

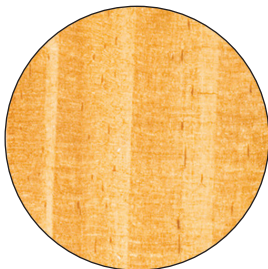


BZ - Bronze



Wood Finishes

WS1 - Mustard Seed



WS2 - Honeycomb



WS3 - Butterscotch



WS4 - Barnwood



WS5 - Turmeric



WS6 - Cinnamon



WS7 - Coffee



WS8 - Driftwood

