

Date: _____ Customer: _____

Project: _____

Type: _____ Qty: _____



M60 LED Direct Quickship



Order Code: QL60 - 1C35 - _____ - LW - F - _____ - WH - U - _____ - _____

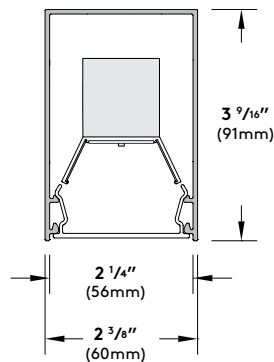
<u>QL60</u>	Series	QL60 M60 LED Direct Quickship			
<u>1C35</u>	Light Engine	1C35¹ 70lm/8.7W per foot		¹ Values calculated from a 4' fixture at 90 CRI, 3500K using LW Shielding and DIM driver.	
_____	CCT	930 3000K 90+ CRI	935 3500K 90+ CRI		
<u>LW</u>	Shielding	LW LED Optimized White Lens			
<u>F</u>	Mounting	F Surface Mount			
_____	Nominal Fixture Length	02 2'	04 4'	06 6'	08 8'
_____		<i>Individual fixtures and Runs are supplied in nominal lengths to ensure full, even illumination. See page 2 for additional details.</i>			
<u>WH</u>	Finish	WH White			
<u>U</u>	Voltage	U 120 through 277 50/60Hz capable			
_____	Driver	DIM² 0-10V 1% (Linear)	DIL² eldoLED 1% ECOdrive 0-10V (Logarithmic)	² See page 4 for full details	

Product Modifications

Please list modification requirements for review by factory:

Approvals





Construction:

Housing - Continuous, low copper 6063-T6 extruded aluminum profile with aluminum endcaps, available as individual fixtures or Runs.

Geartray - Low copper 6063-T6 extruded aluminum profile.

Shielding - Extruded, impact resistant acrylic snap-in lens:
- LED Optimized White Lens (LW)

Mounting(s) - Surface mounting (see page 3 for details).

Standard Luminaire lengths - All standard luminaires are supplied in nominal lengths to ensure full, even illumination. Runs are available in nominal 1' increments starting at the nominal 8' fixture length.

** Individual luminaires are not joinable in the field.

L60 Joiner(s) - Runs are supplied in multiple housings that are joined together in the field using the supplied L60 Joiner System. This allows ease of installation and ensures a uniform appearance (see page 5 for detail).

Weight: 2.4 lb. per foot

Electrical/Performance:

LED Light Engine - Brand-name mid-power LEDs create a high efficiency LED light engine able to provide a lumen maintenance of 95% at 25,000 hours and 90% at 60,000 hours at 25°C per TM-21 reports. Reported L70 greater than 60,000 hours.

Photometrics - Consult website or factory for IES Files. Independent photometric lumen measurement complies with IES LM-79-08 testing procedures. Due to the LED manufacturer's tolerances, the listed output has a ±5% tolerance. For outputs based on different optics or CCT, please see page 5 for details.

CCT - Available in 3000K and 3500K, tolerance within a 3-step MacAdam ellipse.

CRI - 90+.

All Drivers - High efficiency, constant current, soft start, Electronic Class 2 with a PFC>0.90. For more detailed information on the available drivers please see page 4.

Thermal Performance:

Ambient Operating Temperature - Luminaires suitable for maximum ambient temperature of 35°C (95°F) for all drivers.

Minimum ambient temperature of -20°C (-4°F) for DIM and DIL drivers.

Luminaire Finish:

Powder Coat - All Selux luminaires are finished in high quality polyester powder coating in our Tiger Drylac certified facility and are tested in accordance with test specifications for coatings from ASTM and PCI.

All products undergo a five stage intensive pretreatment process where product is thoroughly cleaned, phosphated, and sealed. Selux powder coated products provide excellent salt and humidity resistance as well as ultraviolet resistance for color retention.

Standard interior Quickship color is White (WH).

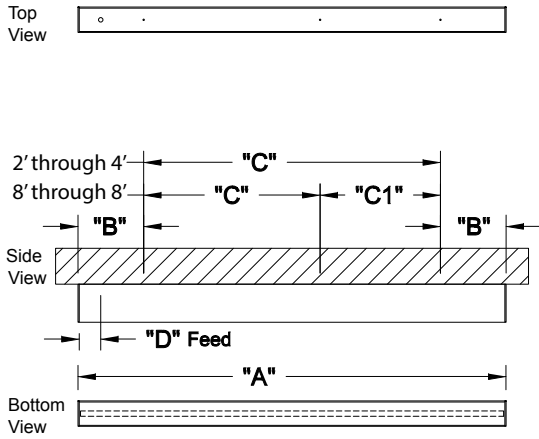
Warranty:

5 Year Limited LED Luminaire Warranty - Selux offers a 5 Year Limited Warranty to the original purchaser that the M60 series LED luminaire shall be free from defects in material and workmanship for up to five (5) years from date of shipment. This limited warranty covers the LED driver and LED light engine when installed according to Selux instructions and operated within the Ambient Temperature. For additional details and exclusions, see "Selux Terms and Condition of Sale."

Certifications and Compliance:

NRTL - For Dry location
(i.e. cULus; cCSAus)
ADA Compliant
ARRA Compliant
RoHS Compliant

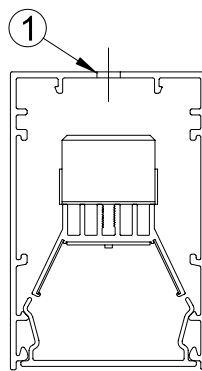
Surface Mounting (F) - 2' to 8'



Surface Mount (F) - Dimensions										
Nominal Length	"A" Housing Length		* "B" (Reference) End Suspensions		"C" Mid Suspension		"C1" Mid Suspension		"D" Feed Location	
	Feet/Inch	mm	Feet/Inch	mm	Feet/Inch	mm	Feet/Inch	mm	Feet/Inch	mm
02 (2')	2' - 1/4"	616	0' - 1 1/8"	41	0' - 1 1/8"	41	1' - 6"	457	0' - 1 1/8"	29
04 (4')	4' - 1/4"	1225	0' - 6 1/8"	156	0' - 6 1/8"	156	3' - 0"	915	0' - 2 1/8"	54
06 (6')	6' - 1/4"	1835	0' - 6 1/8"	156	0' - 6 1/8"	156	5' - 0"	1524	0' - 2 1/8"	54
08 (8')	8' - 1/4"	2445	0' - 6 1/8"	156	0' - 6 1/8"	156	7' - 0"	2134	0' - 2 1/8"	54

*Dimension(s) rounded to the nearest 1/16" with a ± 1/16" (1mm) tolerance

Surface Mount (F)



* Please note: Fixture does not cover a 4x4 J-Box

1. Ø 3/16" Mounting hole drilled at the factory (mounting hardware to code by others).

Drivers:

0-10V linear dimming (DIM)

Luminaires supplied with drivers offering the capability of either normal switched operation or 0-10V dimming for linear dimming curve. Fixtures ship wired for dimming. For on/off functionality, simply cap the dimming leads. Minimum dimming level preset at factory to 1%.

0-10V logarithmic eldoLED ECOdrive dimming (DIL)

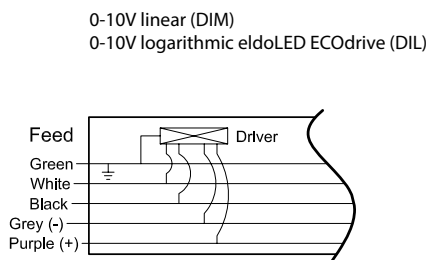
Luminaires supplied with drivers offering the capability of either normal switched operation or 0-10V dimming for logarithmic dimming curves. Fixtures ship wired for dimming. For on/off functionality, simply cap the dimming leads. Minimum dimming level preset at factory to 1%.

*For control recommendations, please contact driver manufacturer.

	Driver Quantity				RUN
	2'	4'	6'	8'	
DIM and DIL	1	1	1	1	Approximately 1 driver per 4'

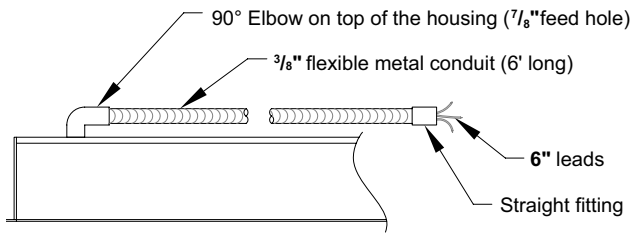
*For inrush and control current, please refer to the driver manufacturers' spec sheets.

Wiring Diagrams

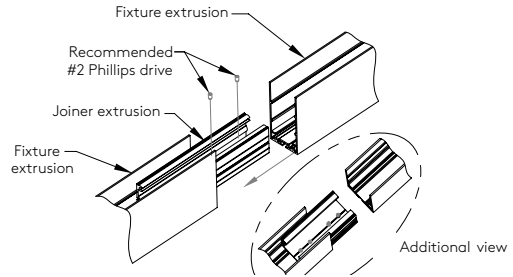


Standard Wiring supplied for all drivers.	Green = Ground White = Neutral Black = Hot
-The following wire(s) are in addition to the standard above-	
DIM & DIL	Grey = (-) 0-10V Dimming control Purple = (+) 0-10V Dimming control

Flex Whip - standard for FF mounting

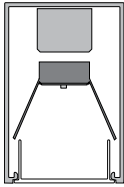


Joiner System - standard for Runs and Configurations

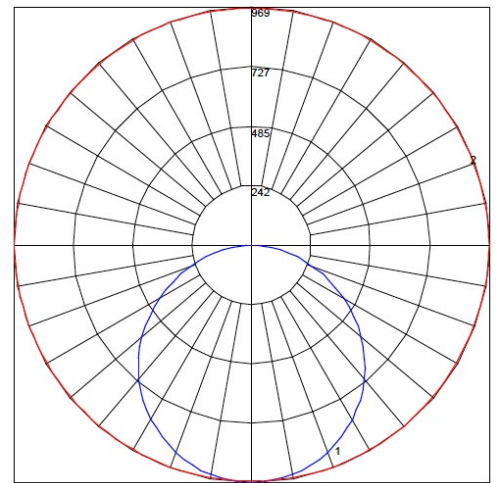


Photometry

LW Optics / 35W LED / 3500K CCT



Catalog #: L60-1C35-935-LW-X-04-XX-U
 Report #: 11685012.01
 Delivered Lumens: 2804
 Input Watts: 35.3
 Efficacy: 79lm/W
 CCT: 3500K
 CRI: 93



Maximum Candela = 969.085 Located At Horizontal Angle = 0, Vertical Angle = 2.5
 # 1 - Vertical Plane Through Horizontal Angles (0 - 180) (Through Max. Cd.)
 # 2 - Horizontal Cone Through Vertical Angle (2.5) (Through Max. Cd.)

M60 Direct	
CCT Multiplier	
3500K	1.00
3000K	0.96
CRI Multiplier	
90+ CRI	1.00
Lens Multiplier	
LW	1.00

CCT multipliers apply to the photometry, IES files, and per foot values listed on page 1 (light engine).

Light engine and lens multiplier supplied for per foot values listed on page 1 (light engine).