

Date: _____ Customer: _____
 Project: _____
 Type: _____ Qty: _____



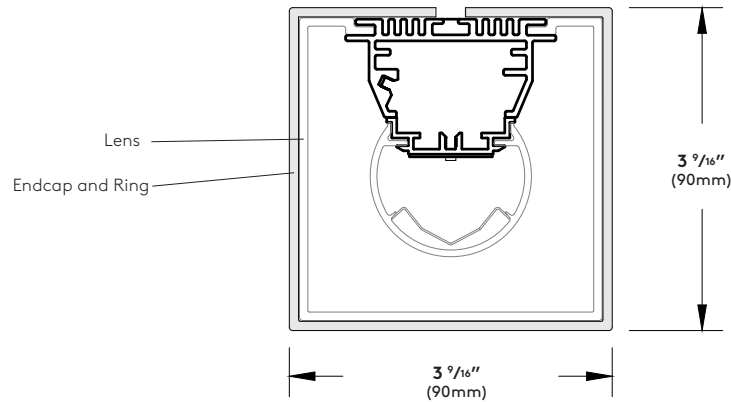
Purelight LED
 Square
 with BIOS SkyBlue®
 Technology



Order Code: PL9LS - _____ - SD - _____ - _____ - _____ - _____ - _____ - _____ - _____

<u>PL9LS</u>	Series	PL9LS Purelight LED Square								
	Light Engine	1S6¹ 812lm/ 11.5W per foot	1S5¹ 719lm/ 10.3W per foot	1S4¹ 651lm/ 8.8W per foot	1S3¹ 603lm/ 7.6W per foot	1S2¹ 485lm/ 6.2W per foot	1S1¹ 350lm/ 4.9W per foot	¹ Values calculated from a 4' fixture @ 3500K + 490nm using DM driver.		
	CCT	30 2700K + 490nm	35 3000K + 490nm	40 3500K + 490nm						
<u>SD</u>	Shielding	SD Satine lens								
	Mounting	C Cable	F Surface Mount (wall/ceiling)							
	Nominal Fixture Length	02 2 ft.	03 3 ft.	04 4 ft.	06 6 ft.	08 8 ft.	RUN² Runs (over 8') available in nominal whole feet made of 3' and 4' sections	² Runs only available with Cable Mount. Consult factory for Surface Mount Runs.		
	Endcap Finish	WH White	BL Semi-Matte Black	SV Silver	PO Polished Clear Coated	SP³ Specify Premium Color	³ Consult factory for lead time ⁴ Custom colors are available, Please consult factory			
	Voltage	1 120 Volt	2 277 Volt	U 120 through 277 50/60hz capable						
	Driver	Static Control			OR	Dynamic Control			⁵ See page 5 for full details	
		DM⁵ eldoLED 1% SOLOdrive 0-10V (Linear)	DML⁵ eldoLED 1% SOLOdrive 0-10V (Logarithmic)	DLL⁴ eldoLED DUALdrive DALI (Logarithmic)		DYN⁵ 0-10V (Linear) driver paired with Bio-Dimming Module	DYL⁵ 0-10V (Logarithmic) driver paired with Bio-Dimming Module	DYD⁵ DALI (Logarithmic) driver paired with Bio-Dimming Module		
		DC2 Lutron 1% 2-Wire (consult factory)	DE1 Lutron 1% Eco-System (consult factory)	DC5 Lutron 5% 5-Series (consult factory)		DY1 Lutron EcoSystem driver paired with Bio-Dimming Module (consult factory)	DY2 Lutron 2-Wire driver paired with Bio-Dimming Module (consult factory)	DY5 Lutron 5-Series driver paired with Bio-Dimming Module (consult factory)		
	Fixture Options	DL⁶ Damp Location Rated	FS⁶ In-line Fuse	SS⁶ Separate Switching						⁶ See page 6 for full details
	Emergency Options	EC⁶ UL924 Compliance for Emergency Wiring		EMR Remote Micro Inverter (consult factory)						





Construction:

Housing - White powder coated, low copper 6063-T6 extruded aluminum profile available as Individual fixtures (up to 8') or Runs.

Geartray - Low copper 6063-T6 extruded aluminum profile.

Shielding - Square Satine lens with diffusion optics provides luminous lines of diffuse light. Lens made from impact resistant PMMA (acrylic).

End Cap - Die cast aluminum endcap, powder coated or polished, clear coated finish, designed for toolless access to the geartray (cable mount).

Mounting(s) - 1/8" Aircraft Cable (48" maximum from ceiling to top of fixture), Surface mounting (wall or ceiling).

** Cables are adjustable for individual fixtures, however Cable and Wall mountings may not be symmetrical for Runs due to the use of modular housing lengths. If symmetrical suspensions are required please consult the factory.

Standard Luminaire lengths - All standard luminaires are supplied in nominal lengths to ensure full, even, illumination.

** Individual luminaires are not joinable in the field.

Runs - Runs over 8' are available in 1' increments (made up of 3' and 4' sections) for cable mount fixtures. There will be a joiner ring every 3' or 4' depending on the length. Cables are fixed to rings. For Runs with wall or surface mount, consult factory.

Weight - 2.1 lb. per ft.

Electrical/Performance:

LED Light Engine - Brand-name monochromatic mid-power LEDs combined with BIOS SkyBlue® Technology.
2700K + BIOS 490nm for nominal 3000K
3000K + BIOS 490nm for nominal 3500K
3500K + BIOS 490nm for nominal 4000K

Photometrics - Consult website or factory for IES Files. Independent photometric lumen measurement complies with IES LM-79-08 testing procedures. Due to the LED manufacturer's tolerances, the listed output has a ±5% tolerance.

All Drivers - High efficiency, constant current, soft start, Electronic Class 2 with a PFC>0.90. For more detailed information on the available drivers please see page 5.

Thermal Performance:

Ambient Operating Temperature - Luminaires are suitable for maximum ambient temperature of 35°C (95°F) for all drivers.

Luminaires are suitable for minimum ambient temperatures of -40°C (-40°F) for DM, DML, DLL, DYN, DYL, and DYD drivers.

Luminaire Finish:

Powder Coat - All Selux luminaires are finished in high quality polyester powder coating in our Tiger Drylac certified facility and are tested in accordance with test specifications for coatings from ASTM and PCI.

All products undergo a five stage intensive pretreatment process where product is thoroughly cleaned, phosphated, and sealed. Selux powder coated products provide excellent salt and humidity resistance as well as ultra violet resistance for color retention.

Standard interior color for Purelight LED is White (WH), Semi-Matte Black (BL), and Silver (SV). Polished clear coated (PO) or Selux premium colors (SP) for endcap finish are available, please specify from your Selux color selection guide.

Warranty:

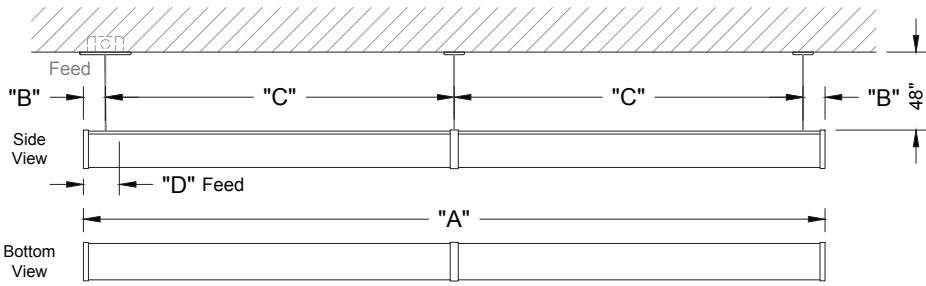
5 Year Limited LED Luminaire Warranty - Selux offers a 5 Year Limited Warranty to the original purchaser that the Purelight LED luminaire shall be free from defects in material and workmanship for up to five (5) years from date of shipment. This limited warranty covers the LED driver and LED light engine when installed according to Selux instructions and operated within the Ambient Temperature. For additional details and exclusions, see "Selux Terms and Condition of Sale."

Certifications and Compliance:

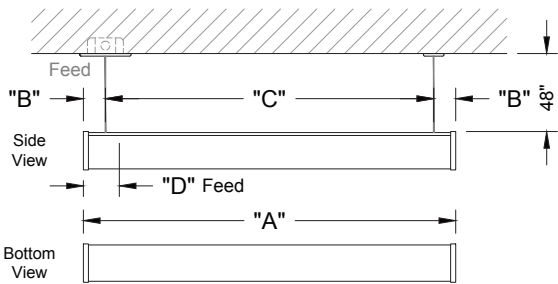
NRTL - For Dry and Damp location
(i.e. cULus)

ARRA Compliant
ADA Compliant
RoHS Compliant

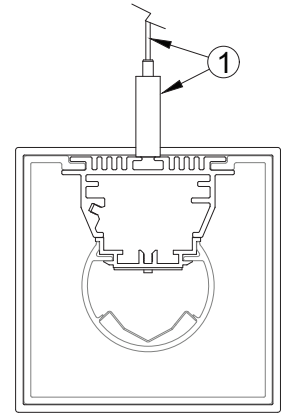
Cable Mounting (C) - 6', 8' & RUNS



Cable Mounting (C) - 2', 3' & 4'



Cable Mounting (C)

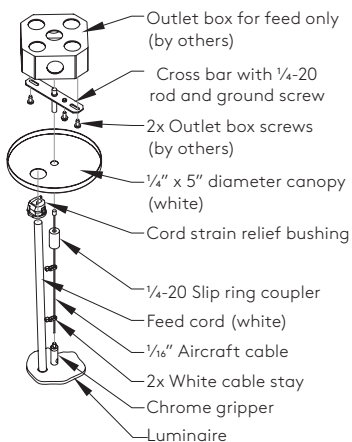


1. Ø1/16" Aircraft Cable w/ chrome gripper for easy adjustment. (48" max. from ceiling to luminaire)

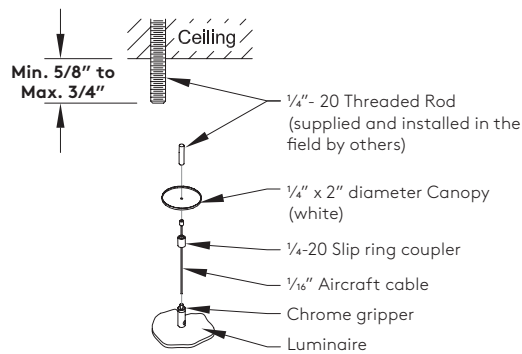
Cable (C) Mounting - Dimensions								
Nominal Length	"A" Housing Length		* "B" (Ref.) End Suspensions		"C" Mid. Suspension		"D" Feed Location	
	Feet/Inch	MM	Feet/Inch	MM	Feet/Inch	MM	Feet/Inch	MM
02 (2 ft.)	2' - 5/16"	618	0'-1 3/16"	34	1'-10"	550	0'-2 1/2"	64
03 (3 ft.)	3' - 5/16"	922	0'-2 1/8"	54	2'-8 1/16"	814	0'-3 5/16"	84
04 (4 ft.)	4' - 5/16"	1227	0'-2 1/8"	54	3'-8 1/16"	1119	0'-3 5/16"	84
06 (6 ft.)	6' - 5/16"	1837	0'-2 1/8"	54	2'-10"	864	0'-3 5/16"	84
08 (8 ft.)	8' - 5/16"	2446	0'-2 1/8"	54	3'-10"	1169	0'-3 5/16"	84

*Dimension(s) rounded to the nearest 1/16" with a ± 1/16 (1mm) tolerance.

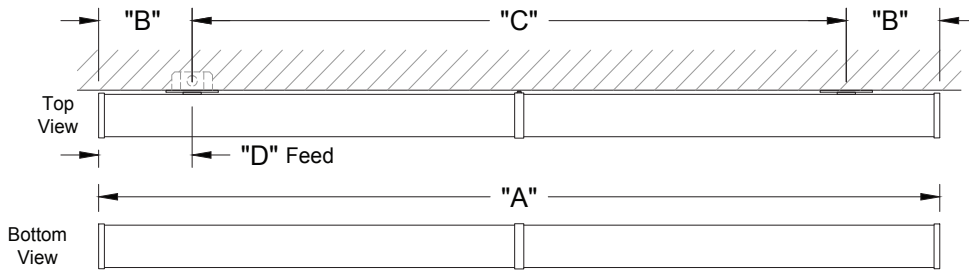
PL9LS Cable (C) Suspension Detail
(Feed location(s) only)



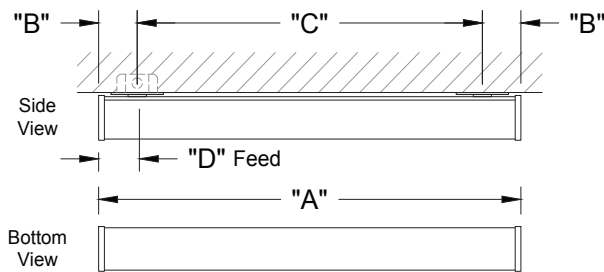
PL9LS Cable (C) Suspension Detail
(Non-Feed location(s) only)



Surface (F) (Wall/Ceiling) - 6', 8' & RUNS



Surface (F) (Wall/Ceiling)- 2', 3' & 4'

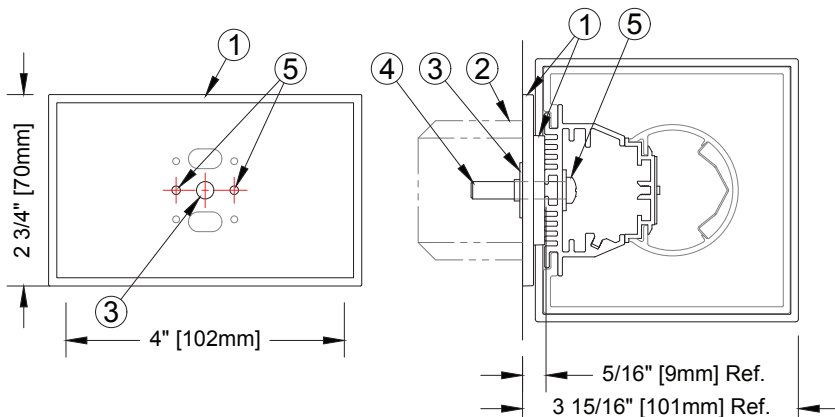


Surface (F) Mount - Dimensions

Nominal Length	"A" Housing Length		* "B" (Ref.) End Suspensions		"C" Mid. Suspension		"D" Feed Location	
	Feet/Inch	MM	Feet/Inch	MM	Feet/Inch	MM	Feet/Inch	MM
02 (2 ft.)	2' - 5/16"	618	0'-2 1/8"	54	1'-8 1/16"	510	0'-2 1/8"	54
03 (3 ft.)	3' - 5/16"	922	0'-3 5/16"	84	2'-5 1/16"	754	0'-3 5/16"	84
04 (4 ft.)	4' - 5/16"	1227	0'-3 5/16"	84	3'-5 1/16"	1059	0'-3 5/16"	84
06 (6 ft.)	6' - 5/16"	1837	0'-8 1/16"	204	4'-8 1/4"	1429	0'-8 1/16"	204
08 (8 ft.)	8' - 5/16"	2446	0'-8 1/16"	204	6'-8 1/4"	2038	0'-8 1/16"	204

*Dimension(s) rounded to the nearest 1/16" with a ± 1/16 (1mm) tolerance.

Surface (F) Mounting (Wall/Ceiling)
(Covers a 2x4 J-Box only)



1. Aluminum wall bracket (by Selux)
2. 2"x4" J-Box at feed location (supplied and installed by others).
3. 1/4-20 Threaded Cross Bar (by Selux)
4. 1/4-20 Phillips screw wall mount (by Selux)
5. M5 x 12 Screw and lock washer (by Selux)

For full details refer to the installation instructions

Drivers:

Static Control

eldoLED SOLOdrive 0-10V linear dimming (DM)

Luminaires supplied with SOLOdrive 0-10V dimming driver for linear dimming curve. Minimum dimming level preset at factory to 1%. For “dim to dark” (down to 0.1%), please consult factory.

eldoLED SOLOdrive 0-10V logarithmic dimming (DML)

Luminaires supplied with SOLOdrive 0-10V dimming driver for logarithmic dimming curve. Minimum dimming level preset at factory to 1%. For “dim to dark” (down to 0.1%), please consult factory.

eldoLED DALI LightShape dimming (DLL)

Luminaires supplied with DUALdrive DALI dimming driver for eldo LightShape tunable white technology. Tunable white allows dim to dark with the addition of adjustable color temperature to reduce nature’s auras.

Dynamic Control

0-10V linear dimming driver paired with Bio-Dimming Module (DYN)

Luminaires supplied with 0-10V dimming driver and 2-channel Bio-Dimming Module for completely customizable and spectrally-modulated light source that reduces melanopic lux while keeping photopic lux at a constant.

0-10V logarithmic dimming driver paired with Bio-Dimming Module (DYL)

Luminaires supplied with 0-10V dimming driver and 2-channel Bio-Dimming Module for completely customizable and spectrally-modulated light source that reduces melanopic lux while keeping photopic lux at a constant.

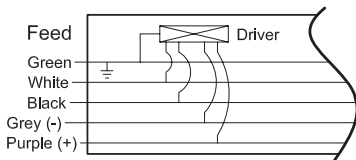
DALI logarithmic dimming driver paired with Bio-Dimming Module (DYD)

Luminaires supplied with DALI dimming driver and 2-channel Bio-Dimming Module for completely customizable and spectrally-modulated light source that reduces melanopic lux while keeping photopic lux at a constant.

* For control recommendations, please contact driver manufacturer.

Wiring Diagrams

- 0-10V linear eldoLED SOLOdrive (DM)
- 0-10V logarithmic eldoLED SOLOdrive (DML)
- DALI logarithmic eldoLED DUALdrive (DLL)
- 0-10V linear driver paired with Bio-Dimming Module (DYN)
- 0-10V logarithmic driver paired with Bio-Dimming Module (DYL)
- DALI logarithmic driver paired with Bio-Dimming Module (DYD)



Standard Wiring supplied for all drivers.	Green = Ground White = Neutral Black = Hot
- The following wire(s) are in addition to the standard above	
DM, DML, DLL, DYN, DYL, and DYD	Gray = (-) DALI or 0-10V Dimming Control Purple = (+) DALI or 0-10V Dimming Control



Fuse (FS) - Fusing, luminaires supplied with a in-line fuse located on the hot wire for each feed. (supplied with an 8A slow burn fuse).

Damp Location (DL) - Luminaires are suitable for use in damp location(s). Examples of such locations include protected areas under canopies, marquees, roofed porches, and similar locations where the fixture(s) are protected from direct contact with rain, snow, or excessive moisture (such as ocean spray). Interior locations include areas subject to moderate degrees of moisture, such as basements and certain barns and cold storage buildings.

Separate Switching (SS) - Luminaires available with separately switched 3' or 4' (nominal) sections starting at 6' and up. Luminaire is intended to be wired to the same panel/breaker (not intended for Emergency use).

- To specify this option, the number of separately switched sections and locations of these sections must be provided at time of order.

*If the project requires different separate switching than outlined above please consult the factory.

Emergency Circuit (EC) - Luminaires with EC option compliant to UL 924 listed emergency luminaire. EC luminaires are intended to be wired to separate panels/breakers for emergency use.

- For 2' to 4' nominal luminaires, the entire fixture is wired for operation on emergency circuit.

- For 6' and up nominal luminaires, the first 3' or 4' nominal length is wired for operation by a separate EM circuit by default to meet the required "Life Safety Code" (NFPA 101).

*If a different configuration is needed please consult the factory.