



## Lukida 4000

### DATA SHEET

An aesthetic solar light column with an award-winning design, ideal for outdoor lighting applications where design matters, such as gardens, parks, and boulevards.

Light source	6 high-efficiency LEDs
Solar Operating Power (SOP)	up to 20W
Maximum luminous flux @ SOP	up to 3050lm
Luminaire efficacy	up to 153lm/W
System Power Ratio (SPR)	up to 10
Autonomy	at least 3 nights (36h)
Overall height	14/16/18/20/22 ft (consult factory for other heights)

### STANDARDS AND COMPLIANCE

Illumination	According to IESNA RP-8-00
IP Rating (Luminaire)	IP66
Power tube impact protection rating	IK06
RoHS	✓

### GLOBAL WARMING MITIGATION – ENERGY AND CO<sup>2</sup> SAVINGS

Electrical energy and CO<sup>2</sup> emission savings of one solar light pole in 30 years compared to:

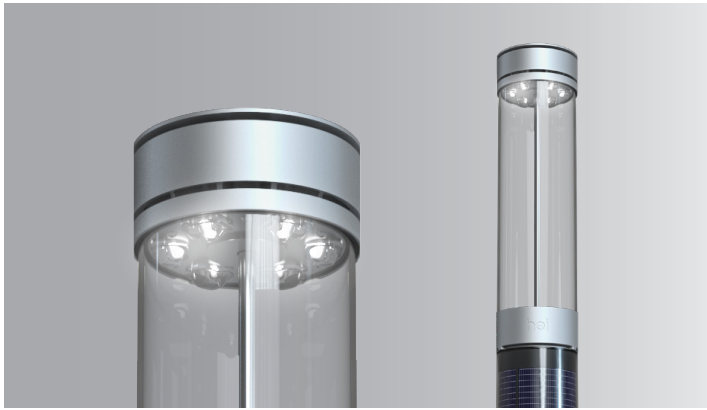
Standard cabled LED	3,700kWh/1.9 tons CO <sup>2</sup>
HPS light (100W)	13,100kWh/6.6 tons CO <sup>2</sup>
Specific CO <sup>2</sup> emissions:	0.5kg CO <sup>2</sup> per kWh

**Product innovation award @**

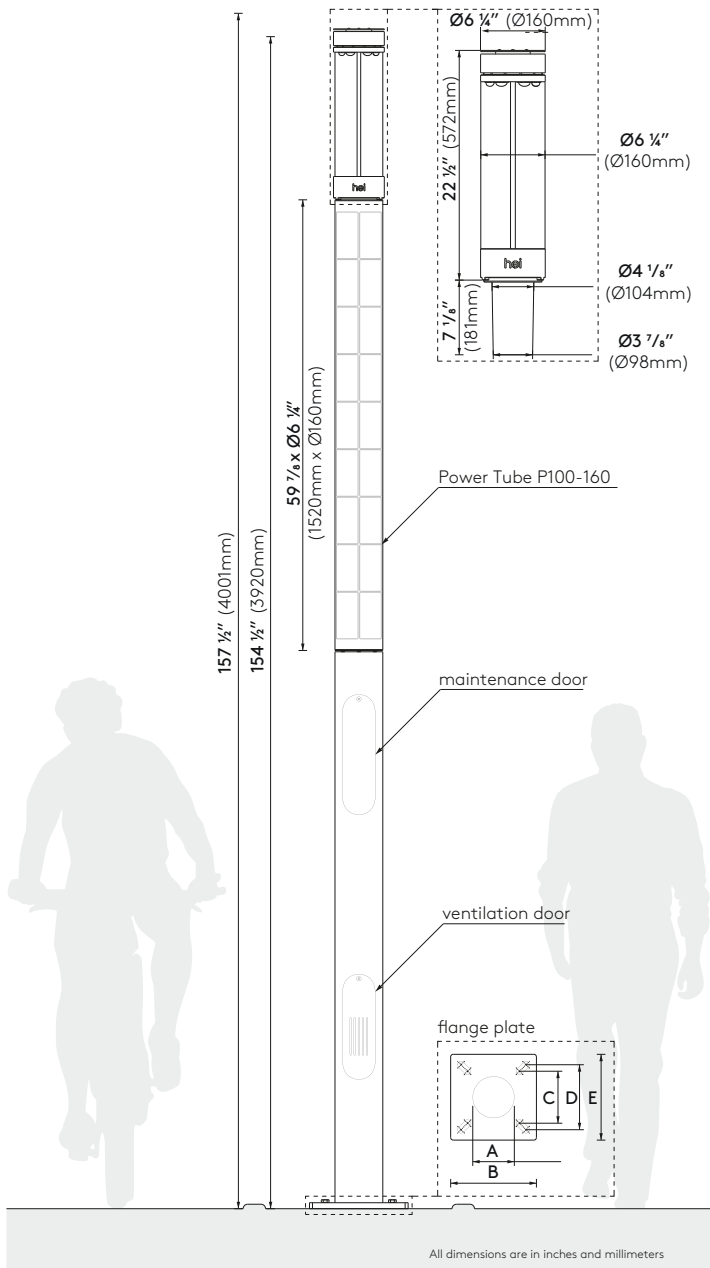


**URBAN DESIGN & LANDSCAPING EXPO**





Lukida 4000



All dimensions are in inches and millimeters

Flange Plate Details		
A	Ø6 ¼"	Ø160mm
B	13"	330mm
C	7 7/8"	200mm
D	9 7/8"	250mm
E	13"	330mm

## LUMINAIRE

Solar Operating Power (SOP)	up to 20W
Maximum luminous flux @ SOP	up to 3050lm
Luminaire efficacy	153lm/W
Correlated Colour Temperature (CCT)	2700K, 3000K, 4000K
Colour rendering index (CRI)	≥80 (4000K/70CRI)
Life time of LEDs (L70/B10)	>90,000 hours
Material (housing)	Aluminum
Finishing (housing)	Powder coated White aluminum (RAL 9006) or Jet Black (RAL 9005). Consult factory for other finishes.
Weight	17 3/8lb

## POLE

Pole height	13 1/8/16 3/8/19 3/8/23 3/4/26 1/4 ft
Light spot height	12 7/8/16 1/8/19 3/8/22 3/4/26 ft
Pole diameter	Ø6 3/8" (Ø160mm)
Foundation	Flange plate
Material	Aluminum
Finishing	Powder coated White aluminum (RAL 9006) or Jet Black (RAL 9005). Consult factory for other finishes.

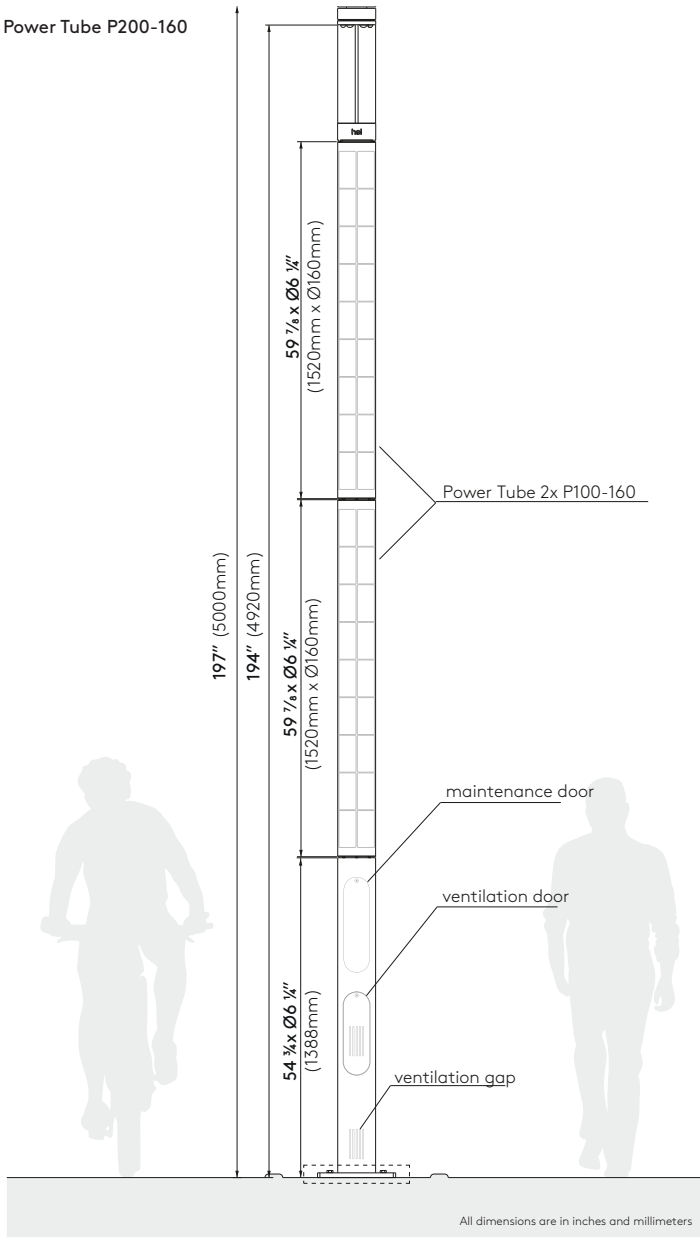
## POWER CONTROL

Programmable microcontroller	✓
Controller location	Pole
Dynamic light profile	Customer-specific
Motion detector	Optional

## BATTERY

Technology	AGM VRLA	Lithium LiFePole4
Location	Inside pole	Inside pole
Capacity	5 x 13Ah/12V	5 x 13Ah/12V
Dimensions	5 x (L) 5 7/8" (151mm) x (W) 3 7/8" (98mm) x (H) 3 3/8" (95mm)	
Temperature range	-4°F to 113°F (-20°C to 45°C)	-4°F to 122°F (-20°C to 50°C)
Weight	46 1/8lb	22lb

Power Tube P200-160



**POWER TUBE P100-160**

Number of Power Tubes	1
Technology	Mono-Crystalline Silicon solar cells
Number of solar cells (arrays)	27 pieces (3 strings x 9 pieces/string)
Nominal power of solar cells	134 W <sub>p</sub>
Dimensions	(L) 60" (1520mm) x Ø6 1/4" (Ø160mm)
Weight	15 1/2lb

**POWER TUBE P200-160**

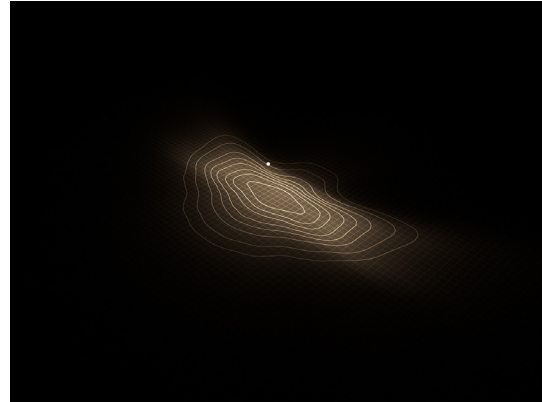
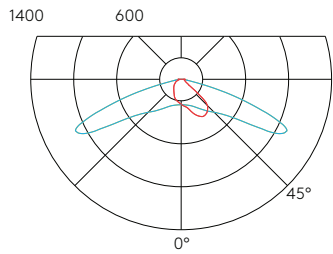
Number of Power Tubes	2
Technology	Mono-Crystalline Silicon solar cells
Number of solar cells (arrays)	54 pieces (6 strings x 9 pieces/string)
Nominal power of solar cells	268W <sub>p</sub>
Dimensions	(L) 120" (3040mm) x Ø6 1/4" (Ø160mm)
Weight	2 x 5 1/2lb

**SYSTEM**

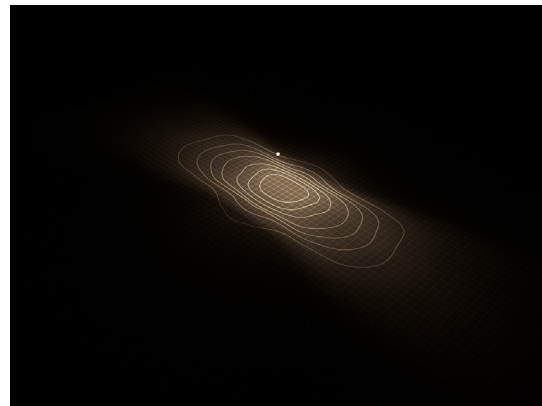
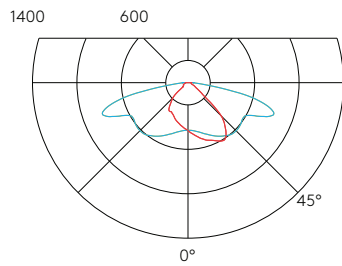
Power Tube	P100-160	P200-160
System Power Ratio (SPR)	5	10
Autonomy	at least 3 nights (36h)	at least 3 nights (36h)

PHOTOMETRIC DATA - (.IES files available online)

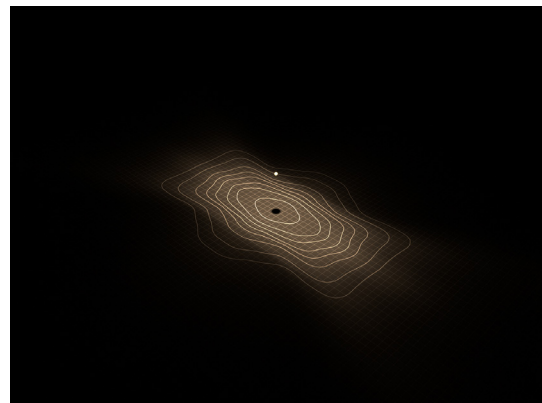
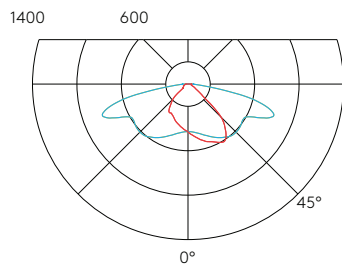
asymm. street



asymm. street with pathway



symm. long



symm.

