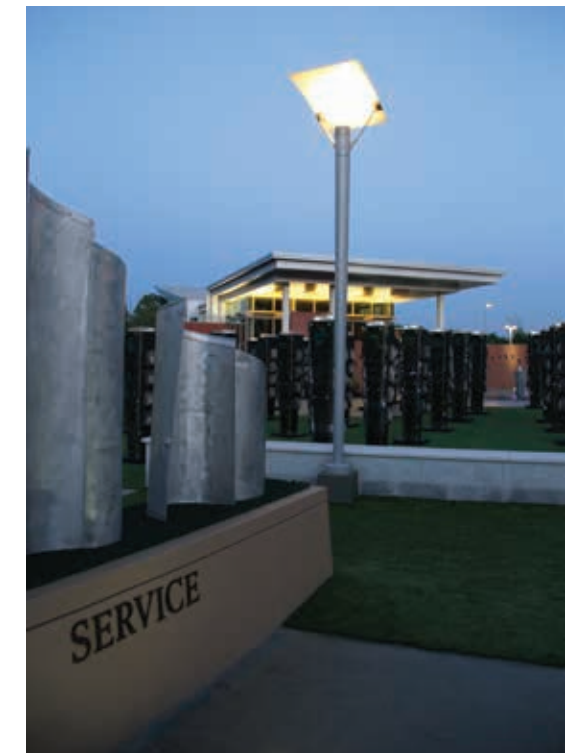


R I T O R N O







Ritorno family

25'

22'

20'

18'

16'

14'

12'

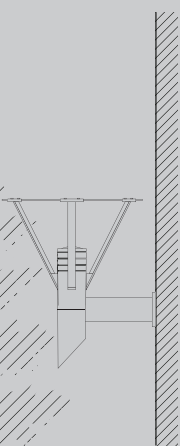
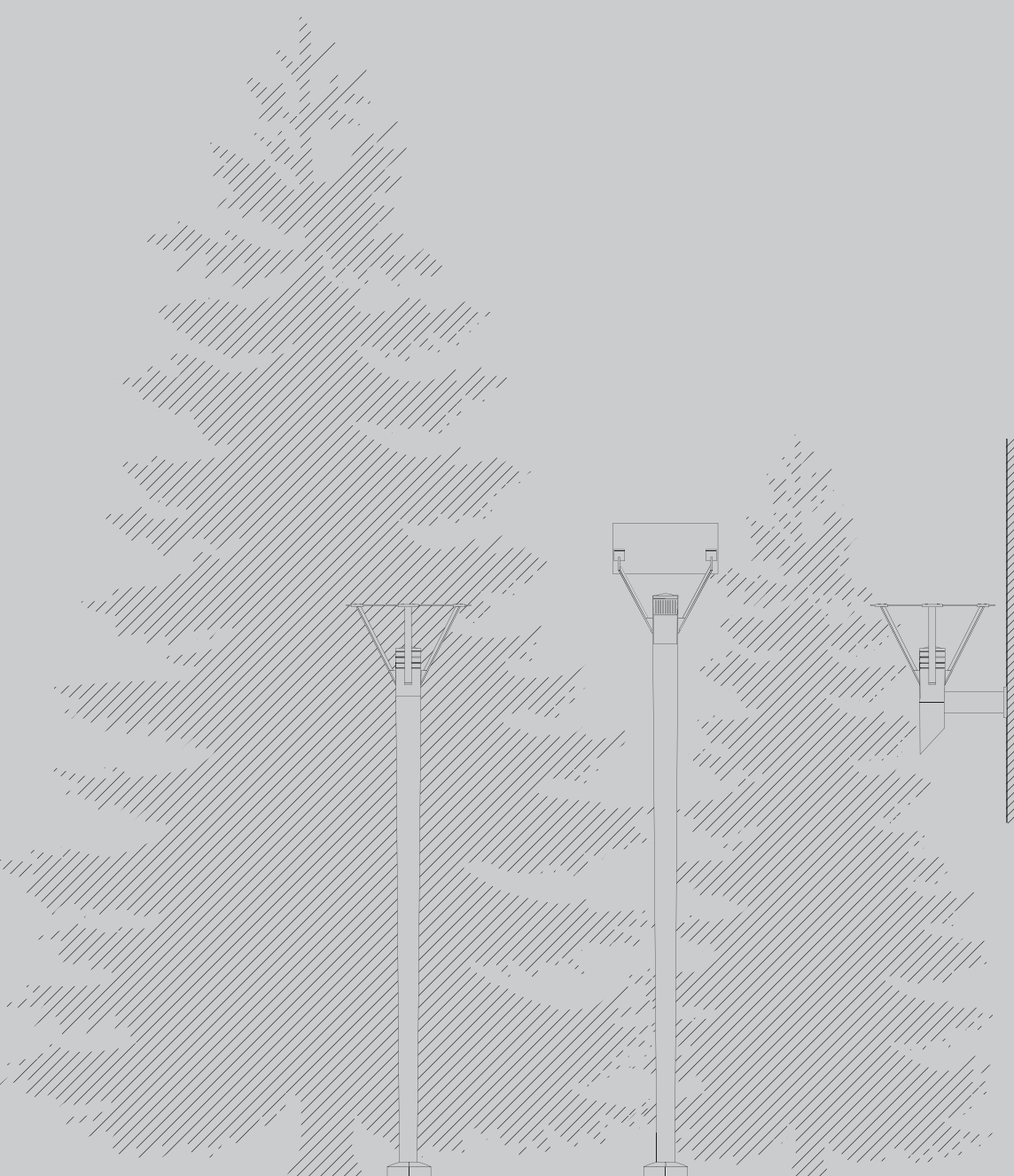
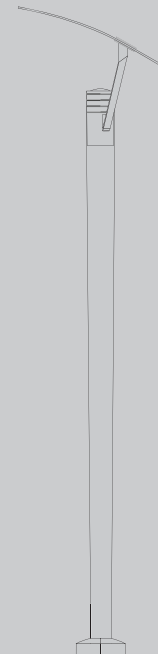
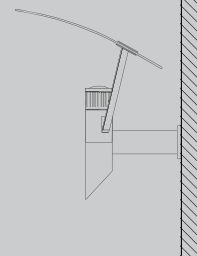
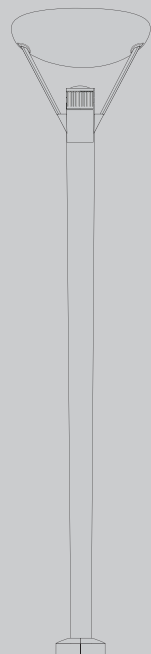
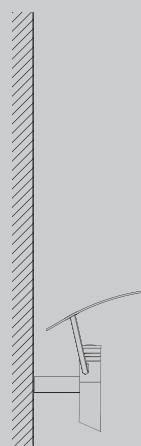
10'

8'

6'

4'

2'



Ritorno Mini Square Asymmetrical

Ritorno Mini Round Asymmetrical

Ritorno Round Asymmetrical LED

Ritorno Round Asymmetrical LED

Ritorno Square Asymmetrical

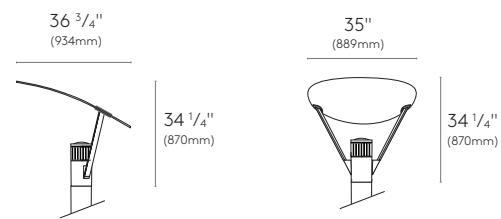
Ritorno Round Symmetrical LED

Ritorno Square Asymmetrical LED

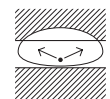
Ritorno Round Symmetrical

Ritorno Round Asymmetrical

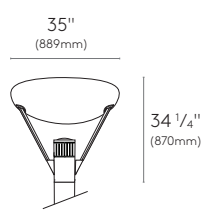
Die cast, low copper aluminum construction with stainless steel fasteners and asymmetrical shade with integrated drip groove · The sealed optical chamber (IP65) and indirect shade provide Uniform, virtually shadow-less illumination with extremely low glare · Asym-metric top shade creates IES distribution type IV · The Ritorno Round Asymmetrical is available as single pole mount or wall mount version and includes Selux standard Tiger Drylac certified polyester powder coat finish and NRTL listing.



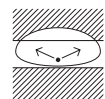
Ritorno Round Asymmetrical



type IV



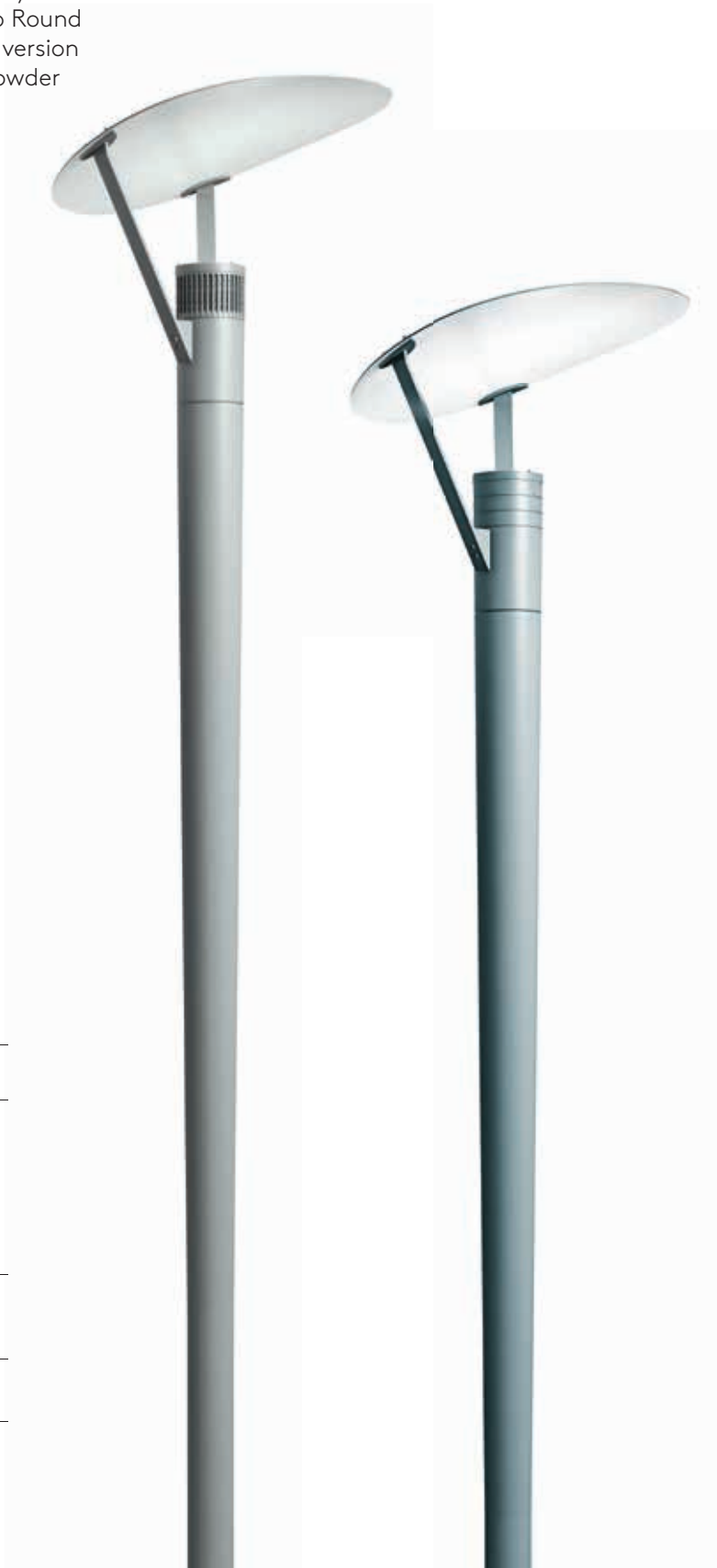
Ritorno Round Asymmetrical LED



type IV

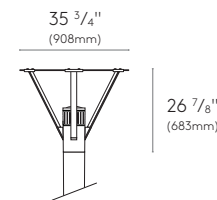
Mounting	pole · wall	pole · wall
Lamping		
MH	50-150W	—
HPS	50-150W	—
QL Induct.	85-165W	—
LED	—	55W
Options	GFCI receptacle, single fusing, hi-lo switching (LED only), dimming (LED only)	

for more detailed drawings, see spec sheet on website

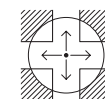


Ritorno Round Symmetrical

Die cast, low copper aluminum construction with stainless steel fasteners and symmetrical shade with integrated drip groove · The sealed optical chamber (IP65) and indirect shade provide Uniform, virtually shadow-less illumination with extremely low glare · The Ritorno Round Symmetrical is available as single pole mount or wall mount version and includes Selux standard Tiger Drylac certified polyester powder coat finish and NRTL listing.

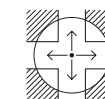


Ritorno Round Symmetrical



type V

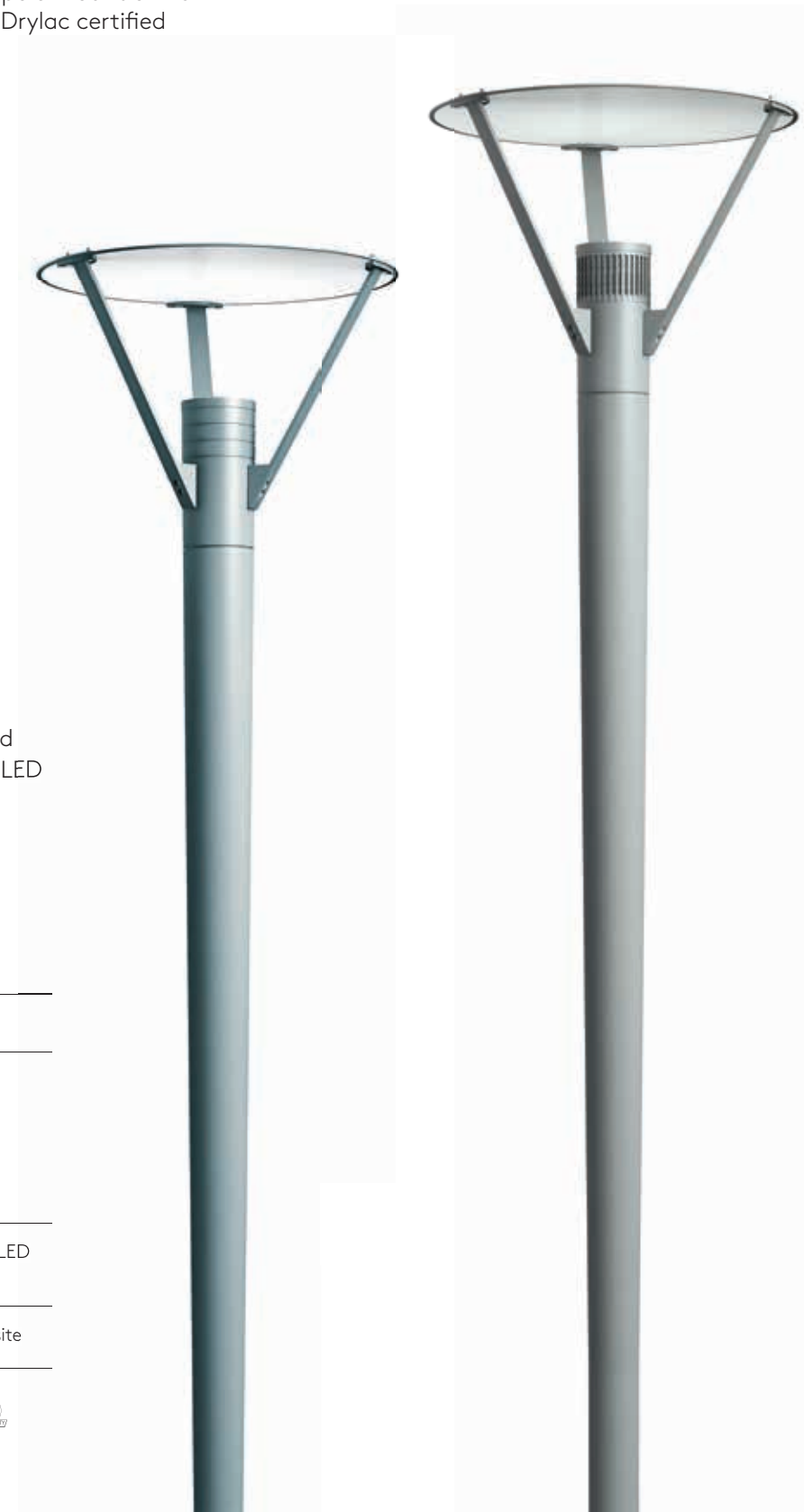
Ritorno Round Symmetrical LED



type V

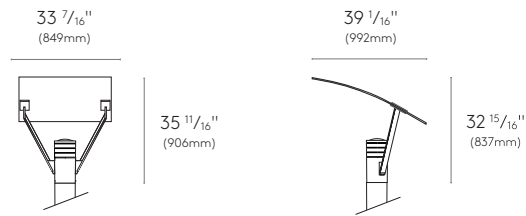
Mounting	pole · wall	pole · wall
Lamping		
MH	50-150W	—
HPS	50-150W	—
QL Induct.	85-165W	—
LED	—	55W
Options	GFCI receptacle, single fusing, hi-lo switching (LED only), dimming (LED only)	

for more detailed drawings, see spec sheet on website

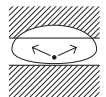


Ritorno Square Asymmetrical

Die cast, low copper aluminum construction with stainless steel fasteners and asymmetrical shade with integrated drip groove · The sealed optical chamber (IP65) and indirect shade provide Uniform, virtually shadow-less illumination with extremely low glare · Asymmetric top shade creates IES distribution type IV. The Ritorno Square Asymmetrical is available as single pole mount or wall mount version and includes Selux standard Tiger Drylac certified polyester powder coat finish and NRTL listing.

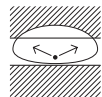


Ritorno Square Asymmetrical



type IV

Ritorno Square Asymmetrical LED



type IV

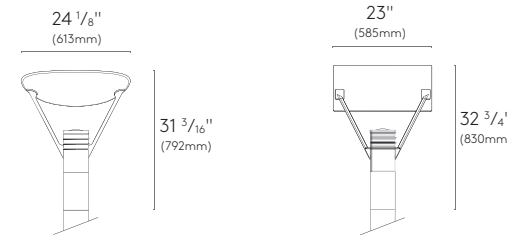
Mounting	pole · wall	pole · wall
Lamping		
MH	50-150 W	—
HPS	50-150 W	—
QL	85-165 W	—
LED	—	55 W
Options	GFCI Receptacle, single fusing, hi-lo switching (LED Only), dimming (LED only)	

for more detailed drawings, see spec sheet on website

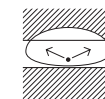


Ritorno Mini

Ritorno Mini constructed from die cast, low copper aluminum with stainless steel fasteners and asymmetrical shade with integrated drip groove · Asymmetric top shade creates IES distribution type IV · The Ritorno Mini Asymmetrical is available as a single pole mount or wall mount version and includes Selux standard Tiger Drylac certified polyester powder coat finish for superior wear resistance.

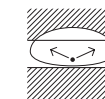


Ritorno Mini Round Asymmetrical



type IV

Ritorno Mini Square Asymmetrical



type IV

Mounting	pole · wall	pole · wall
Lamping		
MH PAR 30	39-70 W	39-70 W
Options	GFCI receptacle, single fusing	

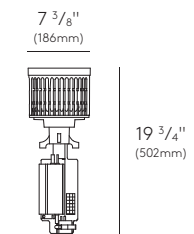
for more detailed drawings, see spec sheet on website





Ritorno LED Retrofit Kit

Ritorno LED Retrofit Kit is a completely sealed (IP65) LED cast housing assembly. The RLRK is designed to update existing pole and wall mounted Ritorno HID luminaires to LED. The RLRK can be used to easily update existing RRA, RRS, and RSA luminaires in the field. Replacement can match existing HID luminaires one for one, up to 100W. LED engine and driver hold a five year limited warranty. Reported L70 >60,000h



Ritorno LED Retrofit Kit

Mounting	retrofit for all existing ritorno luminaires
LED	55W
Options	dimming, hi-lo switching

for more detailed drawings, see spec sheet on website