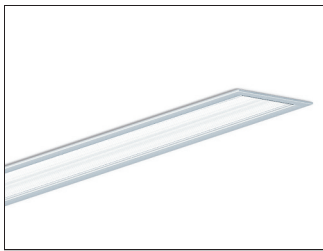


M60 Recessed Linear Fluorescent Flanged Extrusion

selux



Project: _____ **Type:** _____ **Qty:** _____

Series	Lamp Type	Shielding	Mounting	Linear Footage	Finish	Voltage

Options

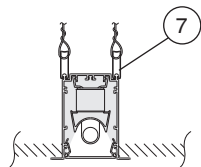
Series	Lamp Type	Shielding	Mounting	Linear Footage	Finish	Voltage	Options
M6R1 M60 Recessed Continuous Flange (Flanged Extrusion/Flanged Endcaps)	1T5 F28T5	SD Satine Lens	SH Suspension Clips	004 4 foot	WH White	120	TB Lengths to Fit 2' Grid T-Bar Ceiling System (M6R1 only) (qty.)EMN¹ Stand-by Battery Pack (prefix quantity, i.e. - 5EMN) FS Single Fusing DM¹ Dimming (specify system) DMA¹ Digital Addressable Dimming FW Flex Whip (standard) FW1 Flex Whip (dimming) Track² Eutrac Standard DL Suitable for Damp Locations CCEA Chicago Plenum Downlights
	1T5HO F54T5HO	OD Extra Diffuse Lens	RC Rotating Crossbars PM Perimeter Mount TS 1" Studs (factory installed)	008 8 foot 012 12 foot	BK Black SV Silver SP Specify Premium Color	277 347	
M6R2 M60 Recessed Flush End (Flanged Extrusion/Flangeless Endcaps)				For actual lengths see layout dimensions. For other lengths, configurations indicate nominal length rounded to the next highest foot. Factory will supply layout drawings. Individual fixtures cannot be field joined.			

¹Must be low profile ballasts (1³/₈" wide x 1³/₁₆" high); consult factory for details.

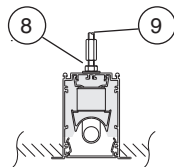
²Consult factory for details.

Mounting Diagrams

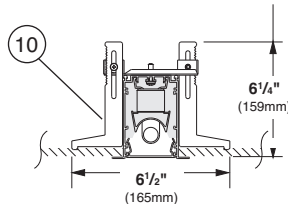
Suspension Clips (SH)



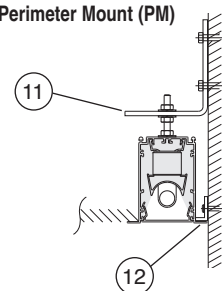
Pre-installed Rod (TS)



Rotating Crossbars (RC)

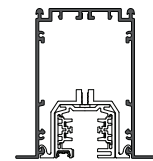


Perimeter Mount (PM)

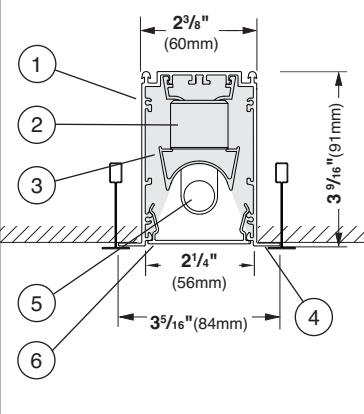


Track

Track insert including track available for all configurations, consult factory for details.



M6R1 M6R2



1. Housing - Continuous, 6063-T5 extruded aluminum profile up to 16 feet long.

2. Ballast - Electronic, high power factor, class "P," type "A" sound rating. Specify 120V, 277V, or 347V. Ballast is factory pre-wired with leads to one end of fixture. Consult factory for ballast options.

3. Gear Tray - Die formed tray with specular aluminum reflector. Gear tray installs as complete electrical unit and is held in place with 1/4 turn latches. It is fully accessible from below ceiling.

4. Flange - 9/16" (14mm) wide flange is part of the main extruded body. Specify continuous flange (M6R1) or flush end (M6R2).

5. Lamps - As noted (by others). Other lamp lengths or wattages available, consult factory.

6. Shielding - Extruded, impact resistant acrylic snap in lens: Extra diffuse (OD) or satine (SD).

7. Spring steel suspension clips - Supplied two places, located nominally every 4 ft. Support wires Supplied and installed by others.

8. Pre-installed 1" 1/4-20 Stud - Attached to fixture every nominal 4 feet.

9. Coupling and Threaded Rod to Structure - Supplied and installed by others.

10 Rotating Crossbar - For inaccessible ceilings, adjustable for ceiling thicknesses from 1/4" to 2". Support required nominally every 4'.

11. Steel Wall Bracket and 1/4-20 Rod - Supplied nominally every 4 ft. (Fasteners to wall and wall anchors by others.)

12. Aluminum Wall Bracket - Secured to wall (fasteners and wall

anchors by others) and runs entire length of fixture. Also supplied for width of M6R1 continuous flange fixtures. Allows for 1/8" gap between flange and wall to create shadow line.

Interior Luminaire Finish - Selux utilizes a high quality Polyester Powder Coating. All Selux luminaires are finished in our Tiger Drylac certified facility and undergo a five stage intensive pretreatment process where product is thoroughly cleaned, phosphated, and sealed. Selux powder coated products provide excellent salt and humidity resistance as well as ultra violet resistance for color retention. All products are tested in accordance with test specifications for coatings from ASTM and PCI.

Standard interior colors are White (WH), Black (BK), and Silver (SV). Selux premium colors (SP) are available, please specify from your Selux color selection guide.

Selux Corp. © 2018
TEL: (845) 834-1400
FAX: (845) 834-1401
www.selux.us
M6R-0118-01 (v7.5)

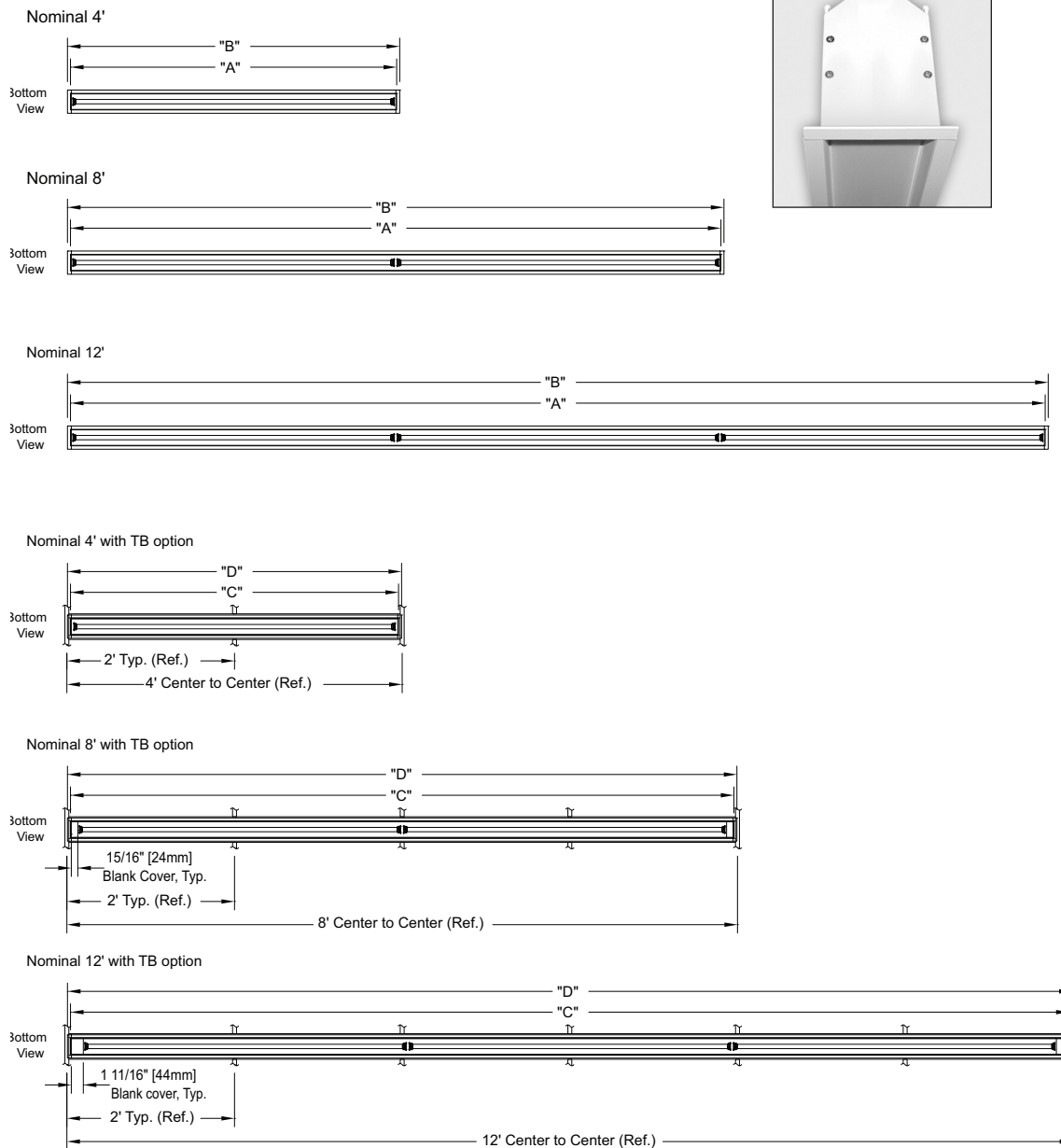
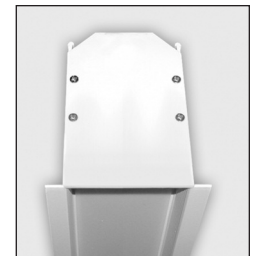


In a continuing effort to offer the best product possible, we reserve the right to change, without notice, specifications or materials that in our opinion will not alter the function of the product. Specification sheets found at www.selux.us are the most recent versions and supercede all other printed or electronic versions.

Standard Layout Dimensions (M6R1 Shown)

Continuous Flange (M6R1)

Flush End (M6R2)



Fixture supplied with 7/8 Feed Hole located 2 1/8" from end in top of fixture.

	1T5 / 1T5HO			
	"A" - M6R1/M6R2 Including Endplates	"B" - M6R1 Outside Flange	"C" - M6R1 w/TB Including Endplates	"D" - M6R1 w/TB Outside Flange
4 foot individual	3'-10 11/16" (1186mm)	3'-11 9/16" (1208mm)	3'-10 15/16" (1193mm)	3'-11 13/16" (1215mm)
8 foot individual	7'-9 1/8" (2365mm)	7'-10" (2387mm)	7'-10 15/16" (2412mm)	7'-11 13/16" (2434mm)
12 foot individual	11'-7 1/2" (3544mm)	11'-8 3/8" (3566mm)	11'-10 15/16" (3631mm)	11'-11 13/16" (3653mm)

For other lengths, lamping, continuous runs or configurations please specify overall length (in feet), accessories desired and sketch/drawing of configuration. Selux will detail project drawings upon order and supply submittal drawings for approval. Individual fixtures cannot be field joined. If you have any questions please contact Selux customer service or applications engineering for assistance (1-800-SELUX-CS).