

M60 Recessed Linear Fluorescent Flanged Extrusion - STAGGERED LAMPS


selux



Project: _____ **Type:** _____ **Qty:** _____

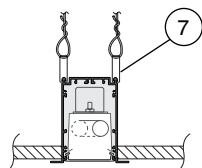
Fixture Series	Lamp Type	Shielding	Mounting	Nominal Length	Finish	Voltage

Options

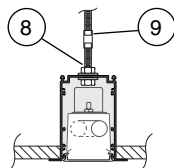
Fixture Series	Lamp Type	Shielding	Mounting	Nominal Length	Finish	Voltage	Options
M6R1S M60 Recessed Continuous Flange (Flanged Extrusion/Flanged Endcaps) Staggered Lamps M6R2S M60 Recessed Flush End (Flanged Extrusion/Flangeless Endcaps) Staggered Lamps	1T5 F28T5 1T5HO F54T5HO 	OD Extra Diffuse Lens SD Satine Lens	SH Suspension Clips TS 1" Studs (factory installed) RC Rotating Crossbars PM Perimeter Mount	008 8 foot 012 12 foot For actual lengths see following page. For other lengths, configurations indicate nominal length rounded to the next highest foot. Factory will supply layout drawings. Individual fixtures cannot be field joined.	WH White BK Black SV Silver SP Specify Premium Color	120 277 347	TB Lengths to Fit 2' Grid T-Bar Ceiling System (M6R1S only) (qty.)EM Stand-by Battery Pack ¹ (prefix quantity, i.e. -5EM) FS Single Fusing DM Dimming ¹ (specify system) DMA Digital Addressable Dimming ¹ FW Flex Whip (standard) FW1 Flex Whip (dimming) Track Eutrac Standard ² DL Suitable for Damp Locations Downlights
	¹ Must be low profile ballasts (1 ³ / ₈ " W x 1 ³ / ₁₆ " H); consult factory for details. ² Consult factory for details.						

Mounting Diagrams

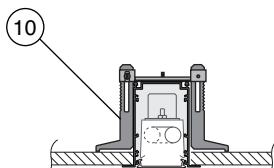
Suspension Clips (SH)



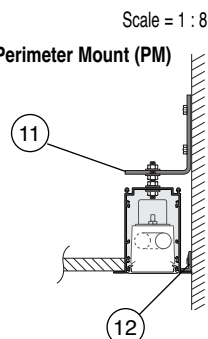
Pre-installed Rod (TS)



Rotating Crossbars (RC)

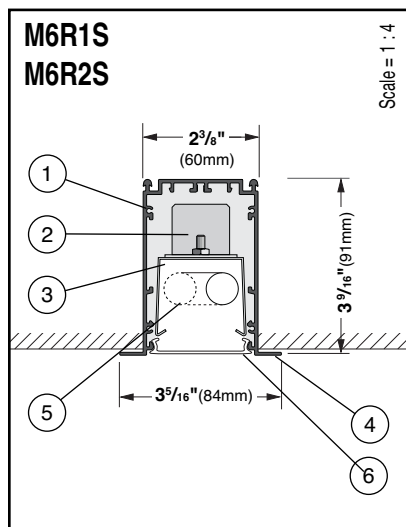
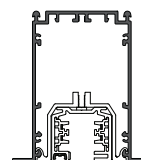


Perimeter Mount (PM)



Track

Track insert including track available for all configurations, consult factory for details.



1. Housing - Continuous, 6063-T5 extruded aluminum profile up to 16 feet long.

2. Ballast - Electronic, high power factor, class "P," type "A" sound rating. Specify 120v, 277v, or 347v. Ballast is factory pre-wired with leads to one end of fixture. Consult factory for ballast options.

3. Gear Tray - Die formed gear tray with integral factory preset sliding covers to fill extrusion with light, with a matt white finish for even illumination. Geartray installs as complete electrical unit and is held in place with knurled dress nuts. It is fully accessible from below ceiling.

4. Flange - 9/16" (14mm) wide flange is part of the main extruded body. Specify flush (M6R2) or flanged end plates (M6R1).

5. Lamps - As noted (by others). Other lamp lengths or wattages available, consult factory.

6. Shielding - Choose between Extra Diffuse Lens and Satine Lens.

7. Spring steel suspension clips - Supplied two places, located nominally every 4 feet. Support wires supplied and installed by others.

8. Pre-installed 1" 1/4-20 Stud - Attached to fixture every nominal 4 feet.

9. Coupling and Threaded Rod to Structure - Supplied and installed by others.

10 Rotating Crossbar - For inaccessible ceilings, adjustable for ceiling thicknesses from 1/4" to 2". Support required nominally every 4'.

11. Steel Wall Bracket and 1/4-20 Rod - Supplied nominally every 4 ft. (Fasteners to wall and wall anchors by others.)

12. Aluminum Wall Bracket - Secured to wall (fasteners and wall anchors by others) and runs entire length of fixture. Also supplied for width of M6R1 continuous flange fixtures. Allows for 1/8" gap between flange and wall to create shadow line.

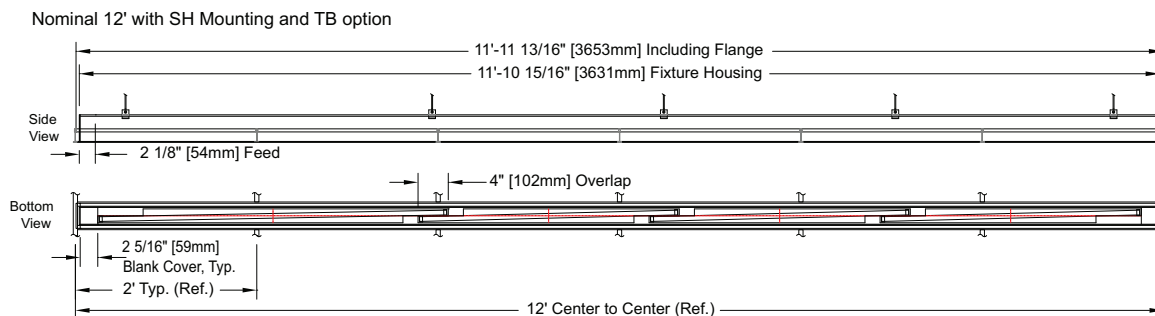
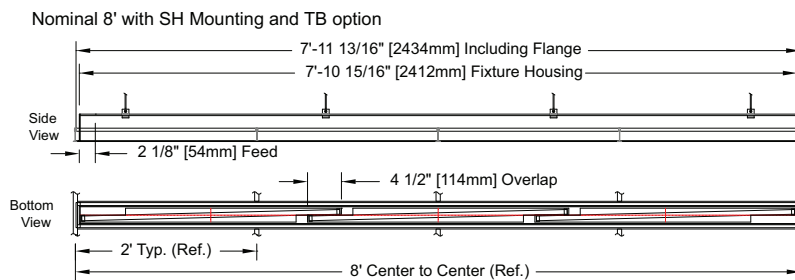
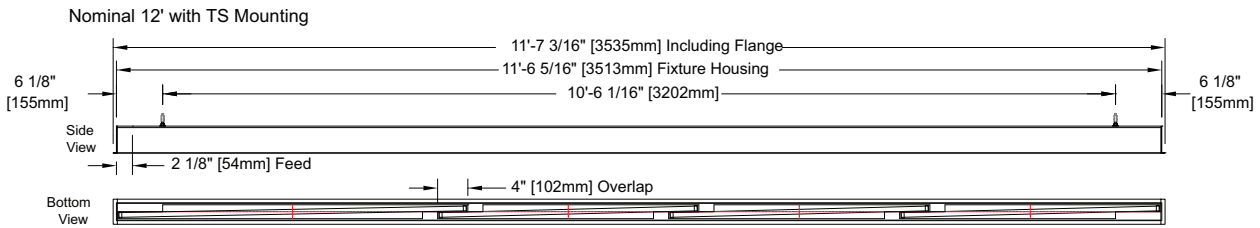
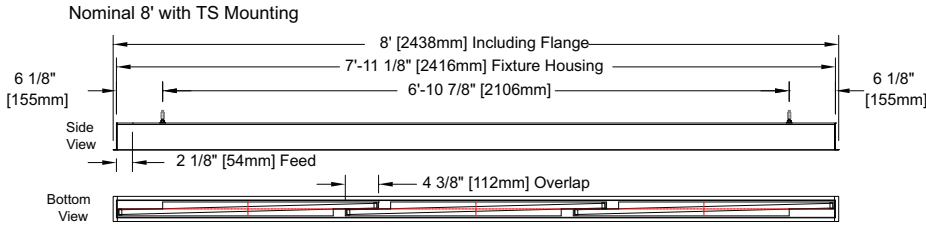
Interior Luminaire Finish - Standard interior colors are White (WH), Black (BK) and Silver (SV). Selux premium colors (SP) are available, please specify from your Selux color selection guide.

Selux Corp. © 2014
 TEL (845) 834-1400
 FAX (845) 834-1401
 www.selux.us
 M6R1S-0614-01 (v6.1)



In a continuing effort to offer the best product possible, we reserve the right to change, without notice, specifications or materials that in our opinion will not alter the function of the product. Specification sheets found at www.selux.us are the most recent versions and supercede all other printed or electronic versions.

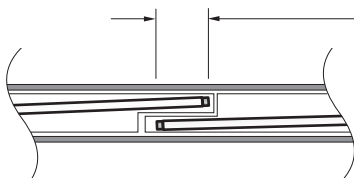
M60 Recessed Linear Fluorescent Flanged Extrusion - STAGGERED LAMPS



Fixture supplied with 7/8 Feed Hole located 2 1/8" from end in top of fixture.

For other lengths, lamings, continuous runs or configurations please specify overall length (in feet), accessories desired and sketch/drawing of configuration. Selux will detail project drawings upon order and supply submittal drawings for approval. Individual fixtures cannot be field joined. If you have any questions please contact Selux customer service or applications engineering for assistance (1-800-SELUX-CS).

Staggered Lamps Principle



Lamps are spaced with 4" to 6" overlap to completely illuminate luminaire and eliminate socket shadows. Factory will supply approval drawings for other lengths using combinations of 21W & 28W T5 lamps or 39W & 54W T5HO lamps.

Minimal socket shadows may be visible at certain angles. Refer to pages 6 and 8 for more information.