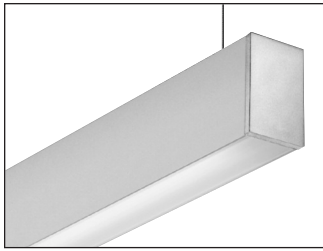


# M60 Linear Fluorescent Direct Surface, Pendant & Wall



**Project:** \_\_\_\_\_ **Type:** \_\_\_\_\_ **Qty:** \_\_\_\_\_

<b>M60</b>	_____	_____	_____	_____	_____	_____
<b>Fixture Series</b>	<b>Lamp Type</b>	<b>Shielding</b>	<b>Mounting</b>	<b>Linear Footage</b>	<b>Finish</b>	<b>Voltage</b>
_____	_____	_____	_____	_____	_____	_____

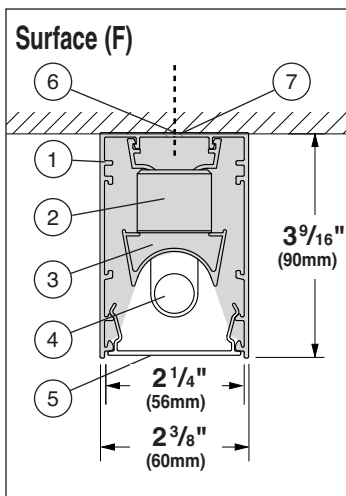
**Options**

Fixture Series	Lamp Type	Shielding	Mounting	Linear Footage	Finish	Voltage	Options
<b>M60</b> M60 Direct Multi-Mount Form	1T5 F28T5	SD Satine Lens	F Surface Mount	004 4 foot	WH White	120	(qty)EMN Stand-by Battery Pack <sup>1</sup> (prefix quantity, i.e. - 5EMN)
	1T5HO F54T5HO	OD Extra Diffuse Lens	C Cable	008 8 foot	BK Black	277	DM Dimming <sup>1</sup> (specify system)
			S Swivel Stem	012 12 foot	SV Silver	347	DMA Digital Addressable Dimming <sup>1</sup>
			RS Rigid Stem	For actual lengths see following page. For other lengths, configurations indicate nominal length rounded to the next highest foot. Factory will supply layout drawings. Individual fixtures cannot be field joined.	SP Specify Premium Color		FS Single Fusing
			W Wall				Track Eutrac Standard <sup>2</sup>
			TE Telescoping Endcaps				DL Suitable for Damp Locations
							Downlights

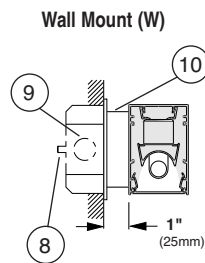
<sup>1</sup>Must be low profile ballasts (1 3/16" wide x 1 3/16" high); consult factory for details. <sup>2</sup>Consult factory for details.

**M60 Mounting Diagrams**

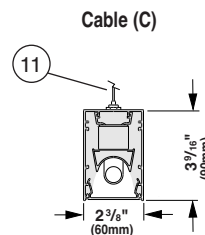
Scale = 1 : 8



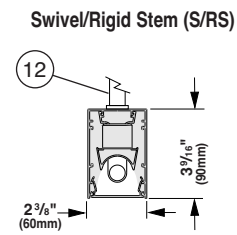
- Housing** - Continuous, 6063-T5 extruded aluminum profile up to 16 feet long.
- Ballast** - Electronic, high power factor, class "P," type "A" sound rating. Specify 120V, 277V, or 347V. Ballast is factory pre-wired with leads to one end of fixture. Consult factory for ballast options.
- Gear Tray** - Die formed tray with specular aluminum reflector. Gear tray installs as complete electrical unit and is held in place with 1/4 turn latches. It is fully accessible from below ceiling.



- Lamps** - As noted (by others). Other lamp lengths or wattages available; consult factory.
- Shielding** - Extruded, impact resistant acrylic snap in lens: Extra diffuse (OD) or satine (SD).
- Ø 9/32" Mounting Hole** - Drilled at factory 6 1/4" from end of fixture and nominally every 24". Mounting hardware supplied and installed by others
- Ø 7/8" Feed Hole** - Drilled at factory 2 1/4" from end of fixture.
- Ø 1/4" Threaded Rod** - To anchor Wall Bracket, supplied and installed by others.
- Outlet Box** - Supplied and installed by others. Use 2" x 4" outlet box.
- Wall Bracket** - 4" square aluminum wall bracket provided. See layout pages for details.



- 1/16" Aircraft Cable Suspension** - Supplied with chrome gripper for easy adjustment. 48" max suspension from ceiling to top of luminaire.
- 5/8" Steel Swivel Stem or Rigid Stem Suspension** - Swivel Stem provides 30° swivel rotation and can be cut in field; Rigid Stem can not be cut in field. 48" max suspension from ceiling to top of luminaire.
- End Cap Support Brackets** - Welded flush to end of fixture. Supplied with extruded aluminum cover profile. Two lock-down screws on bottom of fixture.
- Feed Hole** - Centered in wall plate.
- Ø 3/16" Mounting Holes (2)** - Horizontally centered in wall plate.



- ished in our Tiger Drylac certified facility and undergo a five stage intensive pre-treatment process where product is thoroughly cleaned, phosphated, and sealed. Selux powder coated products provide excellent salt and humidity resistance as well as ultraviolet resistance for color retention. All products are tested in accordance with test specifications for coatings from ASTM and PCI.
- Standard interior colors are White (WH), Black (BK), and Silver (SV). Selux premium colors (SP) are available, please specify from your Selux color selection guide.

**Interior Luminaire Finish** - Selux utilizes a high quality Polyester Powder Coating. All Selux luminaires are fin-

Selux Corp. © 2018  
 TEL: (845) 834-1400  
 FAX: (845) 834-1401  
 www.selux.us  
 M60-0118-01(ss-v6.42)

Union Made Affiliated  
 with IBEW Local 363 NRTL Listed (i.e. UL, CSA)

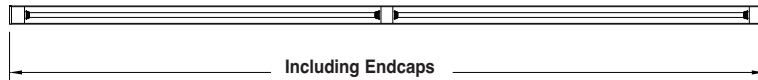
In a continuing effort to offer the best product possible, we reserve the right to change, without notice, specifications or materials that in our opinion will not alter the function of the product. Specification sheets found at www.selux.us are the most recent versions and supercede all other printed or electronic versions.

**M60 Surface / Pendant / Wall Layout Dimensions**

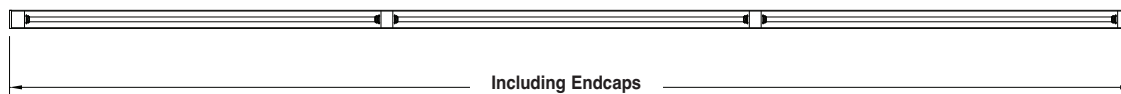
Nominal 4 foot individual - Bottom view



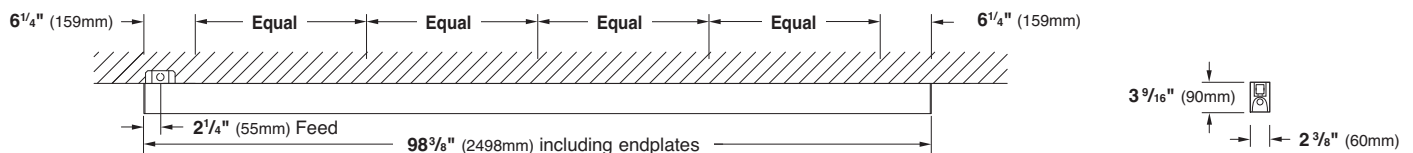
Nominal 8 foot individual - Bottom view



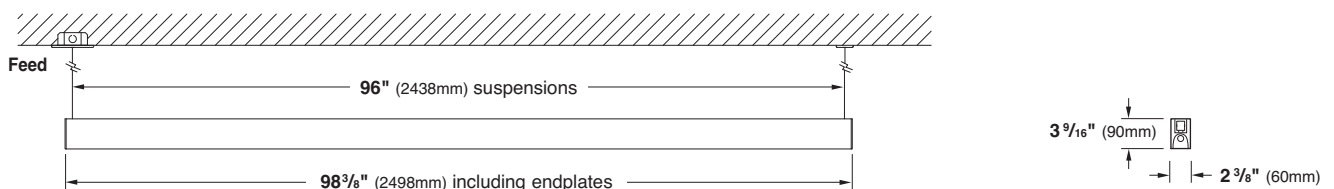
Nominal 12 foot individual - Bottom view



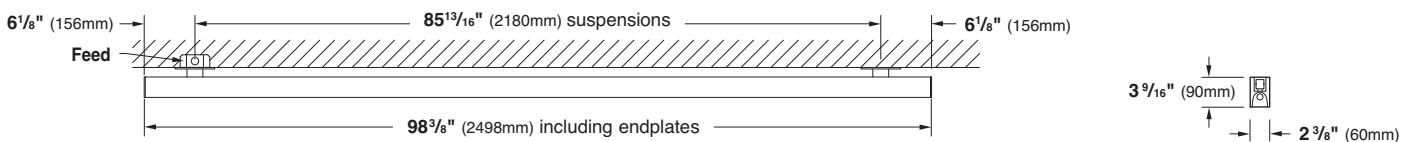
Typical Surface Mount - Side View (Supplied with 7/8 knockout located 2 1/4" from end in top of fixture.)



Typical Pendant Mount - Side View (8' Nominal individual shown)



Typical Wall Mount - Top View (8' Nominal individual shown)



	1T5 / 1T5HO			
	Pendant Mount Including Endplates	Surface Mount Including Endplates	Pendant Suspensions	Wall Suspensions
<b>4 foot individual</b>	50.34" (1279mm)	46.97" (1193mm)	48.00" (1219mm)	37.84" (961mm)
<b>8 foot individual</b>	98.34" (2498mm)	93.38" (2372mm)	96.00" (2438mm)	85.81" (2180mm)
<b>12 foot individual</b>	146.34" (3717mm)	139.81" (3551mm)	144.00" (3658mm)	133.71" (3396mm)

For other lengths, lamping, continuous runs or configurations please specify overall length (in feet), accessories desired and sketch/drawing of configuration. Selux will detail project drawings upon order and supply submittal drawings for approval. Individual fixtures cannot be field joined. If you have any questions please contact Selux customer service or applications engineering for assistance (1-800-SELUX-CS).