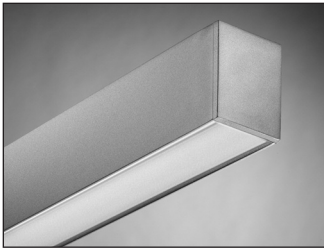


M100 Linear Fluorescent Direct Asymmetrical Surface, Pendant & Wall

selux



Project: _____ **Type:** _____ **Qty:** _____

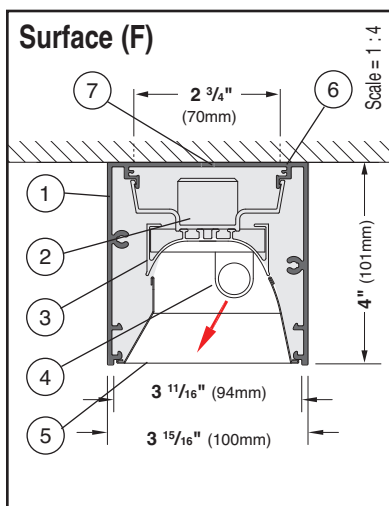
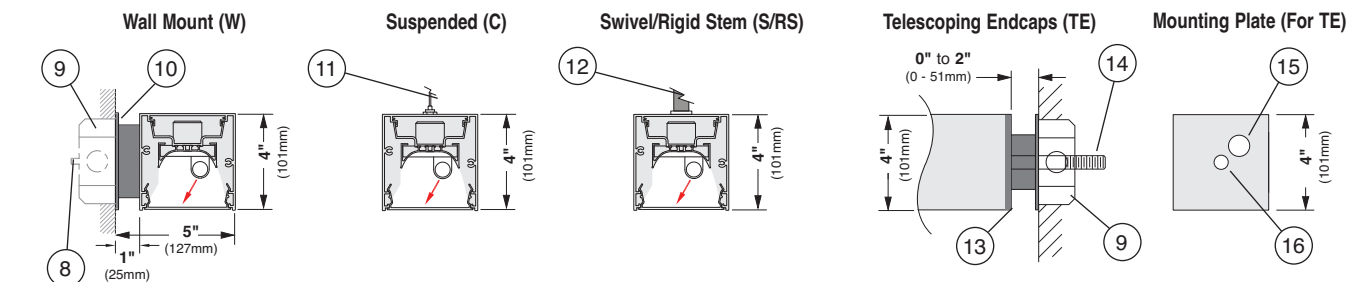
M1A _____
Series **Lamping** **Shielding** **Mounting** **Linear Footage** **Finish** **Voltage**

Options

Series	Lamping	Shielding	Mounting	Nominal Length	Finish	Voltage	Options
M1A M100 Direct Asymmetrical	1T5 F28T5	AMP Asymmetric Silky Specular Louver SD Satine Lens	F Surface C Suspended S Swivel Stem RS Rigid Stem W Wall Mount TE Telescoping Endcaps	004 4 foot	WH White BK Black SV Silver SP Specify Premium Color	120 277 347	(qty)EM Stand-by Battery Pack ¹ (prefix quantity, i.e. - 5EM) DMA Digital Addressable Dimming ¹ DM Dimming ¹ (specify system) FS Single Fusing DL Suitable for Damp Locations SI Satine Acrylic Inlay (for AMP only) Downlights
	1T5HO F54T5HO			008 8 foot			
	1T8 F32T8			012 12 foot			
				For actual lengths see following page. For other lengths, configurations indicate nominal length rounded to the next highest foot. Factory will supply layout drawings. Individual fixtures cannot be field joined.			
¹ Must be low profile ballasts (1 ¹ / ₂ " W x 1 ³ / ₁₆ " H); consult factory for details. ² Consult factory for details.							

M1A Mounting Diagrams

Scale = 1 : 8



1. Housing - Continuous, 6063-T5 extruded aluminum profile up to 16 feet long. Joined with Connector Plus Joining System for ease of installation and to assure a uniform appearance.

2. Ballast - Electronic, high power factor, class "P," type "A" sound rating. Specify 120v, 277v, or 347v. Ballast is factory pre-wired with leads to one end of fixture. Consult factory for ballast options.

3. Gear Tray - Extruded aluminum, with white painted finish. Gear tray installed as a complete electrical unit and is held in place with knurled dress nuts. It is fully accessible from below ceiling.

4. Lamps - As noted (by others). Other lamp lengths or wattages available, consult factory.

5. Shielding - Extruded, impact resistant acrylic snap in satine Louver.

6. Ø 9/32" Mounting Holes (2) - Drilled at factory 6¹/₄" from end of fixture and nominally every 24". Mounting hardware supplied and installed by others.

7. Ø 7/8" Feed Hole - drilled at factory 2¹/₄" from end of fixture. Outlet box (not shown) supplied and installed by others.

8. Ø 1/4" Threaded Rod and Mounting Hardware - To anchor End Cap Support Bracket/Wall Bracket, supplied and installed by others.

9. Outlet Box - Supplied and installed by others.

10. Wall Bracket - 4" square aluminum wall bracket provided. See layout pages for details.

11. 1/16" Aircraft Cable Suspension - Supplied with chrome gripper for easy adjustment. 48" max suspension from ceiling to top of luminaire.

12. 5/8" Steel Swivel Stem or Rigid Stem Suspension - Swivel Stem provides 30° swivel rotation and can be cut in field; Rigid Stem can not be cut in field. 48" max suspension from ceiling to top of luminaire.

13. End Cap Support Brackets - Welded flush to end of fixture. Supplied with extruded aluminum cover profile. Two lock-down screws on bottom of fixture.

14. Ø 1/2" Threaded Rod - supplied and installed by others.

15. Ø 7/8" Feed Hole - In wall plate offset from center.

16. Ø 9/16" Mounting Hole - Centered in wall plate.

Interior Luminaire Finish - Standard interior colors are White (WH), Black (BK) and Silver (SV). Selux premium colors (SP) are available, please specify from your Selux color selection guide.



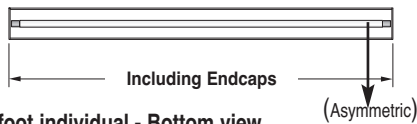
Union Made Affiliated
with IBEW Local 363

Selux Corp. © 2018
 TEL (845) 834-1400
 FAX (845) 834-1401
 www.selux.us
 M1A-0118-01 (ss-v7.1)

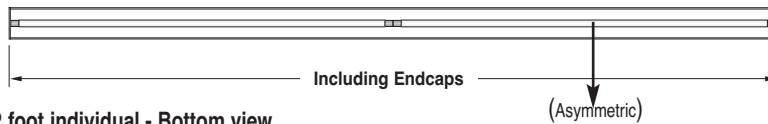
In a continuing effort to offer the best product possible, we reserve the right to change, without notice, specifications or materials that in our opinion will not alter the function of the product. Specification sheets found at www.selux.us are the most recent versions and supercede all other printed or electronic versions.

M1A Surface / Pendant / Wall Layout Dimensions

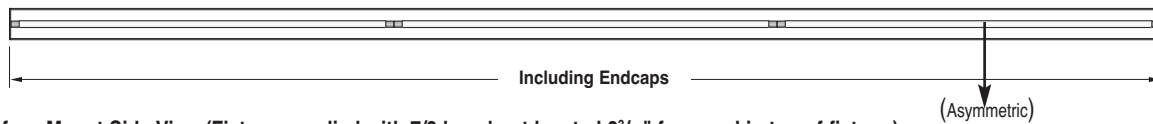
Nominal 4 foot individual - Bottom view



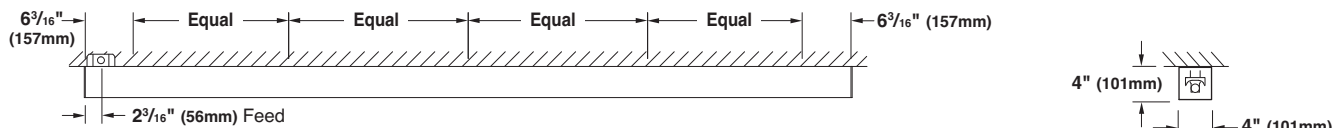
Nominal 8 foot individual - Bottom view



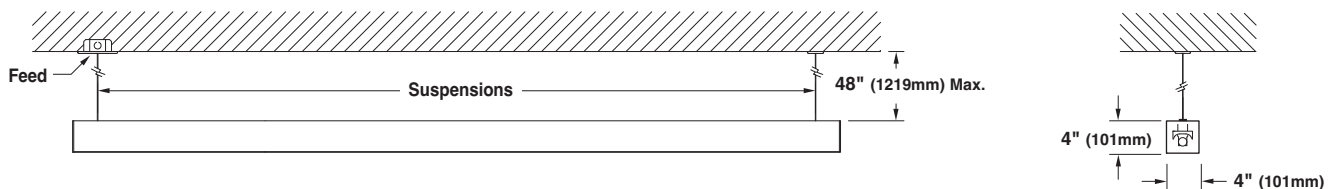
Nominal 12 foot individual - Bottom view



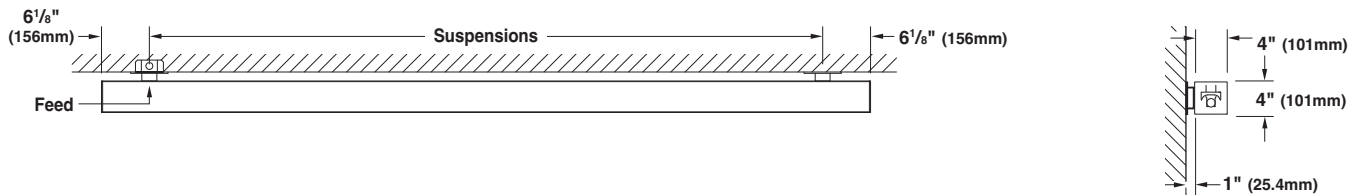
Typical Surface Mount Side View (Fixture supplied with 7/8 knockout located 2 3/16" from end in top of fixture.)



Typical Pendant Mount - Side View



Typical Wall Mount - Side View



	1T5 / 1T5HO			T8 (1 lamp)		
	Including Endplates	Pendant Suspensions	Wall Suspensions	Including Endplates	Pendant Suspensions	Wall Suspensions
4 foot individual	46.81" (1189mm)	40.46" (1027mm)	34.46" (875mm)	48.37" (1229mm)	42.08" (1069mm)	36.08" (916mm)
8 foot individual	93.21" (2368mm)	86.88" (2206mm)	80.87" (2054mm)	96.41" (2449mm)	90.12" (2289mm)	84.12" (2137mm)
12 foot individual	139.65 (3547mm)	133.28" (3385mm)	127.29" (3233mm)	144.45" (3669mm)	138.16" (3509mm)	132.16" (3357mm)

For other lengths, lampping, continuous runs or configurations please specify overall length (in feet), accessories desired and sketch/drawing of configuration. Selux will detail project drawings upon order and supply submittal drawings for approval. Individual fixtures cannot be field joined. If you have any questions please contact Selux customer service or applications engineering for assistance (1-800-SELUX-CS).